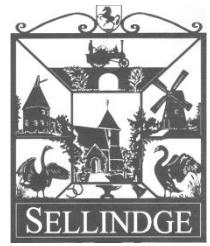


SELLINDGE VILLAGE NEWS

JANUARY 2015

Edition 609



SELLINDGE VILLAGE HALL TABLE TOP FAIR

Saturday January 3rd 2015 from 9am to 1pm. Tables can be booked in advance for £5.00 per table. Please phone 01303 813 475 or on the day, if any left at £10. Next Table Top Fair Saturday February 7th.

NEW DISABLED RAMP OPENED AT THE VILLAGE HALL



A new Disabled Ramp has been installed at the Main Hall entrance at the Village Hall, it was opened on Tuesday December 23rd, by our KCC Councillor, Susan Carey. The cost of the new ramp was funded, partly by a grant from Susan Carey and from other anomalous donations.

HEADSHAVE – IN AID OF THE PILGRIMS HOSPICE & CANCER RESEARCH

A BIG thank you, to all who supported me on the occasion of my sponsored head shave in aid of The Pilgrims Hospice & Cancer Research, at the recent Church Christmas Fair. A sum of £817 has been raised for the two Charities. Special thanks to Melanie Martin who availed herself for the job in-hand. Thank you Nic Wood

VILLAGE HALL and PARISH COUNCIL OFFICE BREAK – IN

Some of you may have heard about the break – in at the Village Hall and Parish Council Office. Nothing was stolen from the Village Hall, except two fire extinguishers, which were later recovered elsewhere in the Village, but a lot of damage was done by the perpetrators trying to get into various storage rooms and cupboards. Also three fire extinguishers were activated which caused a considerable amount of mess, to clear up, and incurred costs to have them refilled, which is quite expensive.

The Parish Council Office door and frame were seriously damaged, also the window in the porch was broken, the Parish Council Laptop, which is security marked, and all the data was backed up elsewhere, and a small amount of cash was stolen. The Police attended the scene and CSI found forensic evidence, the Police are investigating. After the holidays a claim will be submitted to the Parish Council Insurance.

Your Parish Councillors ask that if you are aware of any unusual activity in the early hours of Saturday December 20th around 3am, please contact the Police on 101 with Crime number 24 – 41298 / 14 Thank You.

age UK FOLKESTONE 01303 279 621
 Services - Meals at home or at the Social Centre - Handyman
 Chiropody - Hairdressing - Beauty and Reflexology
 Computer Lessons - Information and Advice
 Art Groups - Seated Exercise - Singing - Quizzes - Board Games
www.ageuk.org.uk/folkestone

THE BLACK HORSE
 FIDDLING LANE
 MONKS HORTON
 TN25 6AP



the
Black Horse

WEDNESDAY LUNCH
 2 COURSES £8.50

TO BOOK AND FOR MORE INFORMATION
 PHONE 01303 812 182

Little Learners www.little-learners-pre-school.co.uk
 at Sellidage Pre-School, Breakfast
 and After School Clubs
 Children aged 2-11 from Sellidage and surrounding areas welcome
 For more information
 Tel 01303 814 968 (Eve) 01959 640 035

C T FENCING
 ALL TYPES OF DOMESTIC FENCING
 SUPPLIED AND ERECTED
 FREE ESTIMATES
 TEL CHRIS: 01303 812274
 07719072855

Hallett & Co
 SOLICITORS
 11 Bank Street, Ashford, Kent TN23 1DA
 Telephone 01233 625711 Fax 01233 643841

- * House Sales and Purchases
- * Tax & Trusts
- * Wills & Probate
- * Company and Commercial
- * Personal Injury
- * Landlord & Tenant
- * Employment
- * Agricultural

Slimming WORLD
 Join a warm and friendly group near you
 Tuesdays - Lymping - 5.30pm and 7.30pm
 C of E Primary School
 Wednesdays - Hythe - 9.30am
 Hythe Pavilion (opposite swimming pool)
 because you're amazing
 Phone Kirsty on 07980 940 368 www.slimmingworld.com

DIAL-A-PLUMBER
 Plumbing, Heating & Drain Service
 - No Callout Charge - 24/7 Response - Great Value Service
 Recommended by Corgi and some of
 the UK's largest Insurance Companies
 We cover all areas of Kent
 Tel: 01223 812277 / 01223 812277

JM BOOKKEEPING/ ADMINISTRATION SERVICES
 Are you good at the work you do but hate the paperwork and figures.
 I have the knowledge and technology to take care of that side of
 your business. I can organise your paperwork, invoicing, accounts,
 payrolls and vat returns while you get on with your trade.
 This can be done at your premises or mine. References are available.
 Tel: June on 01303 812077 OR 07885 598089

Montgomery Veterinary Clinic
 AT THE EYEGATE CENTRE
 SMEETH, ASHFORD
 "We treat your pet as if it was our own"
 Specialising in all pet animals including exotics
 & avian. Calm and friendly family run clinic.
 Open 7 days a week
 Full emergency service
 Ample Parking
CALL 01303 813756
www.montgomeryvet.co.uk

Sarah's Spray Tanning Mobile Spray Tanning to your Door
 £15 per Spray Tan
 All done in the comfort and privacy of your own home
 Ideal for Hen Parties, Pre - Wedding, Top Up Tans
 Call Sarah on 07972 463 095 to book

MOBILE HAIRDRESSER
 CUTS BOTH WAY
 CUTS FROM £8. COLOUR FROM £33.
 PERMS AVAILABLE.....NVQ 1 & 2 18 YRS EXP
 CALL JULIE 07840042568

come along & TRY... nordic WALKING
 The workout that tones the whole body!
 • Burns 40% more calories than ordinary walking
 • Increases your energy levels
 • Tones up and lose weight
 • Easy on the knees and joints
 • Suitable for all levels
 • Great for neck, shoulder and back problems
 • Suitable, safe outdoor exercise
 Call for more details on
 Classes in Smeth, Aldington & Lymping **01303 814403**
www.nordicwalkingeastkent.co.uk

Wilco Plumbing & Heating
 Central Heating Installations & Repairs
 Gas & Oil Boiler repairs & replacements
 LPG, Solar & Unvented hot water specialist
 Landlords Gas safety inspections - Local Experienced Engineer
 Emergency plumbing - 24/7 call out
 Reg Institute of Plumbing - Reg Gas Safe - Reg OFTEC
 KCC Trading Standards Approved
 01303 862 173 - 07860 452 640 - www.wilcoplumbing.co.uk

age UK LYMPING 01303 862 364
 Services - Lunches, Assisted Bathing, Laundry, Hearing Aid Support
 Hairdressing, Information and Advice, Transport to and from Centre
 Activities - Arts & Crafts, Health & Wellbeing, Social History,
 Seated Exercises, Lip Reading Classes
 Jubilee Day Centre, Everist Court, Station Road, Lymping
 Website www.agecentrallymping.co.uk

Full Wound Has your watch stopped working?
 Is your watch losing time?
 We specialise in watches over 20 years old. All makes
 and models can be serviced and repaired using original parts.
 For your watch and jewellery repairs:
 Call: 01303 211500 Or visit: www.fullywound.co.uk

Your Parish Council met in December, fortunately the Agenda was not very big.

Although we had offered any residents attending to stay and enjoy a glass of sherry, and a sausage roll or mince pie, only one member of the public attended.

The December meeting was a week later than usual, as the Airport Café retrospective planning application was to be debated at the Shepway Development Control Committee meeting, and the Parish Council was going to be present, however this application was withdrawn from the Agenda and will be debated in the near future.

Potholes – An update on the various potholes was reported, and KCC Highways have agreed they need to take a look at Stone Hill, and there may be a chance that this will be repaired (properly) in the next financial year, but Stone Hill would need to be closed to allow the work to precede.

Neighbourhood Plan – The Neighbourhood Plan Group did meet, however, things have slowed, due to our advisor having to care for his wife and family, due to his wife's illness. It had been hoped that the Working Group would have been able to distribute the questionnaire in early January, but this has had to be put back. (See separate special Neighbourhood Plan Newssheet for details.)

Correspondence – The item marked correspondence contained a couple of interesting letters.

The first one from Shepway District Council are considering setting up a District wide 'Parish Charter'. It will lay down guidelines for the interaction between the District Council and the Parish Councils in the district and to acknowledge the important rolls that both levels of Government contribute to local well-being.

The second letter was from Channel 4 TV, it is asking for people with property, which wish to improve to contact them. The owner needs their own budget, but an experienced Architect and the famous property expert George Clark will come along and give advice completely free of charge. Filming is due to commence in February 2015 for more information telephone 0207 907 0878 or e-mail ruby.coote@betty.co.uk.

Speedwatch – It has come to the Parish Councils notice, that some residents feel that Speedwatch is a waste of time and money. Therefore to set the record straight.

- The Speedwatch equipment is shared with Lympne, was purchased with the contribution from our KCC Councillor Susan Carey, the actual cost to Sellindge was only around £500.
- Each Parish Council takes turn to use the equipment, on a three week turn around.
- No drivers are fined by the Parish Council, if they are going over the speed limit, their registration number is logged and sent to the Police to deal with them as they see fit and according to Highway Regulations.
- The people who manage the equipment and stand alongside when it is deployed are all volunteers, they give up some of the time for the benefit of the Parish.
- Since Speedwatch began, there has been a noticeable reduction in the speed of traffic. This is borne out by the number of speeding cars being logged, being lower. Some drivers are seen to slow down when they notice the equipment on the side of the road.

If you require any further information do contact the Parish Council Office, if no one is available leave your contact details and a message, and we will get back in touch with you.

Winter – Now that we are officially in Winter, do take care while walking and driving when the roads and pavements are damp and slippery. The Salt / Grit bins around the Village are for use to spread on roads and pavements only. The Parish Council ask residents not to take the Salt / Grit for use on your own private paths and drives.

If you need help clearing ice and snow, the Parish Council may be able to help. So get in touch.

Elections – In May this year, there is the General Election, also the Shepway District Election and also the Parish Council Election taking place. If you are interested in possibly becoming a Parish Councillor or would like information on the role, then please contact the Parish Council Clerk.

The New Year will have started by the time you get this Newsletter, so the Parish Council hope you had an enjoyable Christmas and wish you a Happy and Prosperous New Year.

The first Parish Council meeting of the New Year, is on January 13th 2015, in the Durling Hall at 7.30pm

SDC CLLR MRS JENNY HOLLINGSBEE 812 066 / Mob 07887 918 458 / jenny.hollingsbee@shepway.gov

As well as attending a conference and seminar on Community Engagement over the last month, I had the opportunity to visit the European Parliament in Strasbourg, at the invitation of Daniel Hannan MEP. This was a very interesting experience and it was good to hear very different views on our position in Europe, and I very much hope that, as a Country, we can have a referendum on this very important issue. I was also able to ask questions on immigration and a range of other subjects. On a more local matter, there is currently a campaign to reduce medicine waste across Kent and Medway. In the South Kent Coast area alone it is estimated that approximately £1 million per year is wasted on medication that is collected but never used. Even a small impact on behaviour could have a significant impact on cutting down on wastage – so perhaps a New Year Resolution could be to make sure that only medicine that we use is ordered, thereby ensuring that none is wasted.

Lastly, the children at the Primary School performed extremely well in their Christmas Nativity – well done to all the children and staff.

May I wish you all a Happy New Year.

DOG POOP BAGS – PLEASE DO NOT USE CARRIER BAGS

Dog walkers don't forget you can pick up Dog Poop Bags FREE OF CHARGE from the Parish Council Office, they come in packs of 50. Once used, and tied they can be disposed of in any COUNCIL OWNED LITTER BIN.

FROM YOUR KCC COUNCILLOR Susan Carey, Member for Elham Valley, KCC – 01303 670 561

Last winter we had no snow at all in Kent but in case we do, I'd like to share some advice about clearing snow and ice. The best way to clear snow is to remove it with a scraper or shovel and stiff broom whilst it is still soft. Salt can help remove ice by lower its freezing point so it melts. You don't need the special stuff sold for ice clearance, but it is usually the cheapest option and often comes mixed with sand or grit which helps make surfaces less slippery. You can use table salt or dishwasher salt if that's all you have to hand. Remember that salt will damage plants so be careful to keep it to paths and steps and avoid trees, grass and flower beds.

Kent County Council has provided around 2,000 roadside salt bins and these are topped up throughout the winter.

The salt from these is for use on the public highway and pavements only and taking any for use on private roads, drives and paths is not only theft but also puts lives at risk as the salt bins are usually placed near known problem spots which need extra salting. The salt and grit need the weight of passing traffic to become effective, this is why even if a road has been gritted it can still be snow covered if the snow has fallen at a time of light traffic.

KCC gritters are sent out when temperatures are expected to fall below freezing and you can see which roads are regularly done on www.kent.gov.uk/winter. For up-to-date information about when the gritters are out salting the roads, follow KCC on Facebook @grittingkent, or Kent's 'Gritter Twitter' at www.twitter.com/GrittingKent.

Kent County Council has more than 23,000 tonnes of salt at eight depots throughout Kent. One gritter can hold up to seven tonnes of salt. The vehicles used for salting and ploughing are fitted with sensors at the back, so they can make sure the job is being done properly as they go. Gritters are weighed before and after each run, to measure how much salt has been used so stocks can be managed properly. There's also a network of farmers who are issued with snow plough attachments for their tractors so they can also keep the roads clear.

Government advice for public spirited individuals who want to help clear snow from public pavements and roads is at www.gov.uk/clear-snow-road-path-cycleway

It says,

“When you clear snow and ice:

- Do it early in the day – it's easier to move fresh, loose snow.
- Don't use water – it might refreeze and turn to black ice.
- Use salt if possible – it will melt the ice or snow and stop it from refreezing overnight.
- You can use ash and sand if you don't have enough salt – it will provide grip underfoot.
- Pay extra attention when clearing steps and steep pathways – using more salt may help.’

Susan Carey, Member, Elham Valley, Kent County Council

NEW YOUTH CLUB AT THE SPORTS AND SOCIAL CLUB

'Stepahead Support' have been commissioned by Kent County Council to deliver a Rural Youth Service.

We have set up a youth club, The Sellindge Youth Klub, at the Sellindge Sports & Social Club every Thursday from 18:00 - 20:30 and we are open to all young people between the ages of 11 - 25 years old.

Entry is free of charge and refreshments will be provided. Stepahead Support Youth workers are DBS cleared.

Our service is designed to provide a place of purpose for young people to engage in various activities including informal education following the AQA Unit Award Scheme guidance. We will be offering national accredited awards in various subjects to recognise young people's contribution and achievements. Most of which may not be available through formal mainstream education.

Our focus is to engage young people in sport, music, art, life skills, law, ICT, discussion groups and much more depending on their interests and aspirations.

We are also here to serve the community and we would welcome volunteers to support us. Stepahead Support will make the necessary provisions with DBS checks and provide the appropriate training. You can keep up to date with all our services on our website @ www.stepaheadsupport.org.uk and on Facebook. If anyone has any questions about the youth club, they can contact Susan Amos on 01795 597 432 or e-mail: samos@stepaheadsupport.org.uk

WEATHER FACTS FOR NOVEMBER 2014

Minimum temp. – 1.50°C Thur.6th.

Mean night temp. 7.12°C

Maximum temp. 18.00°C Sat 1st..

Mean day temp. 12.07°C

November continued with the same weather pattern as the previous month. Saturday 1st was dry followed by rain and wind on the 2nd and then there was only one dry day in the next 17. Strong South-Westerly winds of 30 and low 40s mph were recorded in this period. With the direction of the wind and cloud at night temperatures remained over 3°C above average both by day and night with only two minor frosts recorded.

The month's rainfall was 46.49% above average with a total of 143.256mm (5.64in) from 20 days rain.

aldington osteopathy
The Surgery, Goldwell Close, Aldington,
Ardur, Kent, TN35 7TH
01233 720160
www.aldingtonosteopathy.com

- Back & neck pain
- Sports injuries
- Headaches
- Trapped nerves
- Arthritis
- Neuritis
- Shoulder pain
- Whiplash
- Ligament sprain
- Sciatica
- Knee problems
- Tension

See website for full list of services
• Pregnancy related conditions.
• Cranial therapy for babies

ATLAS ROOFING
Fag tiles, Slates, Leadwork
Modernised tiles
Over 26 years experience
City & Guilds qualified
Fully insured, free estimates

TEL 01303 814936 . MOB 07708 471869
www.atlas-roofing.co.uk

East Kent Foot Care
Mobile Foot Health Practitioner
30 Sighapier BSc (Hons), MChP, MAFH
Treating and managing common foot
problems, corns, callus, verrucas,
thickened nails, toe nail management,
fungal problems, diabetic foot
assessments etc.

Call: 07745 532075
Member of the British Association of Foot Health Professionals



J. HICKINBOTHAM
Handyman and Computer Services
Inside and Outside work undertaken. Computer problems solved.

Tel: 01303 812801
Email: hickinbotham@btinternet.net
Swan Lane, Sellindge



MANTIS MOTORCYCLING
Friendly affordable rider tuition - CBT's from £110
phone 01303 812 216 --- 07931 328 740
e-mail mantismotorcycling@btinternet.com

NICK UTTLEY BUILDER
For All Your Building Needs
Quality Work Guaranteed
Free Estimates
Tel : 01233 628999

L.W.Barratt Eng Tech MCIPHE RP
Plumbing & Heating Engineer

- All aspects of Plumbing and Heating work undertaken,
- Installations, Repairs, Detailed surveys.
- Landlord certificates.
- Established over 40 years.

01303-812593
mobile: 07889-811822
leslie.barratt@googlemail.com
www.barratts-heating.co.uk

iphe Registered
OFTEC **safe**

Telford Associates
Chartered Accountants
Accountancy, Taxation
Bookkeeping, Payroll
VAT, PAYE and CIS returns
Self-assessment tax returns
Company formations
We work with:
Individuals, Sole traders, Partnerships, Limited companies

Telford Associates Tel. 01303 813159
info@telfordassociates.com www.telfordassociates.com



MSC
microwave service company

DOMESTIC & COMMERCIAL MICROWAVE OVEN REPAIRS
LARGE SELECTION OF SPARES, ACCESSORIES,
COOKWARE AND HG CLEANING PRODUCTS

PLEASE CALL IN MAIN ROAD SELLINGDE 01303 813 530

Naturally Baby

Beautiful organic designer clothing, unique gifts and
accessories exclusively chosen for Baby
Call 01303 814048 or visit us at:
www.NaturallyBaby.com



MICK ATTWELL
LANDSCAPING

01303813587 07979881873

Fencing, Landscaping, Mini Digger Hire and Property Maintenance



Romney Heating
Plumbing & Heating

Oil Boiler Service & Maintenance
OFTEC Qualified Engineer
Emergency Breakdown

*Regular Boiler Servicing Can Help To
Reduce Your Fuel Bills*

Telephone: 01797 363990
Mobile: 07785 397086




CONDICO Plumbing

Plumber - City & Guilds qualified. Affordable,
reliable and local. All work fully insured and
guaranteed. Wide range of hot and cold water
services - see website for further details, rates
and customer feedback

Call now on 07899 834695 for a no obligation, free quote or visit
www.condicoplumbing.co.uk



SELLINDGE POP IN – A place for all age groups – Sellindge Village Hall

WINTER OPENING - The Pop – In is open on Mondays and Wednesdays from 8am to 12 Noon and Tuesdays 8am to 3.00pm, except the Tuesdays when Hi Kent are at the Pop In, that week it will be 4.00pm.

There is a vast section of books, all at 20p and most of the bric – a – brac is 50p.

You can pick up information leaflets from Age Uk and other organisations

Remember, must be the only place where you can get a hot drink for 50p and a good chat.

Tuesday 13th – Hi Kent the Kent charity for the deaf, for advice, serving hearing aids etc from 2pm to 3.30pm.

Tuesday – Suzie is in from 10.30am offering File and Polish, Mini Manicure or Classic Manicures. See Pop in details

No confirmed date for the Chiropist, so Pop – in the Pop – in for updates.

****NEW**** - Every Tuesday A lovely selection of Handmade Cards which can be made to order, from £3

Mums with children very welcome, we have a nice box of toys for the children to play with, while you have a cuppa.

Post card size adverts can be placed in the Outside Village Hall notice board for a small fee of 25p per week. To have your advert put in see Michael in the Pop – In.

SUE COVUS, KCC COMMUNITY WARDEN

sue.covus@kent.gov.uk

07773 397 14

- 1 There have been two burglaries that I am aware of, one on the Ashford Road and one in Swan Lane. Two oil theft attempts
- 2 A complaint about the amount of mud being left on the highway by farmers.
- 3 I would like to thank all that completed the KCC Community questionnaire. It has resulted in the plan to reduce numbers from 79 to 40 to be reconsidered with the results being confirmed in January.

THE COW TREE or TREE COW ----->

If you look from the Village Hall car park across the field towards the entrance to Sommerfield Court Barn, you will see an image of a cows head in the trunk of the tree, nearest the entrance. This is only visible at this time of year, once the tree comes into leaf, you cannot see the cows head image. The tree is to be retained in the Sellindge Development. So if you are down the Village Hall car park please take a look for yourself, see if you can spot the Sellindge Cow Tree.

ANGEL CENTRE – The Angel Centre will be at the Durling Hall on Wednesday January 28th with an Evening of Clairvoyance with Sue Pollard from 7.30pm until 9.30pm. For Information 01303 278 402

SELLINDGE WOMENS WEDNESDAY

LUNCHEON CLUB – The venue for January is The Dukes Head, on January 28th will members let June Wales know by Wednesday January 21st.

THE GET TOGETHER CLUB

Our December meeting we had our Christmas Party which was enjoyed by all Thank you, for all the lovely food and gifts that was brought by our members. On a sad note one of our members sadly died earlier in the

month and the Committee and members would like to send their condolences to Jean's family and friends at this sad time. She was a lovely lady who will be missed by us all. In December we also had our Christmas Dinner at the Black Horse and as usual food and service was great. Thank you to all the staff and especially Rita who went out of her way to change the time and fit us in with a full house. I hope it did not give her too much of a headache. Our next meeting is the second Wednesday, 14th January at 2pm – 4pm in the Durling Hall where we will be discussing plans for 2015. By this time it is hoped our Secretary will be on her way to a full recovery from her recent illness. New members will be welcome to join this meeting. Just come along.

SELLINDGE GARDENERS ASSOCIATION

The Gardeners had their Christmas Party on Wednesday December 17th, where members were able to bring a guest, and Judges and friends were also invited. The members all supplied a lovely spread of food. They had a hilarious game of Beatle, as some had not played before. There was competitions round the room.

They were entertained while enjoying the spread of food, by Betty, with an interpretation of Jingle Bells. The evening was rounded off with a good Christmas Raffle.

The next meeting is on Wednesday January 21st in the Durling Hall 7pm for 7.30pm. Visitors most welcome.



SELLINDGE CHRISTIANS TOGETHER

Christmas has come and gone and we are into a New Year. If we had a crystal ball, we may be able to see what is in front of us. You may not wish to know this. But, let's Look forward and hopefully to a good 2015. Look around and see what you can do for someone else. A visit to someone who is lonely or sick, doing small jobs for them in the house or garden. These are only small tasks but they mean so much to someone who is on their own. Just a smile and our joy shown to our fellow beings make so much difference. Make your resolution for the year, to try to help or bring love and joy into someone life.

Again if you think that the Church can help please contact me 01303 812484

Mike Crisp

JANUARY SERVICES AT YOUR VILLAGE CHURCH

Sunday 11 th	Holy Communion	9:30am
Sunday 18 th	Holy Communion	8:00am
Sunday 25 th	Holy Communion	11:00am

SELLINDGE CHURCHES - From, The Rectory, Smeeth

Dear Friends

Last month in the weeks leading up to Christmas we thought quite a lot about the person and work of John the Baptist. He is not usually a person we associate with the Christmas story. He does not appear in Nativity plays or on Christmas cards, perhaps because he was only six months old when Jesus was born. His own birth is marked in the Church on 24th June, but not many people mark this event with presents or cards.

His particular role came some thirty years after Jesus birth to proclaim his coming as the Son of God at work amongst the people of his day. He urged people to look both forwards and backwards. Forward to all that God would and could do in this significant moment in history and backwards to all that had been said and written down about the coming of God by people centuries earlier. He also urged people to think about what God meant to them personally and to ask his forgiveness for the wrong things they had done in the past and his strength to live a better life in the future in partnership with him.

John's message is really quite appropriate to us as we begin a New Year. We can look forward to all that we have planned for the next 12 months, but at the same time look back at what the past year has brought. Some of these things may have been planned this time last year, but a lot of what has happened may have come as rather a surprise. We may have been pleased with what we have achieved, but there may also have been things that we would like to forget about or could have done better.

So at the beginning of 2015 we bring before God the year that lies before us and the year that has passed. It is a good opportunity to look at our own relationship with him and to take steps to deepen our faith and to meet all that comes our way, both expected and unexpected.

May I wish you all a happy and peaceful New Year.

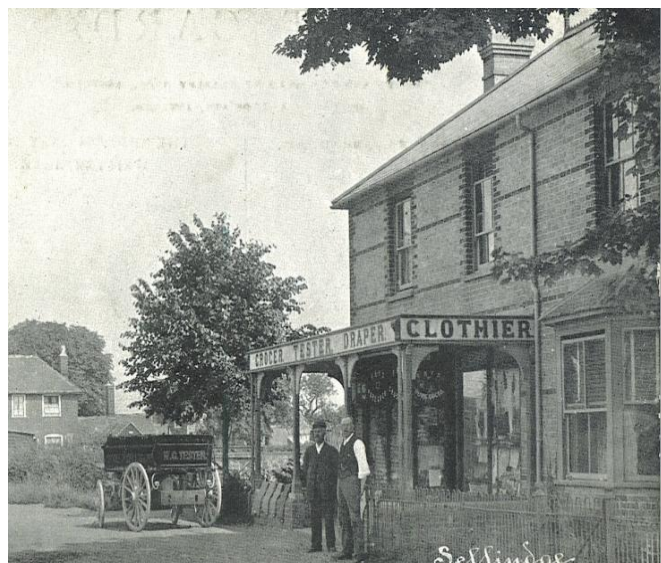
Part of the A20 Benefice comprising the parishes of

Brabourne, Mersham, Monks Horton, Sellindge, Smeeth and Stowting. www.A20churches.org.uk

Please let us know if we can help you in any way.

Richard Le Rossignol (Priest in Charge) 01303 812 697

Associate Priest : Rev Ian Campbell 01233 501 039



↑ William George Tester's shop (now the Co-Op), he was trading there from at least 1891 through to 1913, trading as a grocer, baker, draper, clothier, ironmonger, earthenware and china dealer. The Post Office in 1913 was down at Button, family grocer and general draper, which was where the Microwave shop is now and he also had the Pork butcher and baker shop, which is now the hairdressers.

CHISLETT & PEACOCK

BUILDING CONTRACTORS

All aspects of building work
Specialists in brickwork, leadwork, roofing
and listed buildings

Sellindge 813887

ROUNDWOOD HALL PAY & PLAY GOLF CLUB

Stone Street Behind the line of conifer hedges on
Lymington Stone Street (B2066) you will find a
Folkstone friendly & welcoming short golf course.
CT18 8DZ 9 holes - £10.00 18 holes - £12.00
01303 862260 47 mins at Wexham & 8/11
FRIENDLY - RELAXED - AFFORDABLE
www.roundwoodhall.co.uk

K. H. Electrical & Plumbing Services

Domestic & Industrial Re-Wiring Repairs Extra Points
Security Lighting and Alarms

Electric Showers and Immersion Heaters. Fault Finding,
Testing and Surveys. Free Estimates. Over 25 Years Experience

Ph. 01303 812622 Mobile 07974 644370
86 Swan Lane, Sellindge, Ashford



Purrs Men's

FIVE STAR BOARDING FOR CATS

MAIN ROAD, SELLINDGE

Tel: 01303 813736

M. S. AILWOOD

Building, Carpentry, Repairs and Renovations

Brenwood, Barrow Hill
Sellindge, Ashford
Kent TN25 6JR

Tel: 01303 813666

MARK TOMSETT

GARDENING SERVICES

REGULAR MAINTENANCE - ONE OFF SPRING CLEAN

COMPETITIVE RATES

07514 557 180

CONTAINERISED STORAGE

Available locally

* Fully Secure * - *Indoors or Outdoors *
* Competitive Rates * - * Convenient *

Please phone 01233 812 237 for details

DILTON

MINI SKIP HIRE

BALLAST, hardcore, SAND
TOPSOIL SUPPLIED
REGISTERED WASTE CARRIER

07799 433754

01303 812445

Bob Fisher, The Garage, Ashford Road, A.D., Sellindge, Kent TN25 6AD

TYRES

BATTERIES

EXHAUSTS

Bob Fisher's

GARAGE - SELLINDGE

01303 814131

Competitive prices on all your car needs - on your doorstep

Jig work - Accident repairs - Recovery

Mechanical repairs - Valeting

Vehicle collection arrangement for servicing

MOT testing with no re-test fee

BLINDS and CURTAINS

Made to Measure - Interior Shutters

Conservatory Blinds

Full range of Tracks and Poles

A Family Business Local to YOU

For free quotation call Fitting Creations on 01303 194 882

Visit us online at www.fittingcreations.com

Greenwood
GFencing

For all aspects of
Fencing & Garden
Structures

Phone: 01303 812551

Email: gwfencing@btinternet.com

Mobile: 07751714405

JUST STOVES

Insulation of Woodburning stove & flue lining.

Repairs to all makes of woodburning stoves.

Member of the Institute of Chimney Sweeps

Tel: 07926884214

ELECTRICAL INSTALLATION AND TESTING

JOHN ROBERTS

Domestic Electrical Installer

17th edition qualified

Tel 01233 730 863 Mob 07957 641 105

www.electricalinstallationandtesting.co.uk

WEALD SOCIETY for the DISABLED



Lovely 2 bedroomed holiday chalet available to book at

Romney Sands Greatstone

Phone - 01233 720 392

WHAT'S ON AND WHERE JANUARY 2015 *Stick it on your fridge or pin board*

WEEKLY EVENTS

- MONDAY** PILATES – 9.15am – 10.15am – Village Hall (Main) - 07543 543 373 vsaker@hotmail.com
PILATES – 10.15am – 11.15am – Village Hall (Main) -07543 543 373 vsaker@hotmail.com
QIGONG – 11.15am – 12.15pm Village Hall (Main) - - 07543 543 373 vsaker@hotmail.com
RAINBOWS – 4.00pm – 5.00pm Village Hall (Main) - - 812 297 (Term time)
BROWNIES -- 5.15 - 6.45pm Village Hall (Main) - - 812 297 (Term time)
GIRL GUIDES - - 5.45 – 7.15pm Village Hall (Durling) - - 07801 572 300 (Term time)
BOKWA - - 7.30pm Sellindge Sports & Social Clubhouse Swan lane. - -
LINE DANCING – Beginners 7.30pm – 9.30pm Village Hall (Main) – 07753 274 913
- TUESDAY** SELLINDGE BABY & TODDLER GROUP – 9.15am – 11.30am V Hall (Main) – 01303 812 262
NHS EAST KENT HEALTHWALKS – 10.15am Village hall car park – 01304 828 731
LINE DANCING – 1pm to 2.45pm Village Hall (Main) – 01303 813 098
LEGS, BUMS & TUMS - - 6.00pm Sellindge Sports & Social Clubhouse - - 07843 099 912
YOUTH CLUB – 6.30pm Sellindge Sports & Social Clubhouse, Swan lane.
LINE DANCING -- Intermediate Level 7.30 - 9.30pm Village Hall (Main) - - 01303 813 161
WHIST DRIVE -- 7.30 pm Sellindge Sports & Social Clubhouse, Swan lane. - - 814 511
- WEDNESDY** ART GROUP – PAINTING for ALL – 2.00pm – 4.00pm Village Hall (Durling) – 01303 812 593
BEES BODS (Dance exercise) – 5.45pm – 6.45pm Village Hall (Main) - - 01303 813 274
STREET DANCE – 4.45pm – Sellindge Sports & Social Clubhouse, info@dancevisions.co.uk (tt)
ZUMBA – 6.00pm – Sellindge Sports & Social Clubhouse, Swan lane. - - 07921 661 548
TAEKWONDO -- 6.30pm at Sellindge Primary School - - 814 635
AEROBIC BODY BLAST -- 7.00 - 8.00pm Village Hall (Main) - - 01233 820 109
TAI CHI FOR YOU - - 8.00pm – 9.00pm Village Hall (Main) -
- THURSDAY** LINE DANCING – Beginners 12 Noon to 1.00pm Village Hall (Main) – 01303 813 098
LINE DANCING – Easy Intermediate 1.00pm to 2.45pm Village Hall (Main) – 01303 813 161
LINE DANCING -- Intermediate 7.30pm – 9.30pm Village Hall (Main) – 01303 813 161
BINGO -- 7.30pm at Sellindge Sports & Social Clubhouse, Swan Lane. phone 812 437
YOUTH CLUB - - 6pm – 8.30pm at Sellindge Sports & Social Clubhouse, Swan Lane. ****NEW****
- FRIDAY** ART GROUP – PAINTING for ALL – 9.30am – 11.30am Village Hall (Durling) – 01303 812 593
CUBS -- 6 - 7.30pm BEAVERS -- 6.30-7.30pm SCOUTS -- 7.30-9.00pm Village Halls - -813 250
- MON / TUES / WED – SELLINDGE POP IN – DURLING HALL – Mon/Wed 8.00am - 12**
Tues 8.00am - 4.00pm – 813 475

*****MONTHLY*****

- RELAXATION & WELLBEING CLINIC – Thursday 8th – 10am – 12 Noon - Village Hall (Durling) - 0794 1072 489
BABY CLINIC on Monday 12th 2.00pm - 4.00pm at the Sellindge Surgery Appointment only - - 812 616
IMPERIAL DOLLS HOUSE CLUB on Tuesday 13th at 7.00pm Village Hall (Committee Room) - - 840 214
PARISH COUNCIL on Tuesday 13th at 7.30pm Village Hall (Durling) - - Chair 07710 260 757 Clerk 01233 720 392
GET TOGETHER CLUB on Wednesday 14th from 2.00pm – 4.00pm Village Hall (Durling) - - 813 454
GARDENERS' ASSOCIATION on Wednesday 21st 7.30pm Village Hall (Durling) – 813 288 or 01843 597 710
SELLINDGE SEQUENCE DANCING on Saturday 24th at 8.00pm – Village Hall (Main) – 01233 629 815
BABY CLINIC on Monday 26th 2.00pm - 4.00pm at the Sellindge Surgery Walk In Clinic - - 812 616

SATURDAY 3rd – TABLE TOP FAIR – VILLAGE HALL – 9am – 1pm


=====

SOCIAL FOOTBALL TENNIS THE SELLINDGE SPORTS AND SOCIAL CLUB BOWLS POOL DARTS CRICKET

Opening hours Tues to Fri 5.00pm to 10.30pm – Sat 12 Noon to 11pm – Sun 12 Noon to 7.00pm

Contact Social Club on 812 437 www.sellindgeclub.co.uk

SELLINDGE INFORMATION PAGE JANUARY 2015

SELLINDGE PARISH COUNCIL www.sellindgepc.kentparishes.gov.uk  @ParishSellindge 01303 813 271
Sellindge PC Office, Sellindge Village Hall, Sellindge, Kent – TN25 6JY sellindge-parishcouncil@btconnect.com

The Parish Councillors

Elected May 2011 – Stanley Bull (Chairman) of Swan Lane, Nigel Fursdon of Meadow Grove,
Colin Minister of Greenfields, Ms Sarah – Jane Sandy of Moorstock, Alan Keeves of Lourdes Manor Close
Elected June 2013 – Mrs Pat Vago of Stone Hill, Chris Mason of Swan Lane, Carlton Chislett of Barrow Hill
Co – Opted November 2013 – Miss M Varrier – Smith of Greenfields

Clerk and RFO to the Parish Council Linda Hedley - - - - - Clerk to the Burial Ground Linda Hedley

The Parish Council Office is located in the grounds of the Village Hall (behind) and is open to the public on Tuesday's and Friday's – Tuesday 9.00am – 11.30am Friday 3pm to 5.30pm

SHEPWAY (North Downs West Ward) District Councillor – Mrs Jennifer Hollingsbee 01303 812 066

KENT COUNTY COUNCIL (Elham Valley Ward) Councillor – Mrs Susan Carey – 01303 670 561

SHEPWAY DISTRICT COUNCIL – 01303 853 000 (main switchboard) www.shepway.gov.uk

KENT COUNTY COUNCIL – 03000 41 41 41 (helpline) www.kent.gov.uk e-mail county.hall@kent.gov.uk

KENT COUNTY COUNCIL HIGHWAYS – 03000 41 81 81

SELLINDGE RESIDENTS ASSOCIATION – www.slurry.org.uk – sellindgeresidents@gmail.com

POLICE PCSO Samantha Hunt mob – 07980 236 331 Emergency 999 – non emergency 101

ALL EMERGENCY SERVICES – POLICE – FIRE & RESUE – AMBULANCE – 999



POLICE CONTACT – MONDAYS JANUARY 5th and 19th from 5.00pm to 6.00pm

In the Village Hall car park, come and meet the local Police, you can discuss your concerns or just get advice.

KCC COMMUNITY WARDEN Sue Covus – 07773 397 141 – sue.covus@kent.gov.uk

DOCTORS SURGERY – 812 180 website www.sellindgesurgery.nhs.uk Out of hours phone 111

Minor Injuries *small wounds, burns* – Hamstreet (8am – 6pm) 08444 773 989 Wye (8.30am – 6pm) 08444 878 419

Patient Participation Group – Vera Orsbourne – 812 237

Dental emergency – (No Dentist) – 0808 238 9797 – evenings and weekends – 01634 890 300

Late night pharmacy – Boots (Sevington) – 01233 503 670

HOSPITALS – William Harvey (Ashford) 01233 633 331 - - - - - Royal Victoria (Folkestone) 01303 850 202

Kent and Canterbury (Canterbury) 01227 766 877 All hospitals website www.ekhuft.nhs.uk

SELLINDGE PRIMARY SCHOOL – 01303 812 073 website www.sellindge-ashford.kent.sch.uk

LITTLE LEARNERS AT SELLINDGE PRE-SCHOOL MON – FRI 8am - 6pm Sellindge School 814 968

KCC MOBILE LIBRARY All times approx. *JANUARY* www.kent.gov.uk/leisure_and_culture/libraries.aspx

Mondays – 10.20am to 10.50 am A20 Hythe lay – by near Swan Lane, 10.55am – 11.25am Greenfields lay – by.

Wednesday's 7th and 21st – 12 10am – 12.30pm Coopers Lane / Stone Hill junction,
12.35pm – 12.50pm Lay by top Barrow Hill and 2.50pm – 3.10pm Lay by at the St Mary's Church

AGE UK HYTHE & LYMINGE – 01303 269 602 www.ageuk.org.uk/hytheandlyminge

AGE UK FOLKESTONE – 01303 279 621 www.ageuk.org.uk/folkestone

CITIZENS ADVICE BEARU – Folkestone 01303 249 310 (10am – Noon Tues – Fri) www.shepwaycab.co.uk
Ashford 01233 626 185 (9.30am – 4.30pm Mon – Tues & Thurs)(1pm Wed & Fri)

THE SAMARTITANS – Folkestone 01303 255 000 Ashford 01233 610 000


UTILITY EMERGENCY

POWER CUT – 0800 783 8866 or text 'power' and your 'postcode' to 80876 www.ukpowernetworks.co.uk


Please note that in a power cut telephones that have an electric basestation will not work, it is a good idea to have at least one conventional phone, that just plugs into the phone socket, these are not normally affected.

WATER – www.affinitywater.co.uk emergency 0845 888 5 888 Mon – Fri 8am – 6pm Sat 8am – 1pm

SEWAGE – www.southernwater.co.uk emergency 0845 278 0845

SELLINDGE VILLAGE HALL  Anybody wishing to book the Village Hall ring 01303 813 250 any day except Sunday and preferably no later than 8.30pm. Bookings **MUST** be confirmed in writing as soon as possible.

We now have an e-mail address. sellindgevillagehall@gmail.com

SELLINDGE SPORTS & SOCIAL CLUB  Anyone wishing to book the clubhouse or pitches call 812 437 from 5pm Tuesday to Sunday or e-mail club@sellindgeclub.co.uk Fully licensed bar, catering available.

ITEMS FOR THE FEBRUARY 2015 NEWSHEET Should be delivered to the Parish Council Office or e-mail nnwfursdon@aol.com by 2200 hours (10pm) on **TUESDAY 20th JANUARY 2015** with a 'contact' name, address and / or tel number (not for publication) phone 07788 313 414 and I will collect