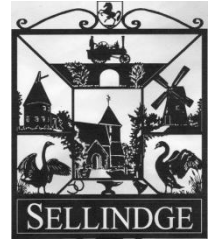


SELLINDGE VILLAGE NEWS

NOVEMBER 2016

Edition 631



SELLINDGE VILLAGE HALL TABLE TOP FAIR

Registered Charity 302833

Saturday November 5th 2016 from 9am to 1pm. Tables can be booked in advance for £5.00 per table.

Please phone 01303 813 475 or on the day, if any left at £10.

Please note that the Next Table Top Fair Saturday December 10th 2016. *A week later than normal*



A SAD FAREWELL FROM BOB FISHER

'It is with a heavy heart, that after 26 years of trading as Bob Fisher's Garage, we have decided to sell up due to my on-going back problems. The garage has been a big part of our lives and we have enjoyed our time here and being part of the village community.

The good news is the garage has been sold and will continue trading as it is; workshop, servicing, M.O.T. and car sales under the new owner, Daniel Peattie. He will also be keeping our staff, alongside his own. Daniel has spent his working life in the motor industry, having originally trained as a motor technician in a Police workshop.

We will still be around for a little while to help Dan with the transition. Sandra and I would like to thank all the staff and customers for their support over the years and hope you will carry on using the garage. We wish you and Dan all the best for the future''.

We wish Bob and Sandra all the best for the future.



St. MARY's CHURCH CHRISTMAS FAIR

Join us for St. Mary's Christmas Fair on Saturday 12th November 10am - 2pm at Sellindge Village Hall.

Come and have lunch with Father Christmas from 12pm onwards. £3.50 per child including a packed lunch and a small gift. Book early to avoid disappointment. Enjoy a home cooked hot lunch, browse the craft, cake and festive stalls and try your luck at the raffle.

1st Sellindge Rainbows, Brownies and Guides will be entertaining us with festive songs and campfire favorites. For more information visit www.facebook.com/stmaryssellindge



SELLINDGE VILLAGE BONFIRE GRAND FIREWORK DISPLAY!

Saturday November 5th
at the sports and social club, Swan Lane
Gates Open 5.30pm Fireworks 7pm
Family ticket £10 (2 adults 2 Children), Adults £4,
Children £2 (under 3's free)
Licensed bar and BBQ



The Parish Council met on October 18th, the agenda did seem a particularly busy one for October, however the meeting was concluded by 9.15pm so not too late!

Planning issues – Shepway District Council has started their consultation on Places and Policies, this is how Shepway look at finding land for development in the years to come. If you have a computer then it is easy to find the document, alternately you could visit the office when it is open and I can log on and you will be able to see it on line. If you have any comments your Council would be pleased to hear from you.

Taylor Wimpey Site – They are still in negotiations with the land owners as to the purchase price. As the Clerk I speak to the Senior Planner at Taylor Wimpey, from time to time to obtain updates, and it has been agreed that unless things change considerably we will speak to one another just before Christmas.

Planning applications in Sellindge – Two applications were considered by your Council one in Gibbons Brook the other in Greenfields, and both were supported, although extra comments were noted.

Asian Tiger Mosquito – Jenny Hollingsbee was able to give everyone piece of mind of the finding of the Asian Tiger Mosquito, I was surprised that monitoring of motorway services takes place and has done for years now. At least anything ‘nasty’ will be found quickly.

Trees in the burial grounds – It is hoped that work will start soon on removing some of the trees in both burial grounds. Other trees need to be ‘crown lifted’, this is where the lower branches are removed to prevent damage to the tree in future years. The work was first agreed around 2009 and a small amount has been done, but now having been awarded the £10,000 from Tesco Bags of Help the work can now be completed.

Correspondence

KALC Community Awards – One of the items included information about KALC Community Awards in 2017. Nominations are invited from Parish and Town Councils and Parish Meetings for people living or working within their Parish boundary, also groups are considered as well. The Councils make their own decisions about how they want to identify those who have made a significant contribution to the local community and there is no pre-determined criteria for what the contribution to the community might be. The winners will receive a certificate signed by the KALC Chairman and the High Sheriff of Kent.

Your Parish Council decided that residents in Sellindge should be asked for Nominations.

All you need to do is send the name of the person or group who you feel should be recognised, with an explanation in no more than 30 words, to the Parish Council office. The deadline for the Parish Council to submit nominations is 27th January 2017. The person or group with the most nominations will be presented with their certificate at the Annual Parish Assembly in 2017.

Wheelie Bins – It has been reported that some residents around the village are leaving their bins at the front of their property on the pavements. Please can you make sure that once emptied they are taken back into the boundary of your own property. This will keep the village looking tidy, but more importantly ensure that no one is injured in any way.

Gun Amnesty – Being a rural area some people (mostly farmers) apply for licenses for shot guns for hunting.

The Police are having a Gun Amnesty between Monday October 31st and Friday November 11th.

Please note that should you have any fire arms and you do not have a license to hold a gun or rifle then these can be handed in to the police stations at Ashford and Folkestone, with no questions asked.

New Parish Councillor - As the Clerk, I am delighted to welcome Mr Phil Cogan who was co-opted as a Parish Councillor at the October Parish Council meeting.

The next meeting of Your Council is on November 8th, at 7.30pm in the Durling Hall. So do come along.

KENT POLICE – Have fun but stay safe this Bonfire Night

Most people lock up when going out to a firework display – but what if you’re watching fireworks from the garden?

For our top tips to keep your home and belongings safe, visit www.kent.police.uk/burglary

Make sure your loved ones and pets stay safe too. For everything you need about firework safety, visit ROSPA (the Royal Society for the Prevention of Accidents) at www.saferfireworks.com

Protecting and serving the people of Kent

WEATHER FACTS FOR SEPTEMBER 2016

Minimum temp. 7.00°C Mon.26 th .	Mean night temp. 13.30°C
Maximum temp. 31.25°C Tues.13 th .	Mean day temp. 22.06°C

September was another month of mixed weather. Rainfall was just above average but sunshine was also up by just over 24 hours. Rain was recorded on 12 days with most of it being small amounts which was over night. The wettest days were Fri.16th with 17.272mm (0.68in) and Sat.17th with 10.16mm (0.4in). The total rainfall for the month was 47.498mm (1.87in). Tues.13th was the hottest Sept day and night temperature since 2013.

Wind through-out the month was mainly light with only 3 days in the low or mid 20’s mph.

SELLINDGE WOMENS WEDNESDAY LUNCHEON CLUB

Venue for November – The Drum, Stanford on Wednesday 23rd. 12 Noon for 12.30pm.

Let June Wales know on 01303 814 676 by Wednesday 16th if you will be attending the Luncheon.

FROM YOUR SHEPWAY DISTRICT COUNCILLORS

Jenny Hollingsbee and Susan Carey, Ward Councillors for North Downs West, Shepway District Council

Jenny.hollingsbee@shepway.gov.uk 01303 812 066

susan.carey@shepway.gov.uk 01303 670 561

At the end of September we took part in a 'ward walkabout' in Sellindge with officers from Shepway to look for problems with flytipping, litter, bins etc. This is going on across the district and the worst problems tend to be in Folkestone where there is one street where a CCTV camera has been installed to try to catch flytipping. More cameras are being bought to monitor flytipping hotspots and we encourage residents to report flytipping when they see it especially if they witness it happening as Shepway will prosecute offenders. Jenny also did a site inspection of Council owned properties with Officers' from East Kent Housing and has requested that SDC remove rubbish that has accumulated in several places.

Across our ward we have attended a number of Flower Festivals, Harvest Lunches/Supper and church services. The displays of flowers and produce were wonderful and we congratulate all involved. Jenny attended the East Kent Hospitals Trust AGM and also the Citizens Advice Bureau AGM who provide an amazing service to people in our District who need help. The Bureau are actively seeking volunteers to help with an increasing workload – if anyone is able to spare an hour or so please contact sue.day@shepwaycab.co.uk Jenny would also like to draw attention, the Folkestone Quarterhouse are running a number of workshops for young people and also a variety of performances. It will also host a number of the Folkestone Book Festival Events 18-27 November www.quarterhouse.co.uk Officers from Shepway were on hand to answer questions about the 'Places and Policies' Local Plan at Sellindge Village Hall on 13th October and about 50 people attended. You can see the plan on the Shepway website and you have until 18th November to make a response. If you are not online there are paper copies at local libraries and at the Civic Centre in Folkestone. The Local Plan must show that there is enough land 'to meet objectively assessed needs for market and affordable housing'. An independent planning inspector will assess the plan and if s/he finds it 'sound' it can be adopted by the Council. It's a long process and we will keep you informed as it goes through each stage. Looking further ahead we believe the garden town proposal for Otterpool Park is a better way to provide the homes we need over the long term. We recently went on a study tour with other councillors, planning officers, drainage and traffic engineers to visit a range of housing developments in Cambridge and Hertfordshire so we could see what has worked well and what hasn't. One place that particularly interested us was Letchworth, the original garden city, where a masterplan prepared in 1905 has been delivered over many decades. It is also a very "green" city and well worth a visit. Among the new developments we saw was Alconbury where a new school has opened before any of the houses have been occupied. A debrief on this tour was given to local Parish Councils on 3rd October. The next study tour will cover sites in Kent.

We have been told that about 1,000 people visited the exhibitions that Highways England held as part of their last consultation and around 400 written responses were received (we both sent personal responses). This is a smaller number than the response to the first consultation. As we write it is unclear if a legal challenge to the project will delay it but we have been told that Highways England will still be progressing compensation plans for affected homeowners. Highways England has also agreed to meet regularly with a community forum on which Jenny will be the District Council representative and Susan the County Council representative. Jenny attended the first Governors' Meeting for this academic year at Sellindge Primary School and also the Parish Council Meeting.

We both had a briefing on Friday 14th October concerning the findings of mosquito eggs at Stop 24 in the mixed used area. Public Health England recommended that Shepway District Council follow standard practice and carry out a treatment as a precaution to prevent the mosquito establishing and local residents were informed. Public Health England has confirmed that there is no risk to people's health or their family or pets from either the presence of the eggs or the eradication. They approved the sites to be sprayed and the Council's pest control contractor carried out a spray treatment of anywhere where the mosquito eggs may have been laid on Monday 17th October during daylight hours. Public Health England will continue to monitor the site as part of its routine sampling surveillance.

SELLINDGE POP IN – A place for all age groups – Sellindge Village Hall

The Pop – In is open on Mondays and Wednesdays from 8am to 12 Noon and Tuesdays 8am to 3.00pm, except the Tuesdays when Hi Kent are at the Pop In, that week it will be 4.00pm.

There is a vast section of books, all at 20p and most of the bric – a – brac is 50p.

You can pick up information leaflets from Age UK and other organisations.

Tuesday 8th & 29th – Suzie will be in offering File and Polish, Mini Manicure or Classic Manicures.

Tuesday 8th – Hi Kent the Kent charity for the deaf, for advice, serving hearing aids etc from 2pm to 3.30pm.

Tuesday 8th – East Kent Foot Care will be at the Pop In (in the Committee Room) from 8.30am to 1.00pm the cost is £14 for general maintenance and £24 for more through work.

*** Coming Soon ** – Hair Dressing by Julie, Ladies and Gentlemen's.*

Date to confirmed – Cathy from Age UK will be at the Pop – In with lots of information for people over 50.

Mums with children very welcome, we have a nice box of toys for the children to play with, while you have a cuppa.

Post card size adverts can be placed in the Outside Village Hall notice board for a small fee of 25p per week.

To have your advert put in see Michael in the Pop – In.

FROM YOUR KCC COUNCILLOR Susan Carey, Elham Valley Ward. susan.carey@kent.gov.uk 01303 670 561
You may have started to pick up stories from other parts of the country that some Councils are no longer able to balance their books (Lancashire, Somerset and Birmingham are a few examples). The rising demand for social care is the biggest pressure that Councils face with increasing numbers of frail elderly and more demand for child protection. Kent County Council also faces these pressures but we began our savings earlier than most and over the past six years have made savings of over £500m. We've invested in new technology, better procurement, streamlined processes and shed staff. On the whole we think we've made the savings where it doesn't show but it gets harder every year. We now estimate we need to find another £153m of savings over the next three years to meet increased demand for social care and unavoidable increase to costs such as the National Living Wage, increased taxes for landfill waste, insurance and carbon emissions and the unfunded costs of Unaccompanied Asylum Seeking Children where Kent bears the brunt of the numbers arriving in the UK.

There's more information on where the money you pay in council tax is spent at www.kent.gov.uk/budget and the chance to have your say on priorities and what level of Council Tax increase we should make.

You have until 27th November to respond. (If you are not online then ring 03000 421553 for a paper copy.)

There are a couple of other consultations running which should also be of interest. The Boundary Commission is asking for views on its proposals for the parliamentary constituencies from 2018. Across the country the aim is for each constituency to have roughly the same number of electors (between 71,000 and 78,000) and the number of MPs will reduce from 650 to 600. The proposal for the Folkestone & Hythe constituency sees the area called Saxon Shore move to Ashford (where it was originally) and the rest of the seat stays the same. This has the advantage that the District Council boundary will be the same as the constituency.

You can see the proposals on www.bce2018.org.uk and you have until 5th December to respond to the consultation.

There's also an opportunity to make representations in person to the Boundary Review's Assistant Commissioners as part of a national tour when they come to County Hall in Maidstone on 3rd and 4th November.

The Boundary Commission point out that it is usually the people dissatisfied with the proposals who respond to a consultation and sometimes changes made to accommodate these objections are unwelcome. So do please look at the proposals and say if you are happy with them or not.

Finally, Matthew Scott, the Police and Crime Commissioner, is consulting on priorities for Kent Police at www.kent-pcc.gov.uk/take-part (or ring 01622 677055 for a printed form). You have until 2nd December to respond. I shall be asking for Kent Police to give a higher priority to tackling bad drivers and I hope you will too. Driver behaviour is the major cause of all road traffic casualties in Kent and we need speeding, using mobile phones whilst driving and other dangerous behaviour to be a high priority for Kent Police.

THE GET TOGETHER CLUB

We meet in the Durling Hall the 2nd Wednesday of each month from 2pm to 4 pm. New members welcome.

Come along for a cup of tea and a chat and meet the members of all ages who will welcome you.

The date for November will be Wednesday November 9th

SELLINDGE GARDENERS' ASSOCIATION

At the October meeting the Annual Sellindge Gardeners AGM was followed by The Harvest supper.

Our November meeting to be held on the Wednesday 16th at 7-15pm for 7-30pm Start.

Will be a talk by Ms Melanie Gibson-Barton on "Brugge's its more than just chocolate."

Announced at the AGM was proposed a 5 Day Trip to The Lake District In September 2017.

Which will include the following visits to the Haverthwaite Railway (A Preserved Railway), a Boat Trip on Lake Windermere, K Shoes Shopping outlet in Kendal, Beatrix Potter Experience/Museum, Holehird Gardens excursion, the Kirkstone pass and Lake District.

Anyone interested in this venture (both members & non-members) please contact Betty on 01843 597 710. ASAP.

SELLINDGE NEWS DELIVERIES (VACANCIES) –

There is a small number of Sellindge News delivery vacancies, so if you would like to do your bit for the community. Coopers Lane – This is a round of 17 copies.

CHRISTMAS CRAFT and NEW GOODS FAYRE

There will be a Christmas Craft and New Goods Fayre at Sellindge Sports and Social Club in Swan Lane on Saturday November 12th 10am to 1pm Entrance by a donation of 50p (includes free raffle ticket) to Pilgrims Hospice.



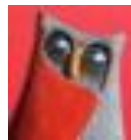
ART SHOW – at EVEGATE

There is an Art Show by local artist being held at Evegate throughout November.

The exhibition is next to the "Stringwind music repair shop. 9am till 5pm Monday to Saturday.

Paintings by Nikki Barrett

Sculptures by Robert Mowl



STELLING MINNIS ART GROUP

Art and Local Crafts Exhibition in Stelling Minnis Village Hall on 19th & 20th November, 10am till 4pm - Free Entry
Coffee, Teas, Lunches & Cakes available, Provided by Upper Harges Church, Proceeds to Breakthrough Breast Cancer

St MARY'S CHURCH SELLINDGE

Church services at St Mary's Church, Sellindge in November

Sunday 13 th	10.30am	Service of Remembrance
20 th	11am	Party Praise
27 th	11am	Parish Communion

The Rectory, Mersham

Dear Friends

'Just do it' was an often used phrase of Louisa's whom we knew in a previous Parish. Louisa was a young mum with four young daughters; she held down a high powered job in London, served on the Parochial Church Council, was a very active and valuable member of the Children's Ministry Team and had been fighting the effects of a brain tumour for several years. Louisa was an inspiration to all around her, but sadly she died a few years ago. The thing that we remember most about Louisa was that phrase of hers 'just let's do it' – very much a 'can do' approach rather than thinking up ways that stop us from moving forward. Generally I think that we spend too much time procrastinating to find a reason why we should not do something, rather than getting on and getting a job done. Bishop Steven Venner once said that 'it was acceptable to have tried and failed, but not to try was unacceptable.'

Indecision, delay, and lack of progress can lead to frustration, disappointment and even despair. I have tried to adopt a 'can do' approach to anything we do as it is so much better to try and project a positive image rather than a negative one. This, I believe, is important in our lives, in our Church and in any other organisations that we may be part of. The Parish Churches in this Benefice will be going through a challenging and exciting time over the next few months as Richard and I move on and I hope this will be seen as an opportunity for all to work with a positive 'can do' approach and that this can filter into our lives generally.

In the Letter of St Paul to the people of Corinth he says: 'Bloom Where You Are Planted' (*1 Corinthians 7:20–24*).

Wherever you live it is beholden of us to 'bloom', move forward, improve our situation and that of those around us.

I urge you not to waste the gifts that you have been given (*see 1 Corinthians 12:7–10*) but to use these for the benefit of all; do not waste time by 'sitting on your hands' whilst opportunities pass you by. Unfortunately, sometimes people judge others by their actions and not what they were thinking about doing. In the words of Louisa – 'Just let's do it'.

With best wishes Ian

The funeral of Janet HILL of Greenfields, took place at Hawkinge Crematorium on 10th October. We particularly remember her husband John and all the family at this time.

Her ashes will be buried in St Martin's Churchyard, Cheriton on Thursday 3rd November.

Reminders - Service of Remembrance at Sellindge

10.30 am Sunday 13th November – Remembrance Sunday.

Party Time for STIR UP SUNDAY – 11 a.m. 20th November at the Parish Church

Please come along and help us 'stir up' the Christmas pudding! To be shared at the Carol Service.

Sellindge Church Christmas Fair 12th November in the Village Hall – from 10am to 2pm

Come and have lunch with Father Christmas and buy some of your Christmas presents.

Parish Communion Service, 11.00 a.m. on Sunday 27th December at the Parish Church.



Last We Forget.

LOOKING AHEAD TO 2017

Our clergy, Richard and Ian have recently made Churchwardens and PCC members aware that they both intend to retire next year. Whilst no specific dates have yet been agreed, it is anticipated that Ian will leave towards the end of May, with Richard following about three months later. Discussions are now beginning to take place with regard to the future pattern of ministry within our Benefice of six Churches and more information will be given as plans take shape.

Please feel free to contact either myself, Ian on 01233 501 039 or Richard, on 01303 812 697 or if you think that there is anything that we can help you with or if you want to enquire about a Christening or Wedding.

Part of the A20 Benefice comprising the parishes of

Brabourne, Mersham, Monks Horton, Sellindge, Smeeth and Stowting. www.A20churches.org.uk

WHAT'S ON AND WHERE NOVEMBER 2016 *Stick it on your fridge or pin board*

WEEKLY EVENTS

- MONDAY** PILATES – 9.15am – 10.15am – Village Hall (Main) - 07543 543 373 vsaker@hotmail.com
PILATES – 10.15am – 11.15am – Village Hall (Main) - 07543 543 373 vsaker@hotmail.com
QIGONG – 11.15am – 12.15pm Village Hall (Main) - - 07543 543 373 vsaker@hotmail.com
CRAFT GROUP – 1pm to 3pm Sellindge Sports & Social Clubhouse 07546 532 603
RAINBOWS – 4.00pm – 5.00pm Village Hall (Main) - - 812 297 (Term time)
BROWNIES – 5.15 - 6.45pm Village Hall (Main) - - 812 297 (Term time)
GIRL GUIDES - - 5.45 – 7.15pm Village Hall (Durling) - - 07801 572 300 (Term time)
LINE DANCING – Beginners 7.30pm – 9.30pm Village Hall (Main) – 07753 274 913
- TUESDAY** NHS EAST KENT HEALTHWALKS – 10.15am Village hall car park – 01303 814 014
PULSE – 5.30pm to 6.30pm Sellindge Sports & Social Clubhouse
LINE DANCING – 1pm to 2.45pm Village Hall (Main) – 01303 813 098
LINE DANCING -- Intermediate Level 7.30 - 9.30pm Village Hall (Main) - - 01303 813 161
WHIST DRIVE -- 7.30 pm Sellindge Sports & Social Clubhouse, Swan lane. - - 814 511
- WEDNESDAY** ART GROUP Painting for all – 2pm – 4pm Sellindge Sports & Social Clubhouse, Swan Lane 812 593
BEES BODS (Dance exercise) – 5.45pm – 6.45pm Village Hall (Main) - - 01303 813 274
TAEKWONDO -- 6.30pm at Sellindge Primary School - - 814 635
AEROBIC BODY BLAST -- 7.00 - 8.00pm Village Hall (Main) - - 01233 820 109
- THURSDAY** LINE DANCING – Beginners 12 Noon to 1.00pm Village Hall (Main) – 01303 813 098
LINE DANCING – Easy Intermediate 1.00pm to 2.45pm Village Hall (Main) – 01303 813 161
LINE DANCING -- Intermediate 7.30pm - 9.30pm Village Hall (Main) – 01303 813 161
BINGO -- 7.30pm at Sellindge Sports & Social Clubhouse, Swan Lane. phone 812 437
- FRIDAY** ART GROUP painting for all – 9.30am – 11.30pm Sellindge Sports & Social Clubhouse, 812 593
SING, DANCE, PLAY – 10am – 10.45am Village Hall (Main) (Term Time) ****NEW****
CUBS -- 6 - 7.30pm BEAVERS -- 6.30-7.30pm SCOUTS -- 7.30-9.00pm Village Halls - - 813 250 (Term t)
- MON / TUES / WED – SELLINDGE POP IN – DURLING HALL – Mon/Wed 8.00am - 12 Tues 8.00am - 4.00pm – 813 475

*****MONTHLY*****

- IMPERIAL DOLLS HOUSE CLUB on Tuesday 8th at 7.00pm Village Hall (Committee Room) - - 812 946
PARISH COUNCIL on Tuesday 8th at 7.30pm Village Hall (Durling) - - Chair 07710 260 757 Clerk 01303 813 271
GET TOGETHER CLUB on Wednesday 9th from 2.00pm – 4.00pm Village Hall (Durling) - - 813 454
BABY CLINIC on Monday 14th 2.00pm - 4.00pm at the Sellindge Surgery Appointment only - - 812 616
GARDENERS' ASSOCIATION on Wednesday 16th 7.30pm Village Hall (Durling) – 813 288 or 01843 597 710
ANGEL CENTRE on Wednesday 23rd – 7.30pm to 9.30pm Village Hall (Durling)
SEQUENCE DANCING CLUB on Saturday 26th at 7.30pm – 10.30pm – Village Hall (Main) – 01233 629 815
BABY CLINIC on Monday 28th 2.00pm - 4.00pm at the Sellindge Surgery Walk In Clinic - - 812 616

SAT 5th – TABLE TOP FAIR - MAIN HALL – 9am – 1pm

SAT 12th – ST MARYS CHRISTMAS FAIR – MAIN HALL – 10am – 2pm

SUN 13th – SERVICE OF REMEMBRANCE – ST MARYS CHURCH – 10.30am

=====

SOCIAL FOOTBALL TENNIS THE SELLINDGE SPORTS AND SOCIAL CLUB BOWLS POOL DARTS CRICKET

SATURDAY 5th – BONFIRE and FIREWORKS
GATES OPEN 5pm WITH FIREWORKS AT 7pm

SAT 12th – XMAS CRAFT and NEW GOODS – 10am – 1pm
PROCEEDS TO PILGRIMS HOSPICE

Opening hours Tues to Fri 5.00pm to 10.30pm – Sat 12 Noon to 11pm – Sun 12 Noon to 7.00pm
Contact Social Club on 812 437 www.sellindgeclub.co.uk

SELLINDGE INFORMATION PAGE NOVEMBER 2016

SELLINDGE PARISH COUNCIL www.sellindgepc.kentparishes.gov.uk  @ParishSellindge 01303 813 271
Sellindge PC Office, Sellindge Village Hall, Sellindge, Kent – TN25 6JY sellindge-parishcouncil@btconnect.com
The Parish Councillors and District Councillors – (Highway issues contact C Mason – 07974 970 342)
Elected May 2015 – Stanley Bull (Chairman) of Swan Lane, Nigel Fursdon (Vice – Chairman) of Moorstock, Chris Mason of Swan Lane.
Co – Opted July 2015 – Mrs J Tritton of Greenfields.
Co – Opted May 2016 – Ms J Varrier – Smith of Greenfields and Mark Pullen of Greenfields.
Co – Opted October 2016 – Philip Cogan of Barrow Hill.
Clerk and RFO to the Parish Council Linda Hedley - - - - - Clerk to the Burial Ground Linda Hedley
The Parish Council Office is located in the grounds of the Village Hall (behind) and is open to the public on Tuesday's and Friday's – Tuesday 9.00am – 11.30am Friday 3pm to 5.30pm
SHEPWAY (North Downs West Ward) District Councillor – Mrs Jennifer Hollingsbee 01303 812 066
KENT COUNTY COUNCIL (Elham Valley Ward) Councillor – Mrs Susan Carey – 01303 670 561
SHEPWAY DISTRICT COUNCIL – 01303 853 000 (main switchboard) www.shepway.gov.uk
KENT COUNTY COUNCIL – 03000 41 41 41 (helpline) www.kent.gov.uk e-mail county.hall@kent.gov.uk
KENT COUNTY COUNCIL HIGHWAYS – 03000 41 81 81
SELLINDGE RESIDENTS ASSOCIATION – www.slurry.org.uk – sellindgeresidents@gmail.com
POLICE Non emergency – 101 – Emergency 999
ALL EMERGENCY SERVICES – POLICE – FIRE & RESUE – AMBULANCE – 999
KCC COMMUNITY WARDEN John Lodge – contact details to follow
DOCTORS SURGERY – 812 180 website www.sellindgesurgery.nhs.uk Out of hours phone 111
Patient Participation Group – 812 180
Minor Injuries small wounds, burns – Hamstreet (8am – 6pm) 08444 773 989 Wye (8.30am – 6pm) 08444 878 419
Dental emergency – (No Dentist) – 0808 238 9797 – evenings and weekends – 01634 890 300
Late night pharmacy – Boots (Sevington) – 01233 503 670
HOSPITALS – William Harvey (Ashford) 01233 633 331 - - - - - Royal Victoria (Folkestone) 01303 850 202
Kent and Canterbury (Canterbury) 01227 766 877 All hospitals website www.ekhuft.nhs.uk
SELLINDGE PRIMARY SCHOOL – 01303 812 073 website www.sellindge-ashford.kent.sch.uk
LITTLE LEARNERS AT SELLINDGE PRE-SCHOOL MON – FRI 8am - 6pm Sellindge School 814 968
KCC MOBILE LIBRARY All times approx. *NOVEMBER* www.kent.gov.uk/leisure_and_culture/libraries.aspx
Thursday 10th and 24th – 9.15am to 9.45 am A20 Hythe lay – by near Swan Lane.
Friday 11th and 25th – 12.30pm – 1pm Greenfields lay – by.
AGE UK HYTHE & LYMINGE – 01303 269 602 www.ageuk.org.uk/hytheandlyminge
AGE UK FOLKESTONE – 01303 279 621 www.ageuk.org.uk/folkestone
CITIZENS ADVICE BEARU – Folkestone 01303 249 310 (10am – Noon Tues – Fri) www.shepwaycab.co.uk
Ashford 01233 626 185 (9.30am – 4.30pm Mon – Tues & Thurs)(1pm Wed & Fri)
THE SAMARTITANS – Folkestone 01303 255 000 Ashford 01233 610 000
UTILITY EMERGENCY
POWER CUT – www.ukpowernetworks.co.uk Call 105 from landlines and mobiles
Please note that in a power cut telephones that have an electric basestation will not work, it is a good idea to have at least one conventional phone, that just plugs into the phone socket, these are not normally affected.
WATER – www.affinitywater.co.uk emergency 0345 357 2401 Mon – Fri 7am – 8pm Sat 8am – 4pm
SEWAGE – www.southernwater.co.uk emergency 0330 303 0368
SELLINDGE VILLAGE HALL Registered Charity 302833  Anybody wishing to book the Village Hall ring 01303 813 250 any day except Sunday and preferably no later than 8.30pm. Bookings **MUST** be confirmed in writing as soon as possible. We now have an e-mail address. sellindgevillagehall@gmail.com
SELLINDGE SPORTS & SOCIAL CLUB  Anyone wishing to book the clubhouse or pitches call 812 437 from 5pm Tuesday to Sunday or e-mail club@sellindgeclub.co.uk Fully licensed bar, catering available.
ITEMS FOR THE DECEMBER 2016 NEWSHEET Should be delivered to the Parish Council Office or e-mail nnwfursdon@aol.com by 2200 hours (10pm) on **SUNDAY NOVEMBER 20th 2016** with a 'contact' name, address and / or tel number (not for publication) phone 07437 948 509 and I will collect



Nick Uttley Builder

01233 628999

Bricklaying Conversions Carpentry
Extensions Plastering Roofing Painting
& Decorating Conservatories & Patios

30 Years Experience, Free Estimates
Quality Work Guaranteed



BLINDS and CURTAINS
Made to Measure - Interior Shutters
Conservatory Blinds
Full range of Tracks and Poles
A Family Business Local to YOU



For free quotation call Fitting Creations on 01303 894 882
Visit us online at www.fittingcreations.com

Containerised Storage

Available in southeast of Ashford
Fully secure

Indoors or outdoors

Competitive rates

Tel: 01233 720871 / 812237

Email: janestafford@tdenneandsons.co.uk

J. HICKINBOTHAM

Handyman and Computer Services

Inside and Outside work undertaken. Computer problems solved.

Tel: 01303 812501

Email: hickinbotham@btinter.net
Swan Lane, Sellindge

Microwave Service Company Ltd

Repairs to all makes of Domestic and Commercial
Microwave ovens

Spares, Accessories, Cookware and Kitchenware
01303 813530

Main Road - A20, Sellindge

East Kent Foot Care

Mobile Foot Health Practitioners

Jo Shapter BSc (Hons), MCFHP, MAFHP

Treating and managing common foot
problems, corns, callus, verrucae,
thickened nails, toe nail management,
fungal problems, diabetic foot
assessments etc.

Call: 07745 532075

info@eastkentfootcare.co.uk

Members of the British Association of Foot Health Professionals



Bob Fisher, The Garage, Ashford Road, A20, Sellindge, Kent TN25 6AQ

TYRES

BATTERIES

EXHAUSTS

Bob Fisher's

GARAGE - SELLINDGE
01303 814131

Competitive prices on all your car needs - on your doorstep
Jig work - Accident repairs - Recovery
Mechanical repairs - Valeting
Vehicle collection arrangement for servicing
MOT testing with no re-test fee

JM BOOKKEEPING/ ADMINISTRATION SERVICES

Are you good at the work you do but hate the paperwork and figures.

I have the knowledge and technology to take care of that side of
your business. I can organise your paperwork, invoicing, accounts,
payrolls and vat returns while you get on with your trade.

This can be done at your premises or mine. References are available.

Tel: Jane on 01303 812077 OR 07885 598089

FREELANCE HAIRDRESSER

Wedding Hair ** Special Occasions

Colours ** perms

Hair Extensions ** Cut & Finnish

Call Julie for a Consultation 07840 042 568

jmvs@sky.com

Thinking of selling in Sellindge this Summer?

For helpful, straightforward
advice contact:
Ashford:
01233 502222



HOBBS-PARKER
The Villages

The specialist Village agent