

SELLINDGE VILLAGE NEWS

JANUARY 2020

Edition 669



HAPPY NEW YEAR

SELLINDGE HOLDS THE FIRST CAROL SINGING ON THE NEW VILLAGE GREEN



Sellindge had its first Carol Singing on the Village Green on Saturday December 14th at 6pm. It was a great success, despite the chilly temperature with around 100 Villagers and friends joining in. Mulled Wine and Brandy Mince Pies were served afterwards in the Durling Hall. It is hoped that this may be the first of many to come and become a Sellindge tradition.



PILGRIMS HOSPICE JUMBLE SALE

Pilgrims Hospice Jumble Sale takes place in Sellindge Village Hall on Saturday January 11th 2020 at 1pm. Donations for Raffle Prizes welcome. Jumble Collection please call 01303 812 435 nearer the day.



SELLINDGE SPORTS and SOCIAL CLUB

DEC 31st – NEW YEARS EVE PARTY – 7pm to 1am

JAN 1st – AFTERNOON AT THE RACES – 2pm to 6pm

So here I am a week before Christmas writing the report for the first newsletter of 2020. When you get a copy of this, the festive holidays will be over. Members hope you had a restful time, and I hope there is no turkey curry left! The last meeting of 2019 saw a Parish Councillor leave and a new one arrive.

It was with reluctance that I read the email from Chris Mason, sent just prior to the start of the meeting, stating he would be resigning from the Parish Council. Over the years he has been a stalwart of the Council; he attended many meetings representing the Parish Council and spoken on behalf of the parish. On a personal note his support has been a great help with the Finance & General Purposes Committee. A vote of thanks was unanimously agreed.

There will be a need to formally advertise the vacancy, however this will be done later, at the start of the year.

Later, during the same meeting, it was with pleasure your Parish Council co-opted Ron Yates to be a member of the Parish Council. Having moved in to the village he felt this would be a good way to find out about the village and ways in which he could help out as well.

Your Parish Council received notification of a Review of the Local Plan and that the way in which the housing supply is required, has been slightly increased. However, within the review it is noted that Folkestone and Hythe District Council believe the increase required by Central Government will not have a major impact and they will not require any further land; this is good news but do read the document, there is a paper copy in the office or it can be down loaded from the District Council Website.

Under the heading 'to note the last F&GP Minutes' the following was reported to the full Parish Council:

After the November meeting where your Parish Council decided not to purchase a Tommy for the village, your Chairman decided that one would be purchased privately and this has taken place. One or two individuals have offered to make a contribution, so during the 75th VE Day remembrance there will be a statue some-where in the village. If you have any ideas, please let the Clerk know by phone or email.

Work should soon be completed on the play area of the Village Green and while mentioning the Village Green, please can you remember, that even here you need to pick up after your dog.

Your Parish Councillors would like to wish you a happy and prosperous New Year.

The next meeting of Your Parish Council is on 14th January 2020, and as normal anyone can attend to hear what is being discussed. From your Parish Council Clerk Linda Hedley

Dog Poo Bags – The Parish Council is still providing these for use free of charge, members consider that this has made a difference to the village. Simply come to the Parish Council office Tues 9am – Noon & Fri 3pm – 5.30pm

The Chairman and other Parish Councillors would like to say 'thank you' to all those who are taking the time and trouble to pick up after their dog/s.

For more information please visit our website – www.sellindge-pc.gov.uk



COFFEE 'n' CHAT – in The VILLAGE HALL
Coffee 'n' Chat reopens on January 6th 2020
Open – Mondays and Tuesdays from 10am to 12 Noon
(Please note winter opening times)

Come into the friendly, relaxing atmosphere of Coffee 'n' Chat for a nice cup of coffee, or tea if you prefer, cold drinks are also available and various snacks, meet friends, make new friends.

There is a good selection of books, all at 20p, which is regularly re-stocked with new titles.

VILLAGE HALL BINGO – Every Tuesday from 2 – 4pm in the Durling Hall

Tues 14th – East Kent Foot Care will be at the Village Hall (in the Committee Room) from 9am to 1pm.

'The cost is £20 for Toe nail cut and £25 for more complex foot care'.

Hi Kent the Kent charity for the deaf, for advice, servicing hearing aids as the News has gone to print early no date has been confirmed yet, pop into Coffee 'n' Chat for information.

Internet Access – Photocopying – Free WIFI

SELLINDGE LADIES LUNCH CLUB

The venue for January 2020 will be at 'The Dukes Head' Sellindge on Wednesday January 22nd 2020.

Please let June Wales know by phoning 01303 814 676 by Wednesday January 15th 2020

NEW YEAR INDOOR TABLE TOP SALE

New year indoor table top sale Saturday 18th January 9am - 1pm at Sellindge sports club tables available £6 - to book contact jeanette 07753 283 575. Refreshments available - free entry - plenty free parking.

FROM YOUR FOLKESTONE & HYTHE DISTRICT COUNCILLORS

Jenny Hollingsbee and Susan Carey, Ward Councillors for North Downs West, F&H D C

Jenny.hollingsbee@folkestone-hythe.gov.uk 01303 812 066 susan.carey@folkestone-hythe.gov.uk 01303 670 561

Housing was not a big issue at the General Election but if you looked at the manifestos of the parties standing in our area there were commitments to build more. Labour 250,000 a year, Liberal Democrats 300,000 a year, Greens 100,000 a year and the Conservatives who won 60% of the vote in this constituency are also committed to new homes. It's against this background that your District Council is continuing its work on our Local Plan to say where these new homes should go. The Places and Policies Local Plan for our area has now had several rounds of public consultation and been examined in public by an Independent Planning Inspector. The Inspector required that the District Council identify a site/s for gypsy and traveller pitches. A suitable site for 4 pitches was identified in Old Romney and this has been consulted on and agreed by the Inspector. This means the final draft of the Plan with the Inspector's changes can be issued for one last chance for comment by those (and only those) who submitted comments last time. The whole process should be complete by May 2020.

A fully approved Local Plan gives our district protection from speculative development and gives certainty to communities and good developers. We are also fortunate to have a very large share of the new housing and employment sites met by the new Garden Town at Otterpool Park where we can provide the schools, medical and community facilities to support them. Earlier this year the District Council acquired Westenhanger Castle which borders the new town. The castle, its sixteenth century barn and 14 acres of parkland will form an integral part of the Garden Town. An Open Day was held on 30 November for residents of our district to visit the castle. As the castle has been in private ownership for many years, this was the first time many local people had had the opportunity to see inside. Around 350 people took part the Open Day and we hope to have more such events in 2020.

We are also pleased to report that at our Council meeting on 20 November the funding for future development of Otterpool Park was agreed.

Jenny attended the AGM of Age UK Hythe & Lyding which offers services to residents of Sellindge. The new Dementia areas in Lyding have been very well received and have attracted many clients. However, there is capacity to take more people and residents over 50 years of age are encouraged to visit to see the services on offer, which also include delivery of meals. The shops at both the centres are open Monday to Friday 9am - 3.30pm AND on Saturday mornings from 9.30am - 12.30pm. Volunteers are always welcome and details can be found on the website.

We were both able to attend the Table top sale at the Sports & Leisure Centre on 07 December and Jenny attended the Sellindge Primary School Christmas Fair the same day and Sellindge Parish Council on 10 December. We are always happy to meet with residents to discuss District Council matters so do please contact us and we will come to see you.

We wish you all a Happy and Prosperous New Year. Susan Carey and Jenny Hollingsbee your District Councillors



Emma and I would like to thank everyone who has taken part in our Homeless Appeal.

Your donations are really appreciated, we will continue collecting clothing and food until the end of February 2020. The items below have been donated so far in 2019.

24 Jumpers, 5 Fleece Jackets, 9 Jogging Bottoms, 13 pairs of Trousers, 10 Scarves, 14 Coats, 3 Shirts, 17 T Shirts/Tops, 6 Cardigans, 4 Body Warmers, 1 pair of Trainers, 2 pairs of Boots, 4 Blankets, 2 Sleeping Bags, 5 pairs of Socks, 5 pairs of Pants, 2 Jackets, 1 Bag, 1 Bedding Set and 4 Children's Coats.

Many items of Food and Toiletries have also been donated, and the Co Op has been kind enough to place a Trolley of Kindness in their store where many items have been donated.

Actions on Homelessness in Folkestone Charity are very grateful for all your donations.

Emma and I hope you had a lovely Christmas and Wish you a Healthy, Happy New Year xx

VILLAGE HALL

The Village Hall Committee is happy to support the various charity collections in the village.

However, please do not leave donations in the porches when the Village Hall is unoccupied.

FROM YOUR KCC COUNCILLOR Susan Carey, Elham Valley Ward. susan.carey@kent.gov.uk 01303 670 561

KCC has recently held consultations on our 2020/21 budget, our Low Emissions Strategy and on Biodiversity. Thank you to those of you who responded. Work continues on the budget for 2020/21 which will be agreed at our meeting on 13 February. I am also working with KCC's officers on the plans for a zero carbon Kent by 2050. This date may seem far away but it actually requires considerable progress by earlier dates to meet the target. Work is already underway on many projects as diverse as district heating, solar farms on our closed landfill sites and significant tree planting. 2020 will see KCC publish a plan for achieving zero carbon with key milestones for how we will reach this goal.

Do please continue to report potholes and other highway problems to KCC. Online is best as you can use a map to pinpoint the location. Go to www.kent.gov.uk and search for 'Highways'. You can also ring 03000 41 81 81 in office hours or 03000 41 91 91 for emergencies outside this time. Always note the reference number you are given which helps if the problem needs chasing. For the whole of 2019 to the week ending 06 December our contractors had fixed 3,770 potholes and patched 56,384 sqm of road in our District.

Residents who live near the Main Road through Sellindge have had disturbed nights from the motorway closures. Highways England which manages the UK's motorway network is adamant that these closures are necessary. Kent Highways Services (KHS) has liaison meetings with Highways England and KHS assured me that they do what is possible to mitigate the effects of such closures on Kent's residents. During the recent closures the signs at the M20 Junction 10 roundabout saying 'Unsuitable for heavy goods vehicles' were reinforced by a CCTV van. Works on the junction 10 A and general resurfacing should be complete by this Spring so there should be some relief by then. Susan Carey, Member Elham Valley, Kent County Council

CRISP PACKETS

I would like to thank all the residents who have saved Crisp Packets for the Air Ambulance Appeal over the last few weeks. You saved approximately 20,000 packets from going to land fill and made money for the Air Ambulance.

I will **NO** longer be collecting them after January 31st 2020.

However, if you would like to continue collecting them you can drop them off at HYTHE SWIMMING POOL.

I would also like to Thank the Co-Op for their support.

Margaret xx

A BIG THANK YOU

A very Big Thank You to everyone who has supported my efforts in fund raising for East Kent Hospitals Charity - Dementia Appeal.

£1,654.54p has been raised this year through sales of crafts, gifts, jams, veg etc. The money raised by the charity will be used to improve facilities and provide much needed items to support Dementia patients.

Special thanks go to Angie (Hobbs and Hearts), Ping and Charlotte for all their help.

TWIDDLE BLANKET THANKYOU

Hi Everyone, you may recall a while back that I made an appeal for wool donations so that I could knit twiddle blankets for the dementia suffers, which I then donated to the William Harvey Hospital.

Well, I was absolutely inundated with offers of wool, so I am pleased to announce that thanks to all your kind generosity I have been able to make 160 Twiddle Blankets and 20 lap blankets which have been gratefully received.

So on behalf of all the blanket recipients a very big thank you to all of you who donated wool.

Thank you, Linda Healy

SELLINDGE GARDENERS' ASSOCIATION

The next meeting is on Friday 17th January there will be Quiz.

There will also be a '**BRING and BUY SALE**' and the public are most welcome to come.

Non-members are always very welcome to come along - free of charge - **1.45 for 2pm** start in the Durling Room.

SELLINDGE SPORTS and SOCIAL CLUB – What's on at the Club in January 2020.

New Year's Eve 7pm to 1am New Year's Eve Party all welcome.

New Year's day open 2pm till 6 pm Afternoon at the Races.

January 18th – New Year Indoor Table Top Sale – 9am to 1pm

STOUR DOWNS PARISH CHURCHES – ST MARY'S CHURCH SELLINDGE

Rev. Chris' New Year Thought

I often joke to my family that as a short-sighted glasses wearer, I have trouble seeing the year ahead because I don't have 20:20 vision...

But here we are, suddenly in a new year and a new decade. Where did the last one go? And wasn't it the Millennium five minutes ago?!

We are yet again at the gateway of another year. A gateway we have to go through, leaving behind all the events and memories of the old year – all of that now known and recorded and part of our history.

Here we are, with no choice but to step out into the unknown, into the uncertainty of the future. But while we may not know *what* lies ahead, we can- if we put our faith in Jesus-know *who* lies ahead. He promises to be the Way, the Truth, and the Life for all time. No matter what this New Year, and indeed new decade, may bring, we do not need to move into it or go through it alone. Jesus is already there, as he was in the beginning. Don't leave the Christ child behind in the stable as we move into January- walk forward with confidence and faith in the one who walks with us through every New Year and unknown path. May this year be one where you might explore and discover more what it is to know and journey with Jesus.

Wishing you every blessing for 2020,

Chris

January Services at St Mary's Sellindge in the Stour Downs Parish

All services and information for the Stour Downs Parish at www.stourdowns.org.uk

See also St Mary Sellindge Facebook page

Sunday 5th January – Christians Together informal gathering at 11:00am in the Durling Hall (look for further details to come on our Facebook page and website)

Sunday 19th January – Communion at 11:00am in St Mary's Church.

Sunday 26th January – Party Church at 3pm in St Mary's Church: fun, mess and silliness for all!

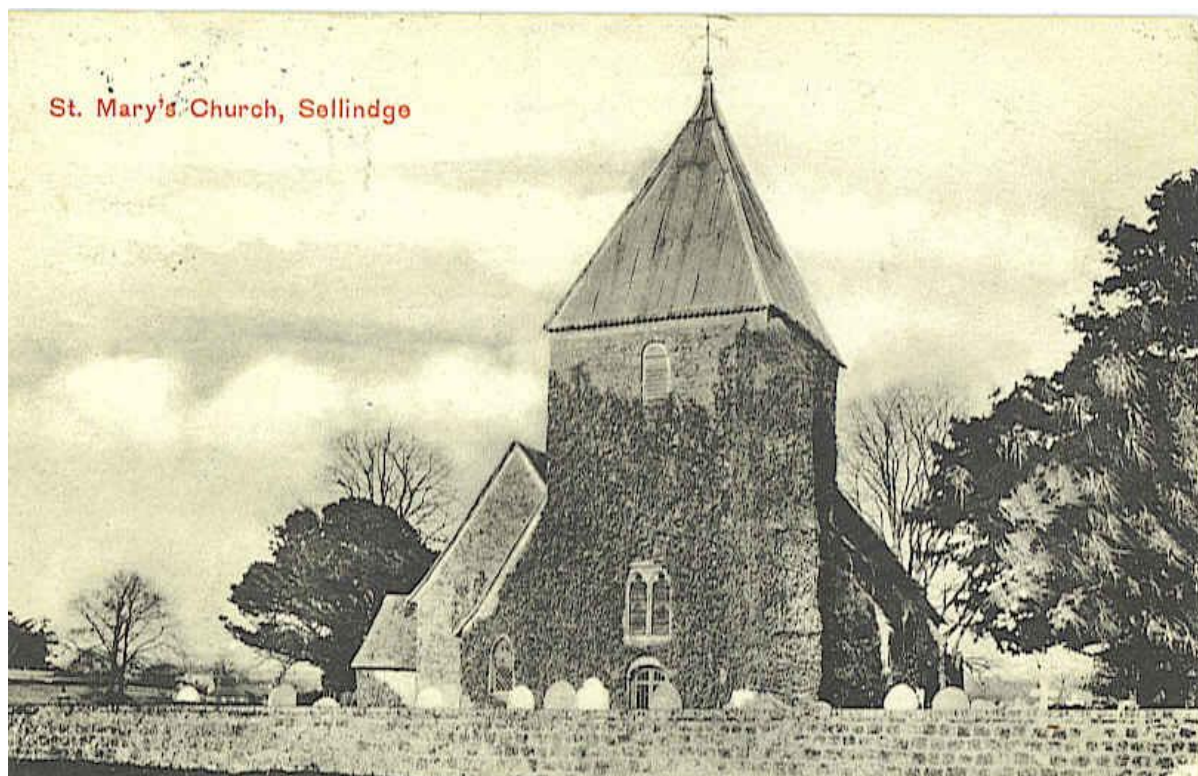
Rev. Chris' Christmas Message

Rev Chris Denyer: parishpriest@stourdowns.org.uk 01303 470 791

The Stour Downs Parish website: www.stourdowns.org.uk

St Mary's Sellindge on Facebook - www.facebook.com/stmaryssellindge

Stour Downs on Facebook www.facebook.com/stourdownsparish Twitter@DownsStour



WHAT'S ON AND WHERE JANUARY 2020 *Stick it on your fridge or pin board*

WEEKLY EVENTS

MONDAY	PILATES – 9.15am – 10.15am – Village Hall (Main) - 07543 543 373 vsaker@hotmail.com PILATES – 10.15am – 11.15am – Village Hall (Main) -07543 543 373 vsaker@hotmail.com CRAFT GROUP – 1pm to 3pm Sellindge Sports & Social Clubhouse 01303 260 220 RAINBOWS – 4.00pm – 5.00pm Village Hall (Main) - - 812 297 (Term time) BROWNIES -- 5.15 - 6.45pm Village Hall (Main) - - 812 297 (Term time) LINE DANCING – Beginners 7.30pm – 9.30pm Village Hall (Main) – 07753 274 913
TUESDAY	NHS EAST KENT HEALTHWALKS – 10.15am Village hall car park – 01303 814 773 VILAGE HALL BINGO – 2pm to 4pm – Village Hall (Durling Hall) ***NEW*** LINE DANCING – Improvers Level – 6pm – 7pm Village Hall (Main) – 07989 210449 LINE DANCING -- Intermediate Level 7.30 - 9.pm Village Hall (Main) - - 01303 813 161 WHIST DRIVE -- 7.30 pm Sellindge Sports & Social Clubhouse, Swan lane. - - 814 511
WEDNESDAY	PILATES – 9.45am Sellindge Sports & Social Clubhouse, Swan Lane 07703 792 388 ***NEW*** ART GROUP Painting for all – 2pm – 4pm Sellindge Sports & Social Clubhouse, Swan Lane 812 593 BEES BODS (Dance exercise) – 5.45pm – 6.45pm Village Hall (Main) - - 01303 813 274 TAEKWONDO -- 6.30pm at Sellindge Primary School - - 814 635 AEROBIC BODY BLAST -- 7.00 - 8.00pm Village Hall (Main) - - 01233 820 109
THURSDAY	LINE DANCING – Intermediate 11am to 12.30pm Village Hall (Main) – 01303 813 161*NEW TIME BINGO -- 7.30pm at Sellindge Sports & Social Clubhouse, Swan Lane. phone 812 437
FRIDAY	ART GROUP painting for all – 9.30am – 11.30pm Sellindge Sports & Social Clubhouse, 812 593 CUBS -- 6 - 7.30pm BEAVERS -- 6.30-7.30pm SCOUTS -- 7.30-9.00pm Village Halls - -813 250 (Term t)
MON / TUES – COFFEE 'N' CHAT – DURLING HALL – Monday and Tuesdays 9.00am - 12 Noon – 813 250	
TUESDAY / FRIDAY – PARISH COUNCIL OFFICE OPEN – TUESDAY 9am – 12 NOON & FRIDAY 3pm – 5.30pm	

*****MONTHLY*****

VILLAGE PRAISE on Sunday 5th at 11am Village Hall (Durling)
BOOK CLUB on Monday 6th from 7.30pm Sellindge Sports & Social Club - - phone 812 437
BABY CLINIC on Monday 13th 2.00pm - 4.00pm at the Sellindge Surgery Appointment only - - 812 616
PARISH COUNCIL on Tuesday 14th at 7pm Village Hall (Durling) -Chair 07710 260 757 Clerk 01303 813 271
GET TOGETHER CLUB on Wednesday 15th from 2.00pm – 4.00pm Village Hall (Durling) - - 813 080
GARDENERS' ASSOCIATION Friday 17th at 2pm Village Hall (Durling) Chris - 813 875 or Betty - 01843 597 710
BABY CLINIC on Monday 27th 2.00pm - 4.00pm at the Sellindge Surgery Walk in - - 812 616
ANGEL CENTRE on Wednesday 29th at 7.30pm – 9.30pm Village Hall (Durling)

.....

SAT 11th – PILGRIMS HOSPICE JUMBLE SALE – VILLAGE HALL – 1pm

SOCIAL FOOTBALL TENNIS THE SELLINDGE SPORTS AND SOCIAL CLUB BOWLS POOL DARTS CRICKET

BT – TV Traditional Sunday Carvery 1pm to 5pm (bookings required) BT SPORT

TUESDAY DECEMBER 31st – NEW YEAR'S EVE PARTY – 7pm to 1am

WEDNESDAY JANUARY 1st – AFTERNOON AT THE RACES – 2pm to 6pm

SATURDAY 18th – NEW YEAR INDOOR TABLE TOP FAIR – 9am to 1pm

Opening hours Mon to Fri 3pm to 11pm – Sat 12 Noon to 11pm – Sun 12 Noon to 10pm

Contact Social Club on 812 437 www.sellindgeclub.co.uk

SELLINDGE INFORMATION PAGE JANUARY 2020

SELLINDGE PARISH COUNCIL  @ParishSellindge 01303 813 271

<http://www.sellindge-pc.gov.uk>

Sellindge PC Office, Sellindge Village Hall, Sellindge, Kent – TN25 6JY clerk@sellindge-pc.gov.uk

The Parish Councillors and District Councillors – (Highway issues contact C Mason – 07974 970 342)

Elected May 2019 – S Bull of Swan Lane, N Fursdon of Moorstock Lane,

D Harris of Barrow Hill, C Brace of Barrow Hill.


Co-opted June 2019 – Mrs J Tritton of Greenfields S Parish of Grove Bridge

R Bristow of Swan Lane

Co-Opted December 2019 – R Yates of Swan Lane

The Parish Council Office is located in the grounds of the Village Hall (behind) and is open to the public on Tuesday's and Friday's – Tuesday 9.00am – 11.30am Friday 3pm to 5.30pm

FOLKESTONE & HYTHE DC (North Downs West Ward) Cllr – Mrs Jennifer Hollingsbee 01303 812 066 

KENT COUNTY COUNCIL (Elham Valley Ward) Councillor – Mrs Susan Carey – 01303 670 561 

FOLKESTONE & HYTHE DISTRICT COUNCIL – 01303 853 000 (switchboard) www.folkestone-hythe.gov.uk

KENT COUNTY COUNCIL – 03000 41 41 41 (helpline) www.kent.gov.uk e-mail county.hall@kent.gov.uk

KENT COUNTY COUNCIL HIGHWAYS – 03000 41 81 81

SELLINDGE RESIDENTS ASSOCIATION  – www.slurry.org.uk – sellindgeresidents@gmail.com

POLICE Non emergency – 101 – Emergency 999 Report online at www.kent.police.uk/report

ALL EMERGENCY SERVICES – POLICE – FIRE & RESCUE – AMBULANCE – 999



DOCTORS SURGERY – 812 180 website www.sellindgesurgery.nhs.uk Out of hours ☎ 111

Patient Participation Group – 812 180

Minor Injuries *small wounds, burns* – Hamstreet (8am – 6pm) 08444 773 989 Wye (8.30am – 6pm) 08444 878 419

Dental emergency – (No Dentist) – 0808 238 9797 – evenings and weekends – 01634 890 300

Late night pharmacy – Boots (Sevington) – 01233 503 670

Automated External Defibrillators (AEDs)–

Village Hall Main Rd, Sports & Social Club Swan Ln & Red Phone Box Greenfields. Dial 999 for code

HOSPITALS – William Harvey (Ashford) 01233 633 331 - - - - - Royal Victoria (Folkestone) 01303 850 202

Kent and Canterbury (Canterbury) 01227 766 877 All hospitals website www.ekhuft.nhs.uk

SELLINDGE PRIMARY SCHOOL – 01303 812 073 website www.sellindge-ashford.kent.sch.uk

LITTLE LEARNERS AT SELLINDGE PRE-SCHOOL MON – FRI 8am - 6pm Sellindge School 814 968

AGE UK HYTHE & LYMINGE – 01303 269 602 www.ageuk.org.uk/hytheandlyminge

AGE UK FOLKESTONE – 01303 279 621 www.ageuk.org.uk/folkestone

CITIZENS ADVICE – Folkestone 01303 249 310 (10am – Noon Tues – Fri) www.shepwaycab.co.uk

THE SAMARITANS – Folkestone 01303 255 000 Ashford 01233 610 000

UTILITY EMERGENCY

POWER CUT – www.ukpowernetworks.co.uk Call 105 from landlines and mobiles

In a power cut telephones with electric basestation won't work, it's good to have a conventional phone, that just plugs into the phone socket, are normally unaffected.


SEWAGE – www.southernwater.co.uk emergency 0330 303 0368


WATER – www.affinitywater.co.uk emergency 0345 357 2401 Mon – Fri 7am – 8pm Sat 8am – 4pm



****MOBILE LIBRARY**** All times approx. ***JANUARY*** www.kent.gov.uk/leisure_and_culture/libraries.aspx


Thursday 9th & 22nd – 9.15am to 9.45 am A20 Hythe lay – by near Swan Lane.

Friday 10th & 23rd – 2.50pm – 3.20pm Greenfields lay – by.

SELLINDGE VILLAGE HALL Registered Charity 302833  Anybody wishing to book the Village Hall ring 01303 813 250 any day except Sunday and preferably no later than 8.30pm. Bookings **MUST** be confirmed in writing as soon as possible. We now have an e-mail address. sellindgevillagehall@gmail.com

SELLINDGE SPORTS & SOCIAL CLUB  Anyone wishing to book the clubhouse or pitches call 812 437 from 5pm Tuesday to Sunday or e-mail club@sellindgeclub.co.uk Fully licensed bar, catering available.

Other Village Facebook groups – **Sellindge Village Community Group**  **Sellindge Village** 

ITEMS FOR THE FEBRUARY 2020 NEWSHEET Should be delivered to the Parish Council Office or e-mail nnwfursdon@aol.com or Nigel Fursdon  by 2200 hours (10pm) on **MONDAY JANUARY 20th 2020** with a 'contact' name, address and / or tel number (not for publication) phone 07437 948 509 and I will collect. 7



Nick Uttley Builder

01233 628999

Bricklaying Conversions Carpentry
Extensions Plastering Roofing Painting
& Decorating Conservatories & Patios

30 Years Experience, Free Estimates

Quality Work Guaranteed

Containerised Storage

Available in southeast of Ashford

Fully secure

Indoors or outdoors

Competitive rates

Tel: 01233 720871 / 812237

Email: annaparrett@tdenneandsons.co.uk

East Kent Foot Care

Mobile Foot Health Practitioners

Jo Shapter BSc (Hons), MCFHP, MAFHP

Treating and managing common foot problems, corns, callus, verrucae, thickened nails, toe nail management, fungal problems, diabetic foot assessments etc.

Call: 07745 532075

info@eastkentfootcare.co.uk

Members of the British Association of Foot Health Professionals



JM BOOKKEEPING/ ADMINISTRATION SERVICES

Are you good at the work you do but hate the paperwork and figures?

I have the knowledge and technology to take care of that side of your business. I can organise your paperwork, invoicing, accounts, payrolls and vat returns while you get on with your trade.

This can be done at your premises or mine. References are available.

Tel: Jane on 01303 812077 OR 07885 598089



Please support Hobbs & Hearts
small independent business
situated at Potten Farm

a wide range of cards & gifts for all occasions
plus furniture, clothing & accessories
at very reasonable prices

Open 7 days a week.

Please pop in and receive a very warm welcome

JVS.Hair/Brow stylist

Julie Varrier-smith

Beauty Stylist

All aspects of hair services on consultation.

HD Brow stylist and retail of Hd make-up

Find me on Facebook/instagram

01303814317 / 07840042568

J. HICKINBOTHAM

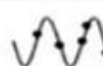
Handyman and Computer Services

Inside and Outside work undertaken. Computer problems solved.

Tel: 01303 812501

Email: hickinbotham@btinter.net

Swan Lane, Sellindge



MSC

microwave service company

DOMESTIC & COMMERCIAL MICROWAVE OVEN REPAIRS

LARGE SELECTION OF SPARES, ACCESSORIES,
COOKWARE AND HG CLEANING PRODUCTS

PLEASE CALL IN MAIN ROAD SELLINDGE 01303 813 530

AGM FENCING Ltd

Potten Farm, Sellindge

Fence Panels

Concrete posts

Trellis

Aggregates

Timber Posts

Decorative Stone

Gates

Cement

Free Delivery Service

Mon - Fri 8am to 5pm Sat 8am to 12.30pm

Call 01303 812 922 or visit us

FREELANCE HAIRDRESSER

Wedding Hair ** Special Occasions

Colours ** perms

Hair Extensions ** Cut & Finnish

Call Julie for a Consultation 07840 042 568

jmvs@sky.com

Thinking of
selling in
Sellindge
this Summer?

For helpful, straightforward
advice contact
Ashford:
01233 502222

The specialist Village agent



HOBBS-PARKER
The Villages