

SELLINDGE VILLAGE NEWS

APRIL 2023

Edition 708



Easter at St Mary's Sellindge

Good Friday Walk of Witness
10am from St Mary's
ending with Hot Cross Buns
at the Village Hall.
Easter Day 11am
Easter Communion

Soupa Thursday!



Thursdays at St Mary's Church
Sellindge 10am-2pm

FREE Coffee & Tea
Lunchtime Homemade Soup
Foodbank Open

There is a bus stop outside the church,
parking available in the lay-by parking area.

SELLINDGE FARMERS & CRAFT MARKET in SELLINDGE VILLAGE HALL

The next Sellindge Farmers & Craft Market is on
SUNDAY APRIL 16th Open at 9am to 1pm.
Check out the Sellindge Farmers & Craft Market Face
Book Page for more details.



The Orbit of The Egg

Saturday 25 March - Thursday 18 May
Doors Open daily between 10am - 4pm
St Mary's, Sellindge
admirably.warthog.intersect

EASTER MONDAY at the SELLINDGE SORTS and SOCIAL CLUB

Easter Monday we are open from 12 till 6pm, we
will serving food and drinks all day and will
have a free Easter egg hunt between 1pm and
3pm, all welcome

SELLINDGE PARISH COUNCIL

www.sellindge-pc.gov.uk 01303 813 271

clerk@sellindge-pc.gov.uk

The next meeting of your Parish Council is on
Tuesday April 11th starting at 6.30pm in the Durling Hall.

From your Parish Council Clerk Linda Hedley

Dog Poo Bags – Dog poo bags are still available from Nigel at Trust Cottages in Moorstock Lane, he puts them on a patio chair or table outside his house, as does the Chairman who places on the front garden wall if you phone him on his mobile 07710 260 751.

Also now available from the Dog Poo Bag dispenser which is located at the entrance to the Village Green.

Jenny Hollingsbee and Susan Carey, Ward Councillors for North Downs West, F&H D C

Jenny.hollingsbee@folkestone-hythe.gov.uk 01303 812 066 susan.carey@folkestone-hythe.gov.uk 01303 670 561

Every household should have now received a copy of Your District Today with news about the work of Folkestone & Hythe District Council. If you've not received a copy it is available online or you can contact us for a copy.

Veolia, the company that collects your kerbside waste on behalf of the District Council, has cut its carbon emissions by 5% over the last two years. They've optimised their routes to reduce fuel consumption, installed electric bin lifts on the waste collection vehicles, switched to LED lights and more efficient heating at their depot.

Another waste initiative is the Don't Let Your Recycling Go to Waste campaign to help residents put their waste in the right bin for recycling and avoid "wish-cycling", which is when something is put in a recycling bin in the hope it can be recycled. You can see tips and Frequently Asked Questions about recycling at www.folkestone-hythe.gov.uk/recycling-waste-bins/contaminationcampaign/1

Over 70% of Folkestone & Hythe District residents have signed up to MyAccount to access services, receive reminders about waste collections and pay their council tax online. Last month saw the launch of Housing Online where council tenants can view and update information about their property. They can also view balances and statements, book a repair, make payments and set up a Direct Debit. Online services provide 24/7 access and are increasingly popular. They bring an extra benefit by freeing up time at our Contact Centre for staff to deal with people who don't have digital access. MyAccount is also a quick and easy way to report issues.

UK Power Networks has given £27,300 towards the District Council warm spaces at New Romney, Hythe, Folkestone and the Nepalese Community Centre in Folkestone. The money will help with the costs of running the warm spaces and fuel vouchers and wheatgerm packs to those most in need. The warm spaces are open to everyone in the district and provide not just somewhere to be warm but company and activities.

The District Council has won £205,000 of Government funding to install three Changing Places toilets. Specialist equipment includes ceiling hoists and changing tables. The need for such toilets was raised by residents during the Folkestone Place Plan engagement sessions and they'll be sited at the Lower Leas Coastal Park, Folca (the former Debenhams store) both in Folkestone and at the Coastal Destination project in Littlestone. This should enable more severely disabled people to enjoy visits to these places.

We expect the outline planning application of Otterpool Park Garden Town to go to the Planning Committee on 04 April. Otterpool Park Garden Town was first proposed in 2016 and it's taken a long time to reach this point. It's intended to provide new homes of all sizes and tenures (self build, joint ownership, council homes, housing associations, starter homes, family homes, homes designed for the elderly) complete with its own facilities such as schools, doctors' surgery, shops and green spaces. We think this is the best way to provide the majority of the new homes our district needs rather than growing every existing village and town. Do check the Otterpool Park website for details of events – there is a programme of learning and other events for the year like the storytelling competition that attracted over 40 entries internationally and Jenny was fortunate to be a judge and present the prize.

We held our budget meeting on Wednesday 22 February: the Folkestone & Hythe District Council portion of council tax equates to about 16% of the total bill (including local Parish precepts). An increase of 2.97% (equivalent to less than 20p a week for an average Band D property) was agreed for 2023/24. Some projects will need to be put on hold or scaled back but services to our residents should not be affected. Residents who are in financial hardship can apply for help and you can find out more at

<https://www.folkestone-hythe.gov.uk/help-support-cost-living> or ring the council on 01303 853000.

We both attended Sellindge Parish Council on 14 March Jenny also attended the Patients Participation Group at Sellindge Surgery, the Sports & Social Club Meeting and the Governor's Monitoring Day at Sellindge Primary School



Help our Jack Fight Cancer

In September 2021 Jack of just 15 yrs old was diagnosed with a rare aggressive soft cell sarcoma. We are raising money to fund treatment/surgery abroad. To read Jack's full story visit our Facebook or GoFundMe pages using the links or QR codes below. Do please consider making a donation at our GoFundMe page.



[gofundme
https://gofund.me/6d34fbf1](https://gofund.me/6d34fbf1)



[facebook
https://facebook.com/helpourjackfightcancer](https://facebook.com/helpourjackfightcancer)

Thank you for your donations, every single penny will help Jack

KCC COUNCILLOR Susan Carey, Elham Valley Ward. susan.carey@kent.gov.uk 01303 670 561

Since March 2022, 3207 Ukrainians have found a temporary home in Kent under the Homes for Ukraine scheme and 892 more are still on their way. There's been a warm welcome to the Ukrainian refugees in Kent and we host more than any other county. The initial scheme was for people to host for up to six months but with the war still under way the scheme has continued. Not everyone has been able to offer accommodation for longer than six months and new hosts are needed for those Ukrainians already here and those on the way. There's information about how to take part in *Homes for Ukraine* and the payments for doing so on www.kent.gov.uk Whether it's a room, an annexe, or a second home if you could help and KCC has committed to top up the Government payments until at least March 2024.

Another area where KCC has sought to be as supportive as possible has been in our payments to care providers. The council tax rise for KCC has been set at 5% but we are raising payments for home care, residential care and nursing care by between 6% and 10%. Doing this means we have to make large savings in other areas of expenditure. The consultation on community services has now finished but you can expect to see numerous consultations throughout the year. To make sure you don't miss any of these you can register at www.letstalk.kent.gov.uk There's also a regular newsletter issued by KCC which you can sign up to at www.kent.gov.uk and this includes alerts when policies and proposals are open for comment.

Every autumn sees a consultation on KCC's budget and the results of this help shape the budget.

There's always been strong support for care of the elderly and child protection to be the top priorities but the consultation provides the opportunity for everyone to have their say.

The Government has announced an extra £200m funding to local government for potholes which should mean around £6m for roads in Kent. Kent has over 5,000 miles of road and we could easily use the whole £200m. We do of course keep asking for more but we are also trialling new types of road surface that use graphene and other technical innovations to reduce costs and extend the life of the road surface.

The challenge of keeping our roads in good condition is made greater by the dramatic increase in the number of times utility companies dig up our roads to lay new broadband fibre or replace their cables and pipes.

As well as the inconvenience of the road closures, the road itself is inevitably compromised whenever it is disturbed this way. KCC cllrs asked our Highways officers to find ways to reduce the frequency and duration of these closures. As ever, you can help by reporting potholes, fallen trees or other damage on our roads to www.kent.gov.uk (look for the highways section and use the interactive map to pinpoint the location) or ring 03000 41 81 81.

In either case you'll be given a reference number which will help should the issue need chasing.

Please remember there is help available for individuals and families struggling to pay bills (including council tax) and a useful place to look is on the KCC website under the 'Kent Together' banner or ring 03000 41 92 92. There's also help for those who need someone to talk to. 'Release the Pressure' has trained counsellors on 0800 107 0160 or text the word KENT to 85258. This service is available 24 hours a day seven days a week.

Despite the financial challenges there's still much good work going on and one example of this is a project I've been much involved in. KCC has now run two rounds of SolarTogether which uses collective buying power to secure a better price for solar panels and battery storage than an individual could obtain for themselves. Over 1,500 Kent households have taken part in round two (up sixfold on round one) and round three launched on 20 March. Those registering an interest can expect to receive a quote in June and they then have four weeks to accept it or not. You may receive a mailing about this and there will be information on the KCC website. I took part in round one myself and found the process very straightforward. Rooftop solar is an increasingly attractive option and SolarTogether can help make it more affordable.

**Looking for more?
On a journey of faith?**
Try out your local Filling Station

THE FILLING STATION
Informal expressions of the Christian faith

What is The Filling Station?
The Filling Station is an informal way of expressing the Christian faith. Our meetings gather in town halls, pubs and coffee shops.

Many people who choose to come along to a Filling Station meeting are on a journey of faith. Some have previously been involved in a church, some with no background of faith.

If that's you, we want you to feel so welcome! You'd find coffee, cake, music and a talk. Want to find out more?
www.thefillingstation.org.uk

Scan me to find details of your local meeting!

The first meeting will be on Thursday April 20th at 7.30pm in Sellindge Primary School

Disclaimer – The views are the views of those making the submissions and is not necessarily the views of the Editor or Parish Council

‘ASK FOR ANGELA’ SAFE SPACE SCHEME LAUNCHED

Shops in Folkestone town centre have thrown their support behind a safe space scheme to help anyone feeling anxious, overwhelmed or worried about their personal safety.

Bouverie Square retailers have joined the scheme which is using the same discreet approach as the ‘Ask for Angela’ bar and club safety campaign.

Shop staff will recognise if anyone approaches them and ‘asks for Angela’ that this is a code-phrase for requiring help and possibly a place of safety.

The scheme has been launched by the Folkestone & Hythe Community Safety Partnership and most of the shops taking part will be displaying ‘Ask for Angela’ stickers in the window.

Cllr Jenny Hollingsbee, Cabinet member for Communities,

said: “Sadly, we know that those who are struggling whether it’s with their mental health or with abusive relationships don’t always know where to turn.

“This support from retailers in Folkestone is very welcome – both their commitment to staff training and the provision of safe places.”

A Bouverie Place management team spokesperson said: “Stores in the centre have reported customers reaching out for help when they are overwhelmed with what they are facing in life.

“This initiative will enable stores to be able to respond initially and to know where to seek further help.”

Kent Police’s District Commander for Folkestone, Detective Chief Inspector Keith Taylor said: “We want everyone to feel safe when out and about, whether that’s in daytime or during the evening. I am pleased that this community scheme has now been extended to businesses in the town, to provide help or support to those in need when they are feeling vulnerable or at risk.

“Our officers are always out and about in the district, working with partners to keep Folkestone a safe place to live, work and visit, and this is another initiative which will help that work.”

To find out more about the ‘Ask for Angela’ scheme

please visit: www.folkestone-hythe.gov.uk/community-safety/safe-space

HI KENT – Reg Charity 1052036 www.hikent.org.uk *The local charity for people with a hearing loss*

Hi Kent provides FREE NHS hearing aid aftercare, advice and battery supply.

The local hearing aid maintenance clinic will be in Coffee & Company in the Durling Hall, Sellindge Village Hall on **Tuesday April 11th from 10.15am to 11.15am.**

INDOOR TABLE TOP SALES – At Sellindge Village Hall 9am to 1pm. – Indoor table top sale **Saturday 1st April** 9am to 1pm many stalls already booked a mix between household stalls and different crafts. Tables are £6 for a 6 foot table. Refreshments are available to purchase.

Plenty of free parking and entry is free. To book or for more information contact Jeanette 07753 283 575.

Next month **Saturday May 13th. PLEASE NOTE CHANGE OF DATE**

COFFEE & COMPANY

We are open to anyone every Tuesday morning in Sellindge Village Hall – 9am to 1pm.

Serving drinks and there might be cake !

Come and meet friends for a chat, make new friends.

SELLINDGE FC UNDER 15’s – 2022/2023

ASHFORD and DISTRICT YOUTH FOOTBALL LEAGUE

Sellindge Sports and Social Club under 15’s have won the League on Saturday March 4th

With a match to go on April 1st, which they also won making their final tally a fantastic

Played 12 Won 11 Drew 1 Lost 0 Final points 34 🏆

The team have some friendlies to look forward to and our presentation evening in June - details to follow



Pos	Team	P	W	D	L	PTS
1	Sellindge Sports & Social Club U15	11	10	1	0	31
2	Rising Stars Youth U15 (Blue)	11	8	1	2	25
3	Kennington Juniors U15 Youth	11	6	0	5	18

THE SELLINDGE SPORTS & SOCIAL CLUB –

Every Sunday – **Roast Dinners,**

please call or text 07876 794 323 to book a table, collection or delivery (in Sellindge) we would hate you to miss out!! Served 1pm till 5pm
Pizza nights Thurs, Fish and Chips, Fri takeaway & local delivery available.
Open 9am Saturdays and Sundays serving Breakfast Rolls & full menu.

Tuesday – Whist Drive – 7.30pm

Wednesday – Youth Club for ages 11 to 16 from 5pm to 7pm

Thursday night BINGO – 8pm

Easter at the Sellindge Sports & Social Club 🍷🍷....

Good Friday we have Fish and chip Friday Open from 12 till late serving food all day.

Easter Sunday we will be doing our super Roast to Eat in, take away and local delivery.
Please do book in advance.

Easter Monday we are open from 12 till 6pm, we will serving food and drinks all day and will have a free Easter egg hunt between 1pm and 3pm, all welcome, give us a little like if your coming 😊😊😊😊😊.
Please feel free to drop us a message on Facebook if you need any more info!



VILLAGE HALL REGULAR EVENTS

MONDAY

RAINBOWS

4pm – 5pm Main Hall - 01303 812 297 (Term time)

BROWNIES

5.15pm – 6.45pm Main Hall - 01303 812 297 (Term time)

LINE DANCING

7.30pm – 9.00pm Main Hall – 07753 274 913

TUESDAY

COFFEE & COMPANY

9am – 1pm Main Hall

LITTLE SELLINDGE SWANS

0 to 4 TODDLER GROUP

1.30pm – 3pm Main Hall

LINE DANCING

6pm – 7pm, 7.15pm – 8.15pm Main Hall – 07989 210 449

PARISH COUNCIL

2nd Tuesday of the month at 6.30pm Durling Hall –
Chair 07710 260 751, Clerk 01303 813 271

WEDNESDAY

GUIDE DOG TRAINING

10am – 12 Noon Main Hall

TAI CHI

2pm – 2.45pm Main Hall

GET TOGETHER CLUB

2nd Wednesday of the month 2pm – 4pm Durling Hall

KARATE

4.30pm – 5.30pm Main Hall 01227 370 055 (office hours)

BEES BODS

5.45pm – 6.45pm Main Hall - 01303 813 274

*****NEW*** FRENCH LANGUAGE COURSES FOR ADULTS – 6.30pm to 7.30pm**

AEROBIC BODY BLAST

7pm – 8pm Main Hall - 01233 820 109

*****NEW*** SPANISH LANGUAGE COURSES FOR ADULTS – 7.30pm to 8.30pm**

ANGEL CENTRE

4th Wednesday of the month 7.30pm – 9.30pm Durling Hall

THURSDAY

PILATES

9.30am – 10.45am Main Hall

LINE DANCING

11.30am - 1.00am Main Hall – 07989 210 449

TAEKWONDO

Various classes from 5.15pm Main Hall 01303 814635

FRIDAY

GARDENERS

3rd Friday of the month 2pm – 4pm Durling Hall 01843 597 710

CUBS – 6pm -7.30pm, BEAVERS – 6pm – 7.15pm, SCOUTS - 7.30-9.00pm,

EXPLORERS 7.30—9pm. 01303 813 250. 1stsellindgesg@gmail.com

OPENING TIMES

Monday 3pm – 7pm

Tuesday 3pm – 9pm

Wednesday 3pm – 9pm

Thursday 3pm – 10pm

Friday 3pm – 11pm

Saturday 9am – 11pm

Sunday 9am – 6pm

Closing times subject to change

STOUR DOWNS PARISH Vicar's letter –

Have you seen a plant or shrub that at the end of winter appeared to be dead come alive with an upsurge of energy in spring?

Sometimes, a subject or activity in which we had no interest can suddenly come alive through the skill, passion or insight shared by a professional.

A landscape that appears bereft of life in season comes alive with a carpet of floral colour.

The metaphor 'to come alive' can include the elements of interest, discovery, mystery, excitement, a change of view, widening horizon, alertness, enrichment. We might ask ourselves, what am I alive to? What excites my mind and ignites me – is it sport, nature, fashion, puzzles, games, food, film...?

The Bible deals with the question of coming alive to God a lot, with many references to the 'living God'. This Easter season we celebrate Jesus being alive. The living God who came in human form in the story that we retold at Christmas, we now proclaim as alive after the resurrection. And in the Bible there are many stories and incidents of a whole range of ordinary people who 'come alive to the living God'.

God is not imprisoned the past, his energy is throbbing in the evolution of the ever expanding universe. Cosmology, ecology, quantum physics are fields of his current activity. God is present. The incarnation is not confined to Christians, it is a daily dynamic wherever his love becomes real in a human being.

Open your eyes today to come alive to God's presence- open the curtains and come alive to his beauty; come alive to the sacredness that lies hidden in everything in your daily routine, in the people we meet, in the ordinary scenes of our surroundings, in serving another.

Come alive to God in the garden and on the news, in silence and the supermarket, in yourself and in others. Come alive to the living God this Easter and beyond.

Blessings

Chris

STOUR DOWNS PARISH – APRIL SERVICES

2 nd	Mersham	9:30am	Palm Sunday Communion
	Brabourne	10.am	Palm Sunday Service
9 th	Stowting	8.am	Easter Sunday Communion
	Stowting	9.30am	Easter Sunday Family Service
	Smeeth	9:30am	Easter Sunday Communion
	Mersham	9.30am	Easter Sunday Communion
	Brabourne	11am	Easter Sunday Communion
	Sellindge	11am	Easter Sunday Communion
16 th	Monks Horton	6pm	Easter Sunday Evensong
	Brabourne	9.30am	Communion
	Mersham	9.30am	Morning Praise
	Smeeth	4pm	Songs of Praise
23 rd	Stowting	9.30am	Communion
	Smeeth	9.30am	Morning Praise
	Monk Horton	6pm	Evensong
30 th	Sellindge	9.30am	Communion

BIG HELP OUT:
ST MARY'S CHURCHYARD
CHALLENGE

Coronation Bank Holiday
Monday 8th May 10am-2pm



Lend a hand.
Make a change.

Do you enjoy gardening and being outdoors?
Make a difference to your churchyard as we clear
the southern aspect to create a new wildlife area
for the community to enjoy.

Doughnuts, tea & coffee provided!

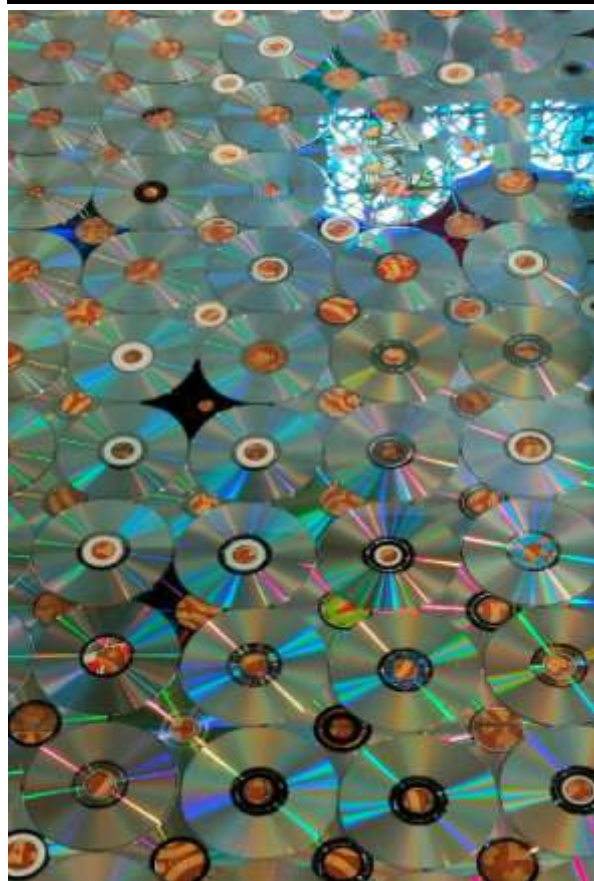
Please contact Rev Chris- 07526688826/ revchrisdenyer@gmail.com

ST MARYS CHURCH SELLINDGE



The Orbit of The Egg

Saturday 25 March - Thursday 18 May
Doors Open daily between 10am - 4pm
St Mary's, Sellindge
admiringly.warthog.intersect



THE ORBIT OF THE EGG

Saturday 25 March – Thursday 18 May 2023

St Mary's, Main Road, Sellindge, Kent -
admiringly.warthog.intersect

An amazing installation *The Orbit of the Egg* made with 2023 CDs can be experienced at St Mary's.

This artwork covers the entire alter floor in a mosaic pattern of disks to reflect colour, light and shadows which change and glow in response to the natural light outside.

Everyone is welcome, just pop in. There is a bus stop outside or use the safe parking inside the cones on the A20.

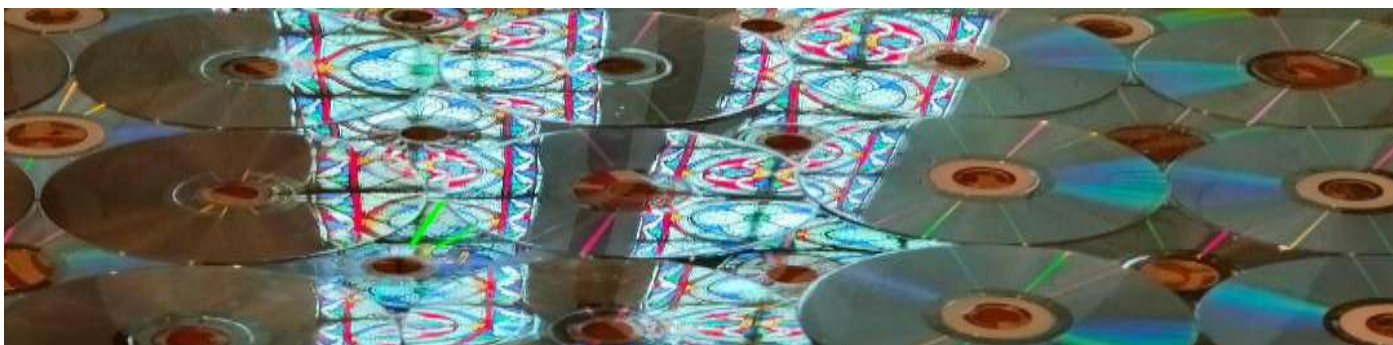
It is on until the 18th of May and will finish along with an exciting display from the 4th of May with portraits of our British Monarchs by the children of Sellindge Primary school to celebrate the Coronation.

The display is by Lorrain Mailer and uses 2023 disks kindly donated by the local community, Webuy.com and charities:

The Lord Whisky Animal Sanctuary / South Kent Mind / Barnardo's / Pilgrims Hospice in Ashford + Furniture Store & in Hythe. Thanks to Justin who daily opens the church.

You are invited to browse and interpret the work, questioning the circular motion of life with the idea that everything in nature should fold into itself. Yet increasingly society is now faced with the reality that as humans we create without due consideration as to how to deconstruct our inventions, like plastic No 7.

Or just come and enjoy the reflections as the light changes.



Disclaimer – The views are the views of those making the submissions and is not necessarily the views of the Editor or Parish Council

Queen II to King III

We need information and would love your help!!

To commemorate Charles III's coronation in May, St Mary's Sellindge is busily preparing to make a wall hanging from the fantastic church kneelers made between 1975-1980.

Do you know anything about them or the people in our community who made them?

These colourful tapestries were originally made by members of Sellindge to commemorate Queen Elizabeth II's silver jubilee. Sadly, over time these tapestries have become dirty, damp and susceptible to moths and now with congregations preferring to bow their heads rather than kneel, these beautiful works of art are at risk of being damaged or lost.

So, to preserve these tapestries, it is proposed to remove the work from the kneelers, clean them and re-sew them onto a strong hessian backing in order to display them around the church.

Would you like to help? Would you like to be a friend of St Mary's and find out about the village's history?

At present one can make out the majority of information sewn on the backs; reference as to who has sewn the tapestry, when and to whom the work is dedicated to but sadly there's a number where information has been lost. There are about 130 ranging from red, blue, green to brown backgrounds with the following surnames that we are able to decipher:

Bamford, Barnes, Barten, Beddy, Binder, Bryant, Buttery, Child, Cloke, Coombes, Daisey, Eastwick, Egan, Filip, Gasson, Godden, Griggs, Hall, Halliwell, Harvey, Hossle, Ibbottson, Jaeger, Jordan, Kenward, Kettle, Liley, Martinez, Mazzetti, Mott, O'Shea, Palmer, Parkinson, Pilcher, Piper, Ralph, Rylands, Small, Starkey, Stichells, Terry, Wetzal, Whittle & Yarnold

If that is your family or friend, do let us know.

You can contact Rev Chris Denyer

01303 761 972 – 07526 688 826 vicar@stourdowns.org.uk

