

SELLINDGE VILLAGE NEWS

SEPTEMBER 2023

Edition 713



SELLINDGE FARMERS & CRAFT MARKET in SELLINDGE VILLAGE HALL

Next Sellindge Farmers & Craft Market is **SUNDAY September 17th** Open at 10am to 1pm.

Check out the Sellindge Farmers & Craft Market Face Book Page for more details.

Community Planning Day

Saturday 9th September
Sellindge Village Hall
11am - 4pm

OTTERPOOL PARK
COUNTRYSIDE · CONNECTED · CREATIVE

Please see back page for more details

SELLINDGE SPORTS & SOCIAL CLUB

Late start boot fairs 2023 – details inside.

Saturdays September 2nd starting at 10am

Weather and ground conditions permitting.

Car £7, Car & trailer or Van £10 – pay at gate.

Refreshments and toilets – Free Parking

Coffee & Company

At Sellindge Village
Hall

Every Tuesday 9-1pm

All are Welcome to call
in for a friendly chat
and a cuppa



Thursdays @ St Mary's Sellindge



Coffee, Tea & Cakes



Parish Foodbank Open

There is a bus stop outside the church or parking available in the lay-by parking area.

INDOOR TABLE TOP SALES –

Sellindge Village Hall 9am to 1pm.

Saturday 2nd September 9am to 1pm

Many stalls already booked a mix between household stalls and different crafts.

Tables are £6 for a 6 foot table.

Refreshments are available to purchase

Plenty of free parking and entry is free.

To book or for more info contact Jeanette 07753 283 575.

Asian Hornet more info inside

With new confirmed sighting in the Dover area during July, still a **very urgent matter!**



CONFIRMED SIGHTING OF AN ASIAN HORNET

Around mid-April there was a confirmed sighting of an Asian Hornet, somewhere in the Folkestone area. Asian Hornets are an invasive species, which pose a threat to Honeybees and other native wildlife.

The British Beekeepers Association are urging the public to be vigilant, and report any sightings the easiest way is to download the Asian Hornet App which is available for Android and iOS phones or online at

www.rise.brc.ac.uk/alert.php?species=asian_hornet

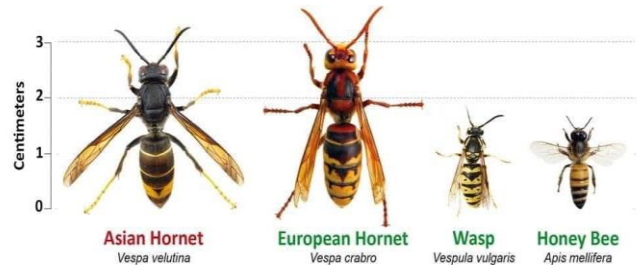
A lot of confirmed sightings and nests being found in the Folkestone and Dover districts the nests have been destroyed.

Also now sighting confirmed in Maidstone and also Whitstable districts.

VERY MUCH A URGENT MATTER !!



Think you've seen an Asian Hornet? Report it!



Report through the Asian Hornet Watch app or www.bit.ly/asianhornetreport



Animal & Plant Health Agency

SELLINDGE PARISH COUNCIL

www.sellindge-pc.gov.uk 01303 813 271 clerk@sellindge-pc.gov.uk

The next meeting of your Parish Council is on Tuesday September 12th starting at 6.30pm in the Durling Hall.
From your Parish Council Clerk Linda Hedley

Dog Poo Bags – Dog poo bags are still available from Nigel at Trust Cottages in Moorstock Lane, he puts them on a patio chair or table outside his house, as does the Chairman who places on the front garden wall if you phone him on his mobile 07710 260 751.

Also now available from the Dog Poo Bag dispenser which is located at the entrance to the Village Green.

MOBILE LIBRARIES DATES and TIMES FOR SEPTEMBER 2023

www.kent.gov.uk/leisure-and-community/libraries/visiting-a-library/mobile-libraries

Lay By on A20 at the bottom of Swan Lane.

Thursdays – 9.15am to 9.45am on September 14th & 28th.

Lay by in Swan Lane at the entrance to Greenfields.

Fridays – 2.50pm to 3.20pm on September 1st, 15th & 29th.



Kent Libraries

HI KENT – Reg Charity 1052036 www.hikent.org.uk *The local charity for people with a hearing loss*
Hi Kent provides FREE NHS hearing aid aftercare, advice and battery supply.

The local hearing aid maintenance clinic will be in Coffee & Company in the Main Hall, Sellindge Village Hall on **Tuesday September 12th from 10.15am to 11.15am.**

SELLINDGE WALKING GROUP

We meet at the Village Hall on a Tuesday morning at approximately 10.20am and set off at 10.30am.

We walk for 1 and 1/2 hours around the village using local footpaths.

This does involve crossing fields and climbing over stiles so appropriate footwear is advisable.

We are no longer part of the NHS Walking for Health Scheme just a group of locals who enjoy walking.

Everyone walks at their own risk.

SELLINDGE GARDENERS ASSOCIATION

The Gardeners meet in the Durling Hall, Sellindge Village Hall on the 3rd Friday of the month, (September 15th) meetings commence at 1.45pm for a 2pm start and end at 4pm.

New members are most welcome.

Teas Coffee & Refreshment, Plant Displays, Competitions, Occasional Talks and Discussions, Quizzes, Coach Outing to Famous Gardens and Raffles. More information contact Valerie Wilton on 01303 814 331.

North Downs West District Councillors' Reports for Sellindge

CLLR JENNY HOLLINGSBEE Contact: jenny.hollingsbee@folkestone-hythe.gov.uk (Conservative)

I recently attended the funeral of Sheila Palmer who as Sheila Osbourne was instrumental in raising funds for the setting-up of Sellindge & District Playing Fields Society back in the late 1960's. She was a very active person in the Village, organising a netball team as well as helping with the Sellindge Steam Special raised many thousands of pounds for local & national charities. My thoughts are with her family at this time.

Ward Grant Application forms and guidance can be found at www.folkestone-hythe.gov.uk/community

The Folkestone Airshow, set-up by the previous administration, was extremely successful with the Red Arrows putting on a magnificent display. There were thousands of people in and around Folkestone and lots of entertainment for all with local businesses feeling the benefit. An excellent event for the District.

The annual canvass of all households in the district is now underway as part of the council's legal requirement to make sure the register is accurate and up to date every year. Residents will either receive an email about this or – if the council does not have an email address – a paper form through the letterbox between now and the end of September. Households should read the instructions carefully as there may not be a need to respond. More info can be read on the council's website.

The possibility of a solar park on land adjoining Otterpool Park is to be explored. The proposed site is on Folkestone & Hythe District Council-owned land in Lympe, south-west of the proposed new settlement. Up to 40% of power demand from Otterpool Park could be met by on-site power generation and storage from solar energy. A soft market testing exercise carried out to explore the benefits of the scheme without entering into any formal commitments.

I have had a number of residents contact me about the continual speeding through the Village. As most residents are aware, this is an ongoing problem which we keep trying to address, particularly in respect of HGV's using the A20 as a short-cut. The Police Speed Check team are currently in the area and have been asked to undertake speed checks through the Village at peak times. We welcome new residents to the Village and if I can help in any way please do contact me.

KCC COUNCILLOR Susan Carey, Elham Valley Ward. susan.carey@kent.gov.uk 01303 670 561

There was a confirmed case of avian flu on a poultry farm in nearby Elham at the end of July. Whilst it's not a disease that's harmful to humans, it's deadly and highly contagious to birds and can spread through wild birds. All the birds on the affected farm have now been humanely slaughtered and there's a 3km protection zone and 10km surveillance zone around the site. KCC staff have been working with DEFRA to alert bird owners to keep their flocks indoors. Please do not touch them, but report any dead birds you see (poultry and captive birds on 03000 200 301 and wild birds on 03459 33 55 77).

Another threat we face in Kent is Asian hornets. As I write, 11 nests have been identified and destroyed in East Kent. They have already established themselves in France where they kill pollinators within a 400m range of their nests. If we can identify and destroy the nests before they hatch their young in October, there's a chance to stop them spreading across the UK. More properly known as the yellow legged hornet, the Asian hornet is bigger than a wasp, has an orangey face, mainly black body, a yellow band on its abdomen and mostly yellow legs. They like warm places such as sheds, garages and BBQs and will set up a small nest and then a secondary larger one. If you spot any, please take a photo and send it to www.nonnativespecies.org The Dover & District Beekeepers Association are leading efforts in Kent to stop this voracious predator and the British Beekeepers Association is leading the national campaign.

Please be careful, as the sting of this hornet can cause a serious reaction.

It's particularly distressing to face this threat to our native pollinators as we have been making progress with Kent's Plan Bee which is a pollinator action plan started by KCC but intended for adoption by other organisations and individuals. Kent's Plan Bee has led to changes in the way the council manages its estate with more land set aside for pollinators. Kent's Plan Bee has recently won a national award from DEFRA been named 'Bees' Needs Champion'.

KCC has several consultations currently under way including the Local Transport Plan for Kent, the Community Warden Service, Domestic Abuse, Family Hubs and (perhaps the most important of all) our 2024/25 budget which is about what level of council tax increase people would support and which services should take priority when we make savings. Best way to take part is to register via www.letstalkkent.gov.uk or you can get a hard copy from a library.

The £6m the Government has allocated to KCC for road repairs is being used to fund six additional contractors and the use of a pothole Promachine which speeds the repairs by improving the initial groundbreaking. This was a topic that came up at the Sellindge Parish Council meeting I attended on 08 August. As I said there, please keep reporting potholes so we get our share of this extra resource for Kent's roads.

The Mayor of London is intent on extending the Inner London Ultra Low Emissions Zone (ULEZ) to Greater London. If you don't have a compliant car, the fee to use London's roads will be £12.50 a day. KCC is concerned about the effect on Kent's residents and has called on the Mayor to meet with us to discuss how to mitigate the impact. Extending the scrappage scheme to Kent's residents would be a start. Until these matters are resolved we are not allowing ULEZ signage or cameras to be erected on Kent's roads.

The issue of Unaccompanied Asylum-Seeking Children (UASC) arriving in Kent continues to be subject to various court cases. Without a satisfactory outcome there is a real risk that the problem could overwhelm KCC's Childrens Services. The arrival of UASC is a national (international) problem and cannot be resolved by KCC alone. I'll provide further updates and I expect widespread media coverage of the issue.

THE SELLINDGE SPORTS & SOCIAL CLUB –

www.sellindgesportsclub.co.uk 

Every Sunday – **NEW SUMMER MENU COMING SOON**

please call or text 07876 794 323 to book a table, collection or delivery (in Sellindge) we would hate you to miss out!! Served 1pm till 5pm

Thurs Pizza nights, **Fri** Fish and Chips, takeaway & local delivery available.

Open 9am Saturdays and Sundays serving Breakfast Rolls & full menu.

Monday – Crafty Crafters – 1.30pm to 3.30pm.

Tuesday – Whist Drive – 7pm

Wednesday – Pilates — 9.30am

Wednesday – Youth Club for ages 11 to 16 from 5pm to 7pm – (Term time only)

Thursday night BINGO – 8pm

Late start Boot Fairs 2023 Weather and ground conditions permitting. **Saturday September 2nd.**

Car £7, Car & trailer or Van £10

Refreshments and toilets – Free Parking.

All Boot Fairs start at 10.am **Please do not arrive early**

CRAFTY CRAFTERS

The Crafty Crafters meet every Monday from 1.30 - 3.30 members bring their own projects, such as knitting, crochet, sewing and paper craft.

You will be assured of a warm welcome with help and advice if required.

A cup of tea and of course a biscuit or two is all part of the session.

SELLINDGE SPORTS & SOCIAL CLUB Under 16's Football Club

The Under 16's Football team 'Kick Off' their 2023 / 2024 season

Fixture list Sept & Oct.

Saturday September 9th Away game Vs Rising Stars U16, Kick Off at 10am.

Saturday September 16th Home game Vs Mersham Sports Club U16, Kick Off at 10am.

Saturday September 23rd Away game Vs Wye Juniors U16 Spitfires Kick Off at 10am.

Saturday October 7th Home game Vs New Romney U16 Kick Off at 10am.

Saturday October 14th Away game Vs SC Pass Move U16 Kick Off at 10am.

Saturday October 21st Home game Vs Total Football Development U16 Kick Off at 10am.

Saturday October 28th Away game Vs Hythe Town U16.

SELLINDGE LADIES FOOTBALL CLUB

Sellindge Ladies Football Club play on a Sunday afternoons at 2pm they compete in the Southeast Kent Women's League in Division one. Fixture list Sept & Oct.

Sunday September 10th Home game Vs Aylesford 2nds Kick Off at 2pm.

Sunday September 17th Away game Vs Betteshanger Welfare Kick Off at 2pm.

Sunday September 24th Home game Vs Kings Hill Kick Off at 2pm.

Sunday October 1st Away game Vs Castle Colts Kick Off at 2pm.

Sunday October 8th SECWFL League Cup Away game Vs Aylesford 2nds Kick Off at 3.30pm.

Sunday October 22nd Away game Vs Faversham Strike Force Kick Off at 2pm.

Sunday October 29th Home game Vs Deal Town. Kick Off at 2pm.

OPENING TIMES

Monday	3pm – 7pm
Tuesday	3pm – 9pm
Wednesday	3pm – 9pm
Thursday	3pm – 10pm
Friday	3pm – 11pm
Saturday	9am – 11pm
Sunday	9am – 6pm
Closing times subject to change	



Village Hall Weekly Events

MONDAY

SUPERSTRIKERS	9.30am -10.30am	Main Hall www.superstrikers.co.uk
RAINBOWS	4pm – 5pm	Main Hall - 01303 812 297 (Term time)
BROWNIES	5.15pm - 6.45pm	Main Hall - 01303 812 297 (Term time)
LINE DANCING	7.30pm – 9pm	Main Hall – 07753 274 913

TUESDAY

COFFEE & COMPANY	9am – 12.30pm	Main Hall
MOTHER & BABY GROUP	1.30pm – 3pm	Main Hall
LINE DANCING	6pm – 7pm, 7.15 – 8.15pm	Main Hall – 07989 210 449

WEDNESDAY

BABY MASSAGE & TUMMY TIME	10am – 12.00 Noon	Durling Hall
BEES BODS	5.45pm – 6.45pm	Main Hall - 01303 813 274
AEROBIC BODY BLAST	7pm - 8pm	Main Hall - 01233 820 109
LANGUAGE CLASSES	6pm – 8pm	Durling Hall

THURSDAY

TINY TALK	10am – 11am	Durling Hall
PILATES	9.30 – 10.45am	Main Hall
LINE DANCING	11.30am - 1am	Main Hall – 07989210449
TAEKWONDO	Various classes from 5.15pm	Main Hall 01303 814 635

FRIDAY

RUGBY TOTS	9.15am – 10.15am	Main Hall
1 st SELLINDGE SCOUT GROUP Both Halls	CUBS - 6 -7.30pm, SCOUTS - 7.30-9.00pm, 01303 813 250. 1stsellindgesg@gmail.com	BEAVERS - 6.00-7.15pm, EXPLORERS 7.30—9.00pm.

Village Hall Monthly Events

TUESDAY

PARISH COUNCIL	2nd Tuesday of the month at 6.30pm Parish Clerk 01303 813 271	Durling Hall –
----------------	--	----------------

WEDNESDAY

GET TOGETHER CLUB	2 nd Wednesday of the month 2pm – 4pm	Durling Hall
-------------------	--	--------------

FRIDAY

GARDENERS	3 rd Friday of the month 2pm – 4pm	Durling Hall
-----------	---	--------------

SATURDAY

TABLE FAIR	1 st Saturday of the month 9am – 1pm	Main Hall
------------	---	-----------

SUNDAY

FARMERS MARKET	3 rd Sunday of the month 10am – 1pm	Main Hall
----------------	--	-----------



Sellindge Village Hall
Halls available for hire.
Meetings, Clubs, Parties,
Wedding receptions etc
01303 813250 sellindgevillagehall@gmail.com



Stour Downs Parish Brabourne, Mersham, Monks Horton, Sellindge, Smeeth & Stowting Churches

Rev Chris Denyer 07526 688 826 / 01303 761 972 / vicar@stourdowns.org.uk

Rev Susan Manners (Curate) 01233 500 414

www.stourdowns.org.uk also on Facebook

STOUR DOWNS PARISH Vicar's letter –

I love this time of year, somehow September always seems like a time for new starts and new things. This seems to be true even if, like me, you left education many years ago. It feels like time of new beginnings or maybe starting again. Many of us are back from holidays or maybe collapsing in a heap once the children go back to school. Although sometimes the weather is lovely there is no denying the nights are beginning to draw in. Many of those around us are starting new schools, new school years, going away to college and university. It feels like it is a time to start again or reset things and the Bible tells us that God's mercy is new every morning and every day we have the opportunity to start again or start something new because in God we are a new creation.

This month in our churches and schools we will be celebrating Harvest. We have prayed throughout the year for a good harvest and we continue to pray that the harvest has been or is being successfully gathered. At our harvest services we will be collecting for our foodbank which helps provide for those in need who live in our parish. You don't have to wait for the harvest service you can deliver food to the church porch in Stowting, Smeeth, Mersham and Sellindge churches at any time. You can also drop into our Thursday coffee and cake at St Mary's Sellindge between 10am and 12 noon to drop off food or collect some or just for a chat over coffee and cake.

We can also deliver food parcels to anyone in need just contact Rev Chris or myself.

God Bless, Susan

STOUR DOWNS PARISH – SEPTEMBER SERVICES

3rd	Mersham	9:30am	Sunday Communion Service and Baptism <i>Live feed</i>
	Brabourne	10.am	Sunday Service Story and Praise
	Monk Horton	6pm	Harvest Evensong
10th	Smeeth	9.30am	Sunday Communion Service with Blessing of the Backpacks
	Stowting	9:30am	Sunday Family Service with Blessing of the Backpacks
	Mersham	4.pm	JAM (Jesus and Me) with Blessing of the Backpacks
17th	Brabourne	9.30am	Sunday Communion
	Mersham	9.30am	Morning Praise
	Smeeth	4pm	Harvest Songs of Praise
24th	Stowting	9.30am	Sunday Harvest Communion
	Smeeth	9.30am	Sunday Morning Praise



OTTERPOOL PARK
COUNTRYSIDE · CONNECTED · CREATIVE

Creating a Vision for Hilltop and Woodland Ridge

JTP architects and masterplanners have been selected to develop the **framework masterplan and design code** for Hilltop and Woodland Ridge neighbourhood area of Otterpool Park.

Upcoming events

Community Planning Day

📅 **Saturday 9 September 11am – 4pm**

📍 **Sellindge Village Hall**

This will encompass a drop in exhibition; a post-it note workshop exploring issues, dreams and solutions; and hands-on planning workshops. At 11.30am, we will host a session for young people to be able to provide their input.

Report Back of the Vision

📅 **Wednesday 20 September 6.30pm – 8pm**

📍 **Westenhanger Castle**

Following the Community Planning Day, JTP will take on board the **feedback** received. Community members and stakeholders will be invited back to **hear and comment** during the Report Back session.



Phase 1b masterplan area



SCAN ME

phase1b.otterpoolpark.co.uk

Share your feedback online

www.otterpoolpark.org    



OTTERPOOL PARK
COUNTRYSIDE · CONNECTED · CREATIVE

Phase 1b is a large phase on the ground to the South of Barrow Hill and comprises 3,000 Homes, 2 Primary School, a Community Centre, Public Open Space.

This is your chance to get involved, give you feedback.

Check the website www.phase1b.otterpoolpark.co.uk or scan the QR code provided.