

SELLINDGE VILLAGE NEWS



MARCH 2024

Edition 719

INDOOR TABLETOP SALES – Sellindge Village Hall 9am to 1pm. **Sat March 2nd** 9am to 1pm

Many stalls already booked a mix between household stalls and different crafts. Tables are £6 a 6 foot table. Refreshments available to purchase. Parking and entry are free. Book/info contact Jeanette 07753 283 575.

Saturdays – Sellindge Village Hall 9am to 1pm.

April 6th – May 4th – June 1st – July 6th – August 3rd – Sept 7th – Oct 5th – Nov 2nd – Dec 7th

SELLINDGE FARMERS & CRAFT MARKET in SELLINDGE VILLAGE HALL

Next Sellindge Farmers & Craft Market is **SUNDAY March 17th** Open at 10am to 1pm. Check out the Sellindge Farmers & Craft Market Face Book Page for more details.



SELLINDGE SPORTS & SOCIAL CLUB – AGM 2024

Sellindge Sports & Social Club will be holding their 2024 AGM in the Clubhouse, in Swan Lane on Monday March 11th at 7pm, everyone is welcome to attend.

Coffee & Company

At Sellindge Village Hall

Every Tuesday 9-1pm

All are Welcome to call in for a friendly chat and a cuppa



Good Friday Walk of Witness

10am on 29th March 2024 at Village Hall Car Park



Walk from the Village Hall car park to St Mary's Sellindge, with reflection and prayer along the way. Hot Cross Buns and drinks in the Church Room afterwards. Lifts back to the car park available!

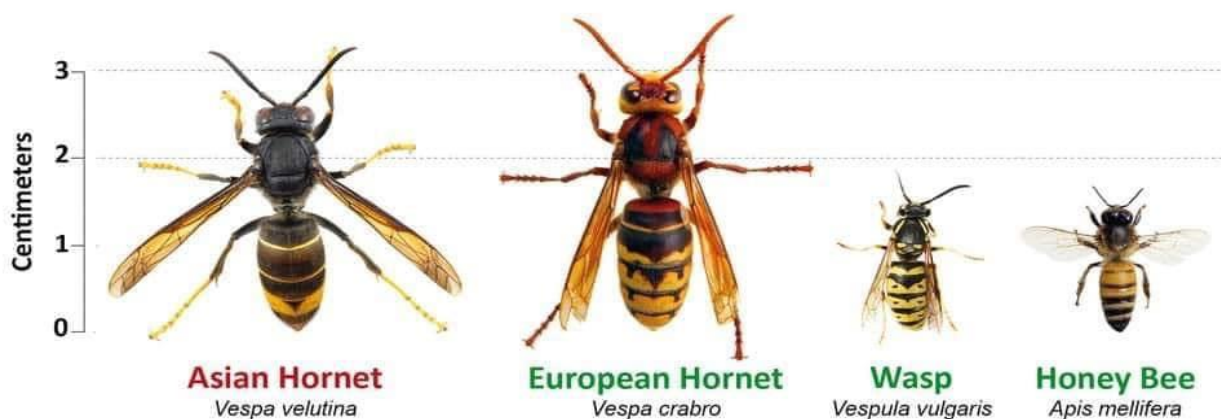
**INDOOR BOOTFAIR
SELLINDGE VILLAGE HALL
TN25 6JX**

**SATURDAY 9TH MARCH
10 AM TIL 1 PM**

**FOR TABLE BOOKINGS
CONTACT
01304 729923
TIMMIGLV@YAHOO.COM**

**HOT FOOD AND DRINKS
AVAILABLE**

Think you've seen an Asian Hornet? Report it!



Report through the Asian Hornet Watch app or www.bit.ly/asianhornetreport



SELLINDGE PC www.sellindge-pc.gov.uk 01303 813 271 clerk@sellindge-pc.gov.uk

The next meeting of your Parish Council is on **Tuesday March 12th** starting at 6.30pm in the Durling Hall. From your Parish Council Clerk Linda Hedley

Dog Poo Bags – Dog poo bags are still available from Nigel at Trust Cottages in Moorstock Lane, he puts them on a patio chair or table outside his house, as does the Chairman who places on the front garden wall if you phone him on his mobile 07710 260 751. Also available from Dog Poo Bag dispenser located at the Village Green Entrance.

MOBILE LIBRARIES DATES and TIMES FOR MARCH 2024

www.kent.gov.uk/leisure-and-community/libraries/visiting-a-library/mobile-libraries

Lay By on A20 at the bottom of Swan Lane.

Thursdays – 9.15am to 9.45am on March **14th & 28th**

Lay by in Swan Lane at the entrance to Greenfields.

Fridays – 2.50pm to 3.20pm on March **1st & 15th**



HI KENT – Reg Charity 1052036 www.hikent.org.uk *The local charity for people with a hearing loss*

Hi Kent provides FREE NHS hearing aid aftercare, advice and battery supply.

The local hearing aid maintenance clinic will be in Coffee & Company in the Main Hall,

Sellindge Village Hall on **Tuesday March 12th** from 10.15am to 11.15am.

Other dates for 2024 –

**April 9th – May 14th – June 11th – July 9th – August 13th –
September 10th – October 8th – November 12th – December 10th**

SELLINDGE WALKING GROUP

We meet at the Village Hall on a Tuesday morning at approximately 10.20am and set off at 10.30am.

We walk for 1 and 1/2 hours around the village using local footpaths.

This does involve crossing fields and climbing over stiles so appropriate footwear is advisable.

We are no longer part of the NHS Walking for Health Scheme just a group of locals who enjoy walking.

Everyone walks at their own risk.

F&HDC NORTH DOWNS WEST WARD

Cllr Jenny Hollingsbee Contact: jenny.hollingsbee@folkestone-hythe.gov.uk (Conservative Party)

Mobile 07887 918 458  @jennyhollingsbee

Sellindge Developments – I am still waiting for FHDC Officers to set a date. As soon as this has been confirmed, it will be published on the Parish Council Website, social media and through other channels.

Police & Crime Panel – At the Meeting on 6 February, it was agreed to support the PCC's proposal to increase the police precept of the council tax by £13 a year or 5.34% for an average Band D property (£1.08 a month or 35p per day). This will maintain the record number of police officers (over 4,000) in the county as well as supporting the New Neighbourhood Policing Model, which is seeing officers deployed to local communities and schools, the PCC has secured funding from the Home Office to deliver extra visible policing in antisocial behaviour and drug hotspots, to help drive crime down.

However, even with this increase the Police budget still needs to find £7.3 million of savings!

The budget meeting held on Wednesday 28 February had to be adjourned for over an hour while protesters were removed from the Gallery. The protest was about the situation in Gaza and one gentleman in particular, refused to sit down or stop shouting and eventually had to be evicted by the police. There was then a debate on the Housing Revenue Account and the Revenue Budget and associated documents. As is required by law, the budget is a balanced budget which has been achieved through better than expected Government funding of just under £1 m and £3.6m of savings, (£2m on staff and £1.6m) on services. Lower inflation and interest rates also contributed. Cuts include reduction in bins across the District, reduced street cleansing in some areas, area officer team reduced, rural verge cutting reduced to once per year, no Air Show for 2024, Tall Ships project (joint with Boulogne) axed and all fees and charges increased. Garden Waste charges will rise from £48 to £60 and collection of bulk items will rise from £35 for one item to £53 for three items. As from 1 April, car parking charges at the Sandgate Road and Coastal Park car parks will be to 9 pm instead of 6 pm. This all results in a Council Tax increase of 2.94% (£280.08 at Band D – an increase of £8.01 on the current charge).

On the housing front, social rents will increase by 7.7% which equates to an increase of £7.37 per week or £390.61 per annum. The budget debate can be accessed via this link [Council - Wednesday 28 February 2024, 7:00pm - Folkestone & Hythe webcasting \(public-i.tv\)](#)

Princes Parade – The Leader of the Council has made a decision to take down the current hoarding and replace with 1.2m stock fencing at a cost of £70,000 with a further £20,000 allocated for contingency and £10,000 allocated for maintenance! Otterpool Park LLP will cover the cost of removing the current hoarding and store it on the Otterpool site for future use.

Otterpool Park LLP – the search continues for a strategic partner and the project team are working hard to maintain momentum on the Garden Town.

Cllr Elaine Martin Contact: Elaine.Martin@folkestone-hythe.gov.uk (Green Party)

F&HDC, in its response to KCC's consultation, has asked that that the potential sale of the eight windmills it owns and maintains, including the Davison Mill in Stelling Minnis, be delayed to enable local groups to potentially raise money to buy the historic landmarks and maintain them into the future. The Trustees of the Davison Mill have applied to have the windmill listed as an Asset of Community Value and should hear in the next few weeks if it has been agreed.

It is the time of year to start thinking about Asian Hornets again. The Asians Hornets have been hibernating for the winter and producing queens. Once the outside temperature hits 12 degrees for two or more consecutive days the queens will wake up, look for food and fly off to start a new nest. Please report any sightings at once either by using the Asian Hornet Watch App or by emailing alertnonnative@ceh.ac.uk

Although the final details are yet to be published, it appears very likely F&HDC will be reporting a balanced budget. This has been achieved without drawing from reserves. Many councils in Kent and nationally are struggling to report a balanced budget and the members and staff have worked extraordinarily hard to achieve this remarkable fete.

The Council has launched The Excellence in Volunteering Awards Folkestone and Hythe District, run by Kent Coast Volunteering on their behalf.

Details can be found at <https://www.kcv.org.uk/folkestone-and-hythe-volunteering-awards-2024>

KCC COUNCILLOR Susan Carey, Elham Valley Ward. susan.carey@kent.gov.uk 01303 670 561

At the eleventh hour the Government gave Councils responsible for social care an extra £500m funding. KCC's share of this was £12.8m which is very welcome. However, it did not come close to bridging the £118m gap between our income and expected expenditure for the year ahead so savings are still needed as well as a 5% rise in the KCC part of your Council Tax. Our most significant problems continue to be the cost of care for the elderly and the number of children with Special Educational Needs and associated school transport costs.

The budget was agreed at a full day meeting of the County Council on 19 February. The papers for the meeting and a webcast of the debate are on the KCC website www.kent.gov.uk. The Labour Group, Liberal Democrats, Greens and Independents all put forward amendments to make small changes to spending but their proposals also all involved a 5% increase. None of the amendments were accepted (one involved opening a bar in County Hall to make money!) The budget that was passed has increased spending on adult social care, children in care and home to school transport in line with demand.

For those who have difficulty in paying their Council Tax it's worth looking at the various schemes to help those on low incomes and there are discretionary funds to help those in hardship. Most of the schemes are funded from specific grants from the Government (i.e. we can only spend the funding this way). Some of these grants are passed on to the district councils or voluntary organisations to reach those in need. A good place to find out about these is the KCC website www.kent.gov.uk where there is a link on the homepage to 'Kent Together – cost of living support'. The schemes include financial help, provision of household goods, IT equipment and training and support with mental health. 'Release the Pressure' offers free expert advice from trained counsellors and is available 24/7 on 0800 107 0160.

KCC libraries have partnered with the Institute of Accountants and Bookkeepers to provide a one hour 'managing your finances course' which covers setting a household budget, understanding your payslip, how to reduce your living costs, understand loan repayments and access financial support.' The course is available on the free public computers in the libraries or via a QR code to a smartphone.

Last November, KCC launched a recycling scheme for IT equipment, and I'm pleased to report that I've had some very positive feedback from those using it. It covers equipment such as PCs, laptops, printers and mobile phones and either refurbishes and reuses them or ensures they are recycled. A specialist process is used to ensure 100% data wiping to the strictest UK legislative standards. You can book a home collection at www.kent.gov.uk/DeviceRecyclingScheme.

KCC has been stepping up its campaign for the Government to make more preparations for the proposed introduction of the new EU Entry Exit System (EES) from 06 October 2024. EES will replace stamping passports with an electronic system to register the dates of entry and exit by non-EU travellers and is similar to systems already in operation in the USA, Canada and Australia. On 31 January Roger Gough, KCC's leader, told Parliament's EU Scrutiny Committee that traffic modelling showed a worst-case scenario of delays of up to 14 hours at the ports and Eurotunnel. Roger called for funding for measures to cope with the change. He pointed out that delays in Kent impact the whole UK economy and urged the Government to look at technological and legal changes to enable remote registration. Roger recently visited the Eurotunnel terminal where £80m of investment is being made to ensure traffic is not delayed by the new system.

Well done Eurotunnel but more needs to be done by all those involved in cross Channel traffic.

I made my first visit to the Farmers Market held every third Sunday of the month in Sellindge Village Hall and was impressed by the quality of the goods for sale. Do try it yourself and support both local farmers and your village hall.

Susan Carey, KCC Member for Elham Valley



SELLINDGE
SPORTS & SOCIAL CLUB

ANNUAL EASTER EGG HUNT

MONDAY 1st APRIL
2pm - 4pm
FREE

Includes a Free Easter Egg

Indoor Activities & Kids Disco

Booking Only

0787694323
Sellindge Sports & Social Club

THE SELLINDGE SPORTS & SOCIAL CLUB –

www.sellindgesportsclub.co.uk 

Every Sunday – **The Sunday Roast**

please call or text 07876 794 323 to book a table, collection or delivery (in Sellindge) we would hate you to miss out!! Served 1pm till 5pm

Thurs Pizza nights, **Fri** Fish and Chips, takeaway & local delivery available.

Open 9am Saturdays and Sundays serving Breakfast Rolls & full menu.

Monday – **Crafty Crafters** – **1.30pm to 3.30pm.**

Tuesday – **Whist Drive** – **7pm**

Wednesday – **Pilates** — **9.30am**

Wednesday – **Youth Club** for ages 11 to 16 from 5pm to 7pm – (Term time)

Thursday – **night BINGO** 8pm

OPENING TIMES

| | |
|-----------|------------|
| Monday | 3pm – 7pm |
| Tuesday | 3pm – 9pm |
| Wednesday | 3pm – 9pm |
| Thursday | 3pm – 10pm |
| Friday | 3pm – 11pm |
| Saturday | 9am – 11pm |
| Sunday | 9am – 6pm |

Closing times subject to

SELLINDGE SPORTS & SOCIAL CLUB Under 16's Football Club

The Under 16's Football team 2023 / 2024 season. Fixture list March 2024.

Saturday March 2nd – Home V Mersham – **KO 10am** – Under 16 Cup.

Saturday March 9th – Home V Total Football Development – **KO 10am**

Saturday March 16th – Home V Park Farm Rangers u16 – **KO 10am**

Saturday March 23rd – Home V Wye u16 Spitfires – **KO 10am**



SELLINDGE LADIES FOOTBALL CLUB

Sellindge Ladies Football Club play on a Sunday afternoon at 2pm they compete in the Southeast Kent Women's League in Division one.

Fixture list March 2024.

Sunday March 3rd – Away V Deal Town – **KO 2pm**

Sunday March 24th – Home V Sheppy utd – **KO 2pm**

Sellindge Ladies Football Club Development Team, play on a Sunday afternoon at 2pm they compete in the Southeast Kent Women's League in Division two.

Fixture list March 2024

Sunday March 3rd – Home V Margate – **KO 2pm**

Sunday March 17th – Away V Betteshanger – **KO 2pm**

Sunday March 24th – Away V Canterbury – **KO 2pm**



Village Hall Weekly Events

MONDAY

| | | |
|---------------|-----------------|--|
| SUPERSTRIKERS | 9.30am -10.30am | Main Hall www.superstrikers.co.uk |
| RAINBOWS | 4pm – 5pm | Main Hall - 01303 812 297 (Term time) |
| BROWNIES | 5.15pm - 6.45pm | Main Hall - 01303 812 297 (Term time) |
| LINE DANCING | 7.30pm – 9pm | Main Hall – 07753 274 913 |

TUESDAY

| | | |
|---------------------|--------------------------|---------------------------|
| COFFEE & COMPANY | 9am – 12.30pm | Main Hall |
| MOTHER & BABY GROUP | 1.30pm – 3pm | Main Hall |
| LINE DANCING | 6pm – 7pm, 7.15 – 8.15pm | Main Hall – 07989 210 449 |

WEDNESDAY

| | | |
|---------------------------|-------------------|---------------------------|
| BABY MASSAGE & TUMMY TIME | 10am – 12.00 Noon | Durling Hall |
| BEES BODS | 5.45pm – 6.45pm | Main Hall - 01303 813 274 |
| AEROBIC BODY BLAST | 7pm - 8pm | Main Hall - 01233 820 109 |
| LANGUAGE CLASSES | 6pm – 8pm | Durling Hall |

THURSDAY

| | | |
|--------------|-----------------------------|-------------------------|
| TINY TALK | 10am – 11am | Durling Hall |
| PILATES | 9.30 – 10.45am | Main Hall |
| LINE DANCING | 11.30am - 1am | Main Hall – 07989210449 |
| TAEKWONDO | Various classes from 5.15pm | Main Hall 01303 814 635 |

FRIDAY

| | | |
|---------------------------------------|---|--|
| RUGBY TOTS | 9.15am – 10.15am | Main Hall |
| 1 st SELLINDGE SCOUT GROUP | CUBS - 6 -7.30pm, SCOUTS - 7.30-9.00pm, 01303 813 250. 1stsellindgesg@gmail.com (Term time) | BEAVERS - 6.00-7.15pm, EXPLORERS 7.30—9.00pm. |

Both Halls

Village Hall Monthly Events

TUESDAY

| | | |
|----------------|--|----------------|
| PARISH COUNCIL | 2nd Tuesday of the month at 6.30pm Parish Clerk 01303 813 271 | Durling Hall – |
|----------------|--|----------------|

WEDNESDAY

| | | |
|-------------------|--|--------------|
| GET TOGETHER CLUB | 2 nd Wednesday of the month 2pm – 4pm | Durling Hall |
|-------------------|--|--------------|

FRIDAY

| | | |
|----------------|--|--------------|
| WEIGH and PLAY | 8 th and 22 nd February 10am | Durling Hall |
|----------------|--|--------------|

SATURDAY

| | | |
|---------------|---|-----------|
| TABLETOP FAIR | 1 st Saturday of the month 9am – 1pm | Main Hall |
|---------------|---|-----------|

SUNDAY

| | | |
|----------------|--|-----------|
| FARMERS MARKET | 3 rd Sunday of the month 10am – 1pm | Main Hall |
|----------------|--|-----------|



Sellindge Village Hall
Halls available for hire.
Meetings, Clubs, Parties,
Wedding receptions etc
01303 813250 sellindgevillagehall@gmail.com



STOUR DOWNS

Smeeth Mersham Brabourne Monks Horton Stowting Sellindge

Stour Downs Parish Brabourne, Mersham, Monks Horton, Sellindge, Smeeth & Stowting Churches

Rev Chris Denyer 07526 688 826 / 01303 761 972 / vicar@stourdowns.org.uk

Rev Susan Manners (Curate) 01233 500 414

www.stourdowns.org.uk also on Facebook

STOUR DOWNS PARISH Vicar's letter –

As March arrives, we look forward to the coming of Spring. This year it seems that many of the joyful signs of its arrival have come early, with daffodils from early February – perhaps the flora and fauna got wind that this year we have a very early Easter! Yes, this month ends with the joyful celebration of Easter – on the very last day of March.

This Holy Week we have our Good Friday walk at Sellindge – although with a twist: meeting at the Village Hall car park at 10am and walk up to the church, finishing with Hot Cross Buns and a hot drink in our newly refreshed space at the Church Rooms (just up the churchyard path) where we meet on a Thursday morning for coffee, cake and soup. All are invited! Also have an Easter Day Communion service at St Mary's at 8am.

On our journey towards Easter, we encounter Mothering Sunday, on March 10th, giving thanks for mothers past and present, including those who have been mother figures in our lives.

Thinking about signs of Spring, the festival of Easter and Mothering Sunday, this year March is a month very much about new life. We can see new life in the spring flowers that brighten our village, the lambs in the fields, and there's always lots of new creatures around our beautiful churchyard. As we remember mothers and those who have been like mothers to us, we give thanks for the life they have given us and to others. And when we reach Easter, if we go beyond the chocolate and think of its true meaning, then we find the amazing story of the new life that comes through Jesus' Resurrection.

I wonder where there might be new life for you at the moment? Perhaps it is in taking up something new, a new adventure, or in letting something go to find space for something new. Maybe you have been blessed with the joy of new life in the family or welcomed home some "furry" new life?!

I hope you get to enjoy spotting the signs of new life around us in our beautiful environment and it would be lovely to share in giving thanks for new life at one of our services.

With blessings
Chris

Services in the Stour Downs

March 2024

| | | | | | | |
|--|--|---|---|--|---|--|
| 3rd March | Mersham 9:30am Communion <i>Live-Stream</i> | Brabourne 10am Story & Praise | Monks Horton 4pm Evensong | | | |
| 10th March Mothering Sunday | Smeeth 9:30am Communion <i>Live-Stream</i> | Stowting 9:30 Family Service | Mothering Sunday family service Mersham 9:30am | | | |
| 17th March | Brabourne 9:30am Communion | Mersham 9:30am Morning Praise | Smeeth 4pm Songs of Praise | | | |
| 24th March Palm Sunday | Stowting 9.30am Communion | Smeeth 9:30am <u>Morning Praise</u> | Brabourne Palm Sunday Parade 10am | | | |
| 31st March Easter Sunday | Sellindge 8am Easter Communion | Mersham 9:30am Easter Communion | Smeeth 9:30am Easter Communion | Brabourne 11am Easter Communion | Stowting 11am Easter Communion | Monks Horton 6pm Easter Evensong |

Midweek Communion

| | |
|---|------------------|
| Wednesday 6 th , 13 th , 20 th , 27 th March* (27 th March – Holy Week – *at 10:30am) | Brabourne 9:30am |
|---|------------------|

Holy Week

| | | | |
|--|--|--|---|
| 28th March Maundy Thursday 7pm Maundy Thursday Service Stowting | 29th March Good Friday 10am Walk of Witness Sellindge | 29th March Good Friday 3pm Hour at the Cross Smeeth | 30th March 10am-12pm Easter Egg Hunt Mersham |
|--|--|--|---|

Thursday Coffee & Cake Soup Lunches



**10am-12pm
St Mary's Church
Room**

**Follow the path through the
churchyard and follow the sign to find
the refreshed St Mary's Church Room!**