

SELLINDGE VILLAGE NEWS



April 2024

Edition 720

INDOOR TABLETOP SALES – Sellindge Village Hall 9am to 1pm. **Sat April 6th** 9am to 1pm

Many stalls already booked a mix between household stalls and different crafts. Tables are £6 a 6 foot table. Refreshments available to purchase. Parking and entry are free. Book/info contact Jeanette 07753 283 575. Saturdays – Sellindge Village Hall 9am to 1pm.

May 4th – June 1st – July 6th – August 3rd – Sept 7th – Oct 5th – Nov 2nd – Dec 7th

SELLINDGE FARMERS & CRAFT MARKET in SELLINDGE VILLAGE HALL

Next Sellindge Farmers & Craft Market is **SUNDAY April 21st** Open at 10am to 1pm. Check out the Sellindge Farmers & Craft Market Face Book Page for more details.



Saturday 13th April
Sellindge Village Hall, 9am – 5pm
Refreshments Provided!
Message us to let us know if you could offer your time.

Your Village hall needs your help!

We are organising a big spring clean event at the hall to help with weeding, cleaning outside, cleaning inside, painting and DIY jobs. We would love your help, even if you could just offer an hour of your time to help us.

We Need Your Help



Easter Craft Fair
1st April
Bank Holiday Monday 12-4
Sellindge village hall
Come and meet the Easter Bunny, take part in an Easter egg hunt and take a Selfie with our Easter backdrop.
Handmade crafts and gifts available.

Thursday Coffee & Cake Soup Lunches



10am-12pm

**St Mary's Church
Room**

Follow the path through the churchyard and follow the sign to find the refreshed St Mary's Church Room!

SELLINDGE
SPORTS & SOCIAL CLUB

ANNUAL EASTER EGG HUNT

MONDAY 1st APRIL
2pm - 4pm
FREE

Includes a Free Easter Egg

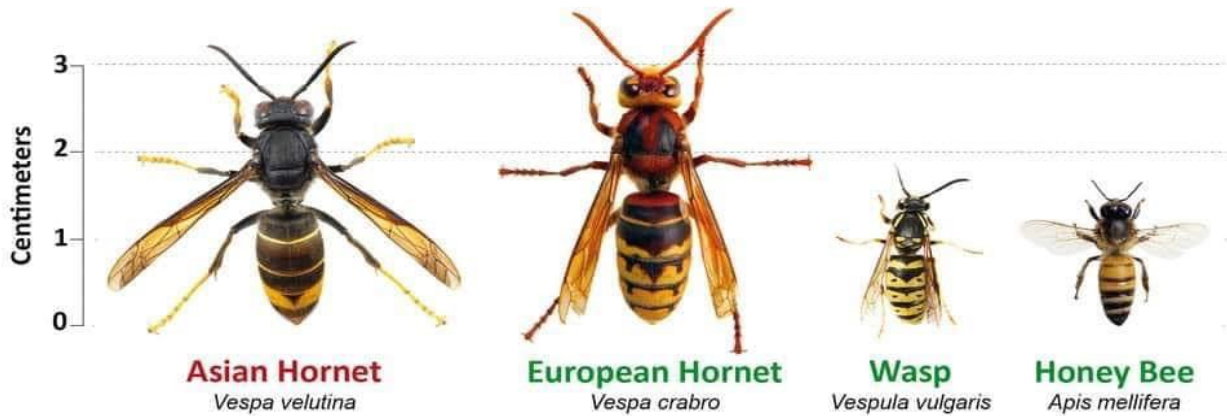
Indoor Activities & Kids Disco

Booking Only

0787694323
Sellindge Sports & Social Club

Provisional date for Planning Public Meeting is Thursday 18 April at 6 pm. Venue to be confirmed

Think you've seen an Asian Hornet? Report it!



Report through the Asian Hornet Watch app or www.bit.ly/asianhornetreport



So far there has been one sighting this year at Ash, near Canterbury – so please keep a look out !

SELLINDGE PC www.sellindge-pc.gov.uk 01303 813 271 clerk@sellindge-pc.gov.uk

The next meeting of your Parish Council is on **Tuesday April 9th** starting at 6.30pm in the Durling Hall. From your Parish Council Clerk Linda Hedley

Dog Poo Bags – Dog poo bags are still available from Nigel at Trust Cottages in Moorstock Lane, he puts them on a patio chair or table outside his house, as does Cllr Bull who places on the front garden wall, in Swan Lane if you phone him on his mobile 07710 260 751.

Also available from Dog Poo Bag dispenser located at the Village Green Entrance.

MOBILE LIBRARIES DATES and TIMES FOR APRIL 2024

www.kent.gov.uk/leisure-and-community/libraries/visiting-a-library/mobile-libraries

Lay By on A20 at the bottom of Swan Lane.

Thursdays – 9.15am to 9.45am on April **11th & 25th**

Lay by in Swan Lane at the entrance to Greenfields.

Fridays – 2.50pm to 3.20pm on April **12th & 26th**

HI KENT – Reg Charity 1052036 www.hikent.org.uk

The local charity for people with a hearing loss

Hi Kent provides FREE NHS hearing aid aftercare, advice and battery supply. The local hearing aid maintenance clinic will be in Coffee & Company in the Durling Hall, Sellindge Village Hall on **Tuesday April 9th** from 10.15am to 11.15am. Dates for 2024

**May 14th – June 11th – July 9th – August 13th –
Sept 10th – Oct 8th – Nov 12th – Dec 10th**

SELLINDGE WALKING GROUP

We meet at the Village Hall on a Tuesday morning at approximately 10.20am and set off at 10.30am.

We walk for 1 and 1/2 hours around the village using local footpaths. This does involve crossing fields and climbing over stiles so appropriate footwear is advisable.

We are no longer part of the NHS Walking for Health Scheme just a group of locals who enjoy walking. Everyone walks at own risk.



Sellindge Developments – A provisional date for the Planning Public Meeting is Thursday 18 April at 6 pm. Further details will be published in due course.

Pent Solar Farm Postling – The planning application for the Solar Park was discussed at the Planning & Licensing Committee on 19 February. The application was refused by 7 votes to 4 for the following reason – “The proposals would result in a detrimental change to the quality of the strategic landscape, failing to conserve and enhance the character of the North Downs National Landscape. This would result in significant harm to the visual character of the area and thus impact on the enjoyment of the area by receptors using the local public rights of way. The proposed mitigation is insufficient to overcome these harms.”

Otterpool Park – Talks are continuing with Homes England and other Government Agencies on how the project will move forward. The inevitable delay in delivery of the project means that the District Council will find it difficult to meet its housing target. The Leader has confirmed that this year there will be a ‘call for sites’ to allow the council to create the five year land supply line as required by Government.

My Community Voice – [Home Page - My Community Voice Kent](#) - is a messaging service that helps Kent and Medway residents, businesses, and community groups to keep in touch with their local policing teams. The service sends updates about your local area directly from the police officers themselves. It is more than just a messaging service; it allows you to reply to the alerts the Police send you, share information and tell them about the issues affecting you. It also keeps you informed of current scams.

Folkestone – what an accolade for our Town to be crowned the best place to live in the south east of England by the Sunday Times. The judges talk about our “eye-catching culture-led regeneration”. They praised our “artists’ studios, the cool shops on the Old High Street and the Harbour Arm.

The judges noted the town’s “impressive schools, state-of-the-art sports facilities, high-speed trains to London”.

Levelling-up Fund – In January 2023, under the previous Administration, the Department of Levelling Up, Housing and Communities announced the Council’s funding bid was successful and £19.8m was awarded. Our plan - A Brighter Future - will breathe new life into Folkestone and radically improve the complicated road network, making it much easier for residents and visitors to access the town centre: preliminary grounds investigations are due to begin later this month and all work completed by March 2025. For further details [Folkestone Levelling Up - Public engagement November 2023 | Folkestone & Hythe District Council \(folkestone-hythe.gov.uk\)](#)

Last month I attended the Parish Council, the Patients Participation Group, the AGM of Sellindge Sports & Social Club and the Governor Monitoring Day at Sellindge Primary School.

Cllr Elaine Martin Contact: Elaine.Martin@folkestone-hythe.gov.uk (Green Party)

At the meeting of the Full Council on 28th February, a fully costed and balanced budget for 2024/25 was approved. As expected, the Council Tax will increase, the F&HDC proportion of it is increasing by 2.99%. Other precepts will be determined by KCC, Kent Police and Crime Commissioner, Kent Fire and Rescue Service and Town/Parish Councils. The budget includes £18 million to be spent on front line services such as waste collection, quality social housing and other community-based services. The Housing Revenue Account budget was also approved and unfortunately rents will be increasing by 7.7%. This is in line with the Government recommendations. The extra money will enable the council to continue with the maintenance of its properties and allow us to build more social housing in the District. I know that these increases come at a very bad time with the ongoing cost of living crisis. Please check the Council’s website for details of help and support that can be provided if you are affected by this.

Consultation on The Folkestone – A Brighter Future Phase 3 project is open until 2nd April. Details of this phase can be found at <https://www.folkestone-hythe.gov.uk/luf-public-engagement-Mar24>. Your views are important to the development. The scheme has been updated after each of the previous consultations based on feedback from public.

As I have reported previously, the constituency boundaries for the next General Election have changed. North Downs West will now come under the Ashford constituency for General Elections only. For all other elections, administration, you’ll still be in Folkestone & Hythe District Council and Kent County Council.

There have been several landslides along the Folkestone part of the coast and the Road of Remembrance remains shut. F&HDC have completed the works they are responsible for: all shrubs and sycamore trees were removed, and 12 evergreen oak trees were coppiced to form a low hedge. We are now awaiting a drone survey to be carried out along the escarpment and an assessment will be made to see if any other works need to be carried out. The road remains closed whilst KCC arranges clearance of the fallen trees. KCC are unable to commence work until they know that it is safe for their operatives to access the road.

KCC COUNCILLOR Susan Carey, Elham Valley Ward. susan.carey@kent.gov.uk 01303 670 561

The KCC budget was agreed at a full day meeting of the County Council on 19 February. The papers for the meeting and a webcast of the debate are on the KCC website www.kent.gov.uk. Various amendments were put forward to make minor changes, but all accepted a 5% increase (3% unrestricted and 2% dedicated to social care). The budget that was passed has increased spending on adult social care, children in care and home to school transport in line with demand.

KCC's campaign continues for more to be done in preparation for the new EU Entry Exit System (EES) which is expected to start on 06 October. The change has the potential to cause major disruption to our roads in Kent and this can be mitigated if the Government allows more of the checking to be done in advance. A report on this issue went to KCC's Environment and Transport Cabinet Committee 07 March and KCC's Cabinet, 21 March - read the report and watch the debates on the KCC website www.kent.gov.uk

Another current campaign is the one to restore the Kent stops for Eurostar services. There is a petition on this which has nearly reached 50,000 signatures. If you'd like to support it you can sign the [online petition](#). KCC has also surveyed Kent businesses and found strong support for the reintroduction of the Kent stops. I know Damian Green MP, Ashford Borough Council and KCC are all involved in the campaign to persuade Eurostar to restore the services.

KCC has launched a Biodiversity Net Gain Site Register for Kent. Since 12 February all developments with over ten houses are required to deliver a 10% increase in biodiversity. The aim is for this improvement to be delivered on the site itself but if this is impractical then the site register will provide a pipeline of suitable land to deliver this commitment. The Making Space for Nature Kent website has more details on this.

Do please keep reporting potholes preferably on the KCC website or to 03000 41 81 81. Nearly 60,000 potholes were repaired on Kent's roads between April and December 2023 and the work continues. The Government has allocated Kent £135m of additional funding over the next 11 years for road repairs. £8.6m of this will be spent between March and October this year. This is on top of the £50m in KCC's own road and footway maintenance budget. Reporting by residents helps identify where the work is most needed and is best done online at www.kent.gov.uk

I attended Stelling Minnis Parish Council on 13 March and was asked about the timetable for the decision about ownership of KCC's 8 heritage windmills. The consultation ran from 28 November 2023 to 29 January 2024 and received over 2,000 responses. A report on the responses is being collated and is expected to go to the Environment & Transport Cabinet Committee on 21 May (the papers for the meeting are normally available on the council website a month in advance).

After this meeting KCC's Cabinet Member for Environment is able to take a decision.



Holiday Tennis Coaching at Sellindge Tennis Club is back ! Our LTA qualified team will lend your child through a fun week of learning and playing tennis.

Book now at www.adtennis.co.uk or message us with any questions.

#tennis #holidayactivities

#learningthroughplay #holidayactivity

[www.nickskelton/advantage tennis ltd \(lta.org.uk\)](http://www.nickskelton/advantage tennis ltd (lta.org.uk))

Our new membership package for 2024 are now available. Click on the link for more info:

<https://clubspark.lta.org.uk/SellindgeTennisClub>

Go to the Sellindge Sports and Social club website

www.sellindgesportsclub.co.uk

For details of the Tennis Club and the other clubs in the village like The football teams, the Bowls Club and various other activities.



JOIN US FOR
BINGO
BINGO
BINGO
15 25 45 37 17
DRAG BINGO
SATURDAY 20TH
APRIL
DOORS OPEN AT 8PM
SELLINDGE VILLAGE HALL
£15 PER TICKET
LICENSED BAR
RAFFLE & DABBERS AVAILABLE TO PURCHASE

THE SELLINDGE SPORTS & SOCIAL CLUB –

www.sellindgesportsclub.co.uk 

Every Sunday – **The Sunday Roast is back !!!**

please call or text 07876 794 323 to book a table, collection or delivery (in Sellindge) we would hate you to miss out!! Served 1pm till 5pm

Thurs Pizza nights, **Fri** Fish and Chips, takeaway & local delivery available.

Open 9am Saturdays and Sundays serving Breakfast Rolls & full menu.

***** NEW MENUS OUT SOON *check website for details*****

Monday – Crafty Crafters – 1.30pm to 3.30pm.

Tuesday – Whist Drive – 7pm

Wednesday – Pilates — 9.30am – Youth Club for ages 11 to 16 from 5pm to 7pm – (Term time)

Thursday – night BINGO 8pm

SELLINDGE SPORTS & SOCIAL CLUB Under 16's Football Club

The Under 16's Football team 2023 / 2024 season. Fixture list April 2024.

Saturday April 6th – Home V Hythe Town Youth – **KO 10am.**

Saturday April 20th – Home V Wye under 16 – **KO 10am**

SELLINDGE LADIES FOOTBALL CLUB

Sellindge Ladies Football Club play on a Sunday afternoon at 2pm they compete in the Southeast Kent Women's League in Division one. Fixture list April 2024.

Sunday April 7th – Away V Betteshanger – **KO 2pm**

Sunday April 21st – Away V Deal – **KO 2pm**

Sellindge Ladies Football Club Development Team, play Sunday afternoon 2pm compete in Southeast Kent Women's League in Division two. Fixture list April 2024

Sunday April 7th – Away V Betteshanger – **KO 2pm**

Sunday April 14th – Home V Betteshanger – **KO 2pm**

Sunday April 21st – Home V Canterbury – **KO 2pm** Sunday April 28th – Home V Ramsgate – **KO 2pm**

OPENING TIMES

Monday	3pm – 7pm
Tuesday	3pm – 9pm
Wednesday	3pm – 9pm
Thursday	3pm – 10pm
Friday	3pm – 11pm
Saturday	9am – 11pm
Sunday	9am – 6pm

Closing times subject to change



SELLINDGE BOOT FAIRS 2024

Sat 25th May – Sat 15th June

Sat 13th July – Satt 17th August

**CAR -£7 CAR AND TRAILER OR VAN -£10
STARTS AT 10 AM**

All dates subject to weather.



Village Hall Weekly Events

MONDAY

SUPERSTRIKERS	9.30am -10.30am	Main Hall www.superstrikers.co.uk
RAINBOWS	4pm – 5pm	Main Hall - 01303 812 297 (Term time)
BROWNIES	5.15pm - 6.45pm	Main Hall - 01303 812 297 (Term time)
LINE DANCING	7.30pm – 9pm	Main Hall – 07753 274 913

TUESDAY

COFFEE & COMPANY	9am – 12.30pm	Main Hall
MOTHER & BABY GROUP	1.30pm – 3pm	Main Hall
LINE DANCING	6pm – 7.30pm,	Main Hall – 07989 210 449

WEDNESDAY

BABY MASSAGE & TUMMY TIME	10am – 12.00 Noon	Durling Hall
BEES BODS	5.45pm – 6.45pm	Main Hall - 01303 813 274
AEROBIC BODY BLAST	7pm - 8pm	Main Hall - 01233 820 109
LANGUAGE CLASSES	6pm – 8pm	Durling Hall

THURSDAY

TINY TALK	10am – 11am	Durling Hall
PILATES	9.30 – 10.45am	Main Hall
LINE DANCING	12 Noon – 1.30pm	Main Hall – 07989 210 449
TAEKWONDO	Various classes from 5.15pm	Main Hall – 01303 814 635

FRIDAY

RUGBY TOTS	9.15am – 10.15am	Main Hall
1st SELLINDGE SCOUT GROUP	CUBS - 6 -7.30pm, SCOUTS - 7.30-9.00pm,	BEAVERS - 6.00-7.15pm, EXPLORERS 7.30—9.00pm.
Both Halls	01303 813 250. 1stsellindgesg@gmail.com (Term time)	

Village Hall Monthly Events

TUESDAY

PARISH COUNCIL	2nd Tuesday of the month at 6.30pm Parish Clerk 01303 813 271	Durling Hall –
-----------------------	--	-----------------------

WEDNESDAY

GET TOGETHER CLUB	2 nd Wednesday of the month 2pm – 4pm	Durling Hall
--------------------------	--	---------------------

FRIDAY

WEIGH and PLAY	5 th and 19 th April	10am	Durling Hall
-----------------------	--	------	---------------------

SATURDAY

TABLETOP FAIR	1 st Saturday of the month 9am – 1pm	Main Hall
----------------------	---	------------------

SUNDAY

FARMERS MARKET	3 rd Sunday of the month 10am – 1pm	Main Hall
-----------------------	--	------------------



Sellindge Village Hall

Halls available for hire.
Meetings, Clubs, Parties,
Wedding receptions etc

01303 813250 sellindgevillagehall@gmail.com



Stour Downs Parish Brabourne, Mersham, Monks Horton, Sellindge, Smeeth & Stowting Churches

Rev Chris Denyer 07526 688 826 / 01303 761 972 / vicar@stourdowns.org.uk

Rev Susan Manners (Curate) 01233 500 414

www.stourdowns.org.uk also on Facebook

STOUR DOWNS PARISH Vicar's letter –

I love April, it feels like coming out of the cocoon of winter the evenings are lighter after the clocks change and it is hopefully a bit warmer. The sense of spring and the new life it brings I find an absolute joy.

April was also my Mum's birthday and Shakespeare's birthday. Now these too may not immediately seem connected but to me they are because my mum had reams of Shakespeare and lots of other poetry in her head, and she had a poem for everything. As a teenager this was often really embarrassing when she quoted Shakespeare at my friends.

As an adult I have realised that she has instilled in me a love of poetry and Shakespeare and while I don't have her encyclopaedic knowledge and can't quote things at you I do find I know more than I am even consciously aware of. I find poetry a great thing because it can help you find the words to express every emotion there is. I love the poetry of the Bible and often wonder what it sounded like in its original language as even with amazing translators, poetry never quite works when translated. My favourite are the Psalms because they have something to say about everything and they cover all the emotions going from anger or frustration to sadness to overwhelming joy.

As I remember my mum on her birthday this month, I will remember the joy and enthusiasm she had for life and the poem she had for every situation.

Rev. Susan

Services in the Stour Downs

April 2024

	Smeeth 9:30am	Mersham 9:30am	Brabourne	Stowting	Monks Horton	Sellindge
7th April (2 nd Sunday of Easter)	Parish Communion	Iona Service	10am All Age Service		6pm Evensong	
14th April (3 rd Sunday of Easter)	Songs of Praise	Parish Communion		9:30am Family Service		
21st April (4 th Sunday of Easter)	Parish Communion	Morning Worship	11am Communion			
28th April (5 th Sunday of Easter)	Morning Worship	Parish Communion		11am Communion		
Wednesday 3 rd , 10 th , 17 th , 24 th April			9:30am Midweek Parish Communion			