

# SELLINDGE VILLAGE NEWS

## July 2024

Edition 723



Last year the Boundary Commission announced various boundary changes to various Parliamentary Constituencies. One such boundary change affects the North Downs West and North Downs East Wards of Folkestone & Hythe DC. Sellindge is part of North Downs West. From this Election Sellindge is part of the Ashford Parliamentary Constituency. But still remains part of Folkestone & Hythe District Council.

The Candidates for the Election are as follows –

- |                                      |                                     |
|--------------------------------------|-------------------------------------|
| <b>Green</b> Damian Howard           | – <b>The Conservative Party.</b>    |
| <b>Joseph</b> Sojan                  | – <b>Labour Party.</b>              |
| <b>Kennedy – Harper</b> Tristan John | – <b>Reform UK.</b>                 |
| <b>Ransley</b> James Gordan          | – <b>Your Local Consensus Party</b> |
| <b>Rossi</b> Mandy                   | – <b>The Green Party.</b>           |
| <b>Rowledge</b> Adam James           | – <b>Liberal Democrats.</b>         |



Election date **Thursday July 4<sup>th</sup> 2024**. Polling Station is the **Durling Hall, Sellindge Village Hall 7am to 10pm.**

### **ROAD CLOSURE – MOORSTOCK LANE**

Due to works planned to be undertaken by **UK Power Networks**, it will be necessary to close part of Moorstock Lane, Sellindge, **from 29<sup>th</sup> July 2024 with estimated completion by 16th August 2024.**

Moorstock Lane, Sellindge, will be closed from Windsor Cottages to Trust Cottages, to the extent indicated by signs and barriers on site. The alternative route for any through traffic is via Moorstock Lane, Swan Lane, A20 Main Road and vice versa. Pedestrian access will be maintained during the works.

The closure is required for the safety of the public and workforce while allowing utility works to be carried out, works are undertaken by UK Power Networks.

For the most up to date information on these works please visit: <https://one.network/?tm=138198118>

For information regarding this closure please contact UK Power Networks 08000 294 285, who are able to assist with the scope of these works. The Kent County Council Highways Helpline phone number is: 03000 418 181

### **MAJOR ROAD CLOSURE COMING IN AUGUST – MAIN ROAD A20**

Due to works planned to be undertaken by **Kent County Council**, it will be necessary to close part of A20 Main Road, Sellindge, from **5<sup>th</sup> August 2024 with estimated completion by 23<sup>rd</sup> August 2024.**

A20 Main Road, Sellindge, will be closed between the junctions of Coopers Lane and Moorstock Lane, between the hours of **20:00 (8pm) and 05:00 (5am)** only, to the extent indicated by signs and barriers on site.

Pedestrian access will be maintained during the works.

The closure is required for the safety of the public and workforce while allowing resurfacing works to be carried out, works are undertaken by Kent County Council.

For the most up to date information on these works please visit: <https://one.network/?tm=137662129>

For information regarding this closure please contact Kent County Council 03000 418 181, who will be able to assist with the scope of these works. Kent County Council Highways Helpline phone number is: 03000 418 181

### **INDOOR TABLETOP SALES – Sellindge Village Hall 9am to 1pm. Sat July 6<sup>th</sup> 9am to 1pm**

Many stalls already booked a mix between household stalls and different crafts. Tables are £6 a 6 foot table. Refreshments available to purchase. Parking and entry are free. Book/info contact Jeanette 07753 283 575.

Saturdays – Sellindge Village Hall 9am to 1pm. – **August 3<sup>rd</sup> – Sept 7<sup>th</sup> – Oct 5<sup>th</sup> – Nov 2<sup>nd</sup> – Dec 7<sup>th</sup>**

### **SELLINDGE FARMERS & CRAFT MARKET in SELLINDGE VILLAGE HALL**

Next Sellindge Farmers & Craft Market is **SUNDAY JULY 21<sup>st</sup>** Open at 10am to 1pm.

Check out the Sellindge Farmers & Craft Market Face Book Page for more details.

**SELLINDGE BOOT FAIR** – At the Sports and Social Club in Swan Lane.

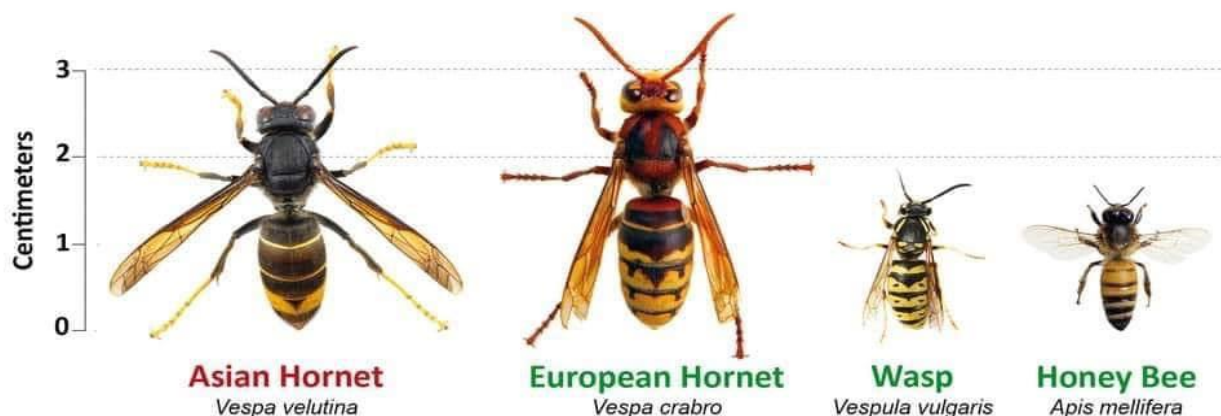
**Saturday July 13<sup>th</sup>** starting at 10am subject to weather on the day – Fun day grab a bargain.

*Sellindge Sports & Social Club – Late Summer Show – Will be held on **Sunday August 18<sup>th</sup>**, entry form in August News.*

*Disclaimer – The views are the views of those making the submissions and is not necessarily the views of the Editor or Parish Council*



# Think you've seen an Asian Hornet? Report it!



Report through the Asian Hornet Watch app or [www.bit.ly/asianhornetreport](http://www.bit.ly/asianhornetreport)



## URGENT – Defra update 13.5.24

On 10th of May, a further Asian hornet was found near to Four Oaks, Kent by the NBU in traps set as part of the spring trapping work. In addition, an Asian hornet was located by a member of the public in **Lympne, Kent**, on 9th of May. The insect was killed, captured, and subsequently collected by an NBU inspector. Both of these specimens have been sent to the lab for analysis and official confirmation.

Genetic analysis has now been completed on the three other queens found at Four Oaks, Kent, and the single individuals at Romford, London, and Ash, Kent. The analysis has indicated that the hornets found at Four Oaks are overwintered offspring of the nest destroyed in Rye, Kent, in November 2023. **Asian Hornet – note the yellow legs →** However, there is no evidence to show that the hornets found in Romford and Ash are the offspring of any of the nests from last year. The NBU is continuing the spring trapping work, which includes **monitoring the areas around Lympne** and Four Oaks.



Please. Be vigilant. These are being described as over wintered queens. They have hidden away all winter. The one in Ash was apparently in a garden shed.

But there is a lot of European Hornets emerging now. They are harmless. Please do not hurt them.

## MOBILE LIBRARIES DATES and TIMES FOR JULY 2024

[www.kent.gov.uk/leisure-and-community/libraries/visiting-a-library/mobile-libraries](http://www.kent.gov.uk/leisure-and-community/libraries/visiting-a-library/mobile-libraries)

Lay By on A20 at the bottom of Swan Lane.

**Thursdays** – 9.15am to 9.45am on **July 4<sup>th</sup> & 18<sup>th</sup> – August 1<sup>st</sup>**

Lay by in Swan Lane at the entrance to Greenfields.

**Fridays** – 2.50pm to 3.20pm on **July 5<sup>th</sup> & 19<sup>th</sup> – August 2<sup>nd</sup>**



**HI KENT – Reg Charity 1052036** [www.hikent.org.uk](http://www.hikent.org.uk)

*The local charity for people with a hearing loss*

Hi Kent provides FREE NHS hearing aid aftercare, advice and battery supply. The local hearing aid maintenance clinic will be in Coffee & Company in the Durling Hall, Sellindge Village Hall on

**Tuesday July 9<sup>th</sup>** from 10.15am to 11.15am. Other dates for 2024

**August 13<sup>th</sup> – Sept 10<sup>th</sup> – Oct 8<sup>th</sup> – Nov 12<sup>th</sup> – Dec 10<sup>th</sup>**

The next meeting of your Parish Council is on **Tuesday July 9<sup>th</sup>** starting at 6.30pm in the Durling Hall.

From your Parish Council Clerk Linda Hedley

**Dog Poo Bags** – Dog poo bags are still available from Nigel at Trust Cottages in Moorstock Lane, he puts them on a patio chair or table outside his house, as does Cllr Bull who places on the front garden wall, in Swan Lane if you phone him on his mobile 07710 260 751. Also available from

Dog Poo Bag dispenser located at the Village Green Entrance.

**F&HDC NORTH DOWNS WEST WARD – Cllr Jenny Hollingsbee (Conservative)**

[jenny.hollingsbee@folkestone-hythe.gov.uk](mailto:jenny.hollingsbee@folkestone-hythe.gov.uk)

Mobile 07887 918 458  @jennyhollingsbee

**Stelling Minnis Salvage Yard** – An unearthed piece of Folkestone's Victorian past has been returned to a sea view spot almost 137 years to the day since it was first laid. The 'Victoria Pleasure Pier Foundation Stone' is back in position at the end of the Lower Leas Coastal Park after it was spotted at a salvage yard in Stelling Minnis. Residents and visitors can now view this fascinating part of Folkestone's history on the green space close to where the original pier once stood at the end of the Lower Leas Coastal Park.

**Planning** – At a recent Planning Briefing for Members, we were advised that the Planning Department are dealing with current planning applications within the eight-week period, unless an extension has been agreed or it is a complex application. However, this does mean that applications must be submitted with all necessary information upon which the decision can be made. There are still some older applications that have yet to be assessed and Officers are working through these. I will update on this issue as it progresses.

**Otterpool Park** – A new independent chair has been appointed to lead the board overseeing the development of the Otterpool Park garden town. Paula Hirst will take up the non-executive position in July and is very much looking forward to supporting the LLP (Limited Liability Partnership) to bring about the next stage of the 10,000-home project. A Folkestone resident, Paula is founder and director of Disruptive Urbanism. She set up the company 11 years ago aiming to bring fresh thinking to how urban development is planned, designed and constructed. Because of the General Election, negotiations with Homes England with regard to funding are 'on pause'.

**Ward Grants** – our Ward Budget is now open for small grants across the North Downs West Ward – for further information please see [Ward budget scheme | Folkestone & Hythe District Council \(folkestone-hythe.gov.uk\)](#)

**Cllr Elaine Martin Contact:**

[Elaine.Martin@folkestone-hythe.gov.uk](mailto:Elaine.Martin@folkestone-hythe.gov.uk) (Green Party)

### **SELLINDGE WALKING GROUP**

We meet at the Village Hall on a Tuesday morning at approximately 10.20am and set off at 10.30am. We walk for 1 and 1/2 hours around the village using local footpaths. This does involve crossing fields and climbing over stiles so appropriate footwear is advisable. We are no longer part of the NHS Walking for Health Scheme just a group of locals who enjoy walking. Everyone walks at their own risk.

*Coffee & Company*

*At Sellindge Village  
Hall*

*Every Tuesday 9-1pm*

*All are Welcome to call  
in for a friendly chat  
and a cuppa*



**KCC COUNCILLOR** Susan Carey, Elham Valley Ward. [susan.carey@kent.gov.uk](mailto:susan.carey@kent.gov.uk) 01303 670 561

A cross-party Manifesto for Counties has been launched by the County Councils Network of which KCC is an active member and it's available online. Inevitably it's calling for more funding (what public service ever says it has enough) but it's also about reform of services and allowing more decisions about local matters to be taken locally. I hope all the parties are listening. You will probably be as surprised as I was to discover that domestic violence rises when England plays in football tournaments. Cases of domestic abuse rise 38% when England loses and 26% when they win or draw. With the Euro 2024 football championship under way, people are being urged to look out for signs of domestic abuse and to seek help if they are a victim of it.

There's information on [www.domesticabuseservices.org.uk](http://www.domesticabuseservices.org.uk) and a helpline at Victim Support 0808 168 9111.

KCC offers services to help and works with Kent Police and other partners in this difficult area.

Work continues on 'Making Space for Nature' which is identifying those parts of Kent and Medway which are most important for nature and how they can be made more diverse, larger and better connected.

It's open to organisations and individuals to take part through workshops in person and also online as a workshop of one at a time to suit you. See [www.makingspacefornaturekent.org](http://www.makingspacefornaturekent.org) see what's been done so far. Completed strategy becomes part of planning system so will have a real influence on future development.

The pothole blitz is under way to repair as much of the damage to our roads as available funding and weather allow.

Some of the works require road closures including part of the A20 Main Road in Sellindge.

Do please continue to help by reporting problems on our roads particularly the rural roads that are inspected less frequently than the A roads. The best way to do this is online at [www.kent.gov.uk](http://www.kent.gov.uk) then go to the section on 'Roads and Travel' and select the option to 'report a problem'. You can ring on 03000 41 81 81 in office hours where the call centre staff also use the KCC website to report the problem. If there's an immediate danger to life then ring 999.

Urgent problems out of office hours can be reported at 03000 41 91 91.

I attended Sellindge Parish Council on 11 June to give my KCC report and listen to local views. It's a good place to raise concerns but I'm also happy to hear from residents in between these formal events.

**KCC BUDGET CONSULTATION** – Services residents want to see prioritised, ideas for cost savings and income generation, and future increases in Council Tax are the basis of questions in an eight-week budget consultation launched on Thursday June 13<sup>th</sup> by Kent County Council (KCC).

The setting of the annual KCC budget is once again a challenging process for 2025-26. The estimated budget gap is £81 million and with some of the authority's reserves having been used to bolster recent years' budgets, further tough choices will need to be considered.

Since 2011, KCC has had to find almost £1 billion in savings and income generation in order to manage spending revenue budget of £1,429m. In other words, spending would have had to increase by £1.5bn over this period to keep pace with rising costs and demands rather than the extra £0.5bn available.

Significant spending demands and cost increases, largely for the most vulnerable residents in the areas of adult and children's social care and home to school transport, continue to squeeze the budget.

Complex needs, population growth and people living longer are all factors that are contributing to the financial pressures of authorities across the UK as well recent high levels of inflation and significant increases in National Living Wage in recent years adding pressure on budgets.

The Government requires local authorities to deliver a balanced budget, which means planned spending must be managed within funding resources available.

KCC's funding comes predominately from Council Tax and central government grants. For the last few years, local authorities across the country have lobbied the Government to increase the support given to councils, so they can adequately maintain vital services.

KCC is also closely reviewing all of its operations year-on-year to identify opportunities to save money wherever it can. That has included accelerating the use of digital technology and looking at its premises estate to ensure the right buildings are in the right places to achieve its Net Zero ambitions.

In this year's budget consultation, residents will be asked their views on an increase in their Council Tax, along with suggestions as to how, where KCC make cuts in services which are necessary to ensure financial sustainability of Council.

However, taking these actions is not enough and the financial challenge faced in 2025-26, like in previous years, is significant and means difficult policy choices will be needed in February 2025 when the budget comes before the full Council. It is essential these choices are informed by responses to this consultation.

KCC welcomes innovative solutions from people living in the county which could help prevent a further shift towards reducing statutory services to a level it legally has to provide.

The priority is to make the most efficient use of taxpayers' money while focusing on protecting vital services to the most vulnerable people in Kent. The budget consultation closes on 7 August 2024.

**Further information:** To get involved visit: [www.kent.gov.uk/budget](http://www.kent.gov.uk/budget) If you are unable to take part online, a hard copy is available please call 03000 421 553 (text relay service number: 18001 03000 421 553).

## SELLINDGE TENNIS CLUB



We've some fantastic coaching opportunities for adults and juniors on offer **Sellindge Tennis Club - Kent LTA Club of the Year 2021** at the moment.

**Junior coaching - 4-8 year olds** – Mondays: 4.30 pm - 6.30 pm – Saturdays: 9.00 am - 10am

**Junior coaching - 9-12 years olds** – Mondays: 5.30 pm - 6.30 pm – Saturdays: 10am – 11am

**Adult coaching – beginners or rusty rackets welcome** – Fridays: 10.00 am – 11.00 am

More details on how to book the above sessions are available at [www.adtennis.co.uk](http://www.adtennis.co.uk) or by texting Nick Skelton on 07545 871 087.

**Adult coaching** – Tuesdays: 6.30 pm to 7.30 pm. Contact Mike Bruce on 07743 341 299.

Club social tennis is a regular feature at Sellindge Tennis club. New adult players are able to mix in with the regulars and enjoy doubles play in a relaxed and welcoming environment.

### Walking Tennis

Free beginners Walking Tennis sessions starts Tuesday 4 June from 2 pm.

Contact Mike Bruce for more information on 07743 341 299.

find out more about our Club socials and trial a session for free contact Caroline Club Secretary 07816 062 205



## THE SELLINDGE SPORTS & SOCIAL CLUB –

[www.sellindgesportsclub.co.uk](http://www.sellindgesportsclub.co.uk) 

**Thurs** Pizza nights, **Fri** Fish and Chips, takeaway & local delivery available.

Open 9am Saturdays and Sundays serving Breakfast Rolls & full menu.

**Monday – Crafty Crafters – 1.30pm to 3.30pm.**

**Tuesday – Whist Drive – 7pm**

**Wednesday – Pilates — 9.30am**

**Youth Club** for ages 11 to 16 from 5pm to 7pm – (Term time)

**Thursday – night BINGO 8pm**

### OPENING TIMES

Monday	3pm – 7pm
Tuesday	3pm – 9pm
Wednesday	3pm – 9pm
Thursday	3pm – 10pm
Friday	3pm – 11pm
Saturday	9am – 11pm
Sunday	9am – 6pm

**Closing times subject to change**

**SELLINDGE**

**SUMMER MULTI SPORT CAMP**

WEEK 1- 29TH JULY - 2ND AUG 9AM - 2PM  
WEEK 2 - 5TH AUG - 9TH AUG 9AM - 2PM

- FOOTBALL
- ROUNDBALL
- DODGEBALL
- NERF GUN
- ATHLETICS
- FOOT TENNIS
- BADMINTON
- AND MANY FUN ACTIVITIES

**AGES 6 - 13**

**LIMITED SPACES AVAILABLE**

**1 DAY £25 OR 5 DAYS FOR £100**

PLEASE MESSAGE US FOR FURTHER DETAILS OR BOOKING

07394896796

QUALIFIED COACHES FULLY INSURED  
FULLY DBS CHECKED



Sellindge Bowls

**SELLINDGE BOOT FAIRS 2024 – Sat 13<sup>th</sup> July – Sat 17<sup>th</sup> August**

**CAR - £7 – CAR AND TRAILER OR VAN - £10 STARTS AT 10 AM** All dates subject to weather.

*Disclaimer – The views are the views of those making the submissions and is not necessarily the views of the Editor or Parish Council*

## Village Hall Weekly Events

### MONDAY

SUPERSTRIKERS	9.30am -10.30am	Main Hall <a href="http://www.superstrikers.co.uk">www.superstrikers.co.uk</a>
RAINBOWS	4pm – 5pm	Main Hall - 01303 812 297 (Term time)
BROWNIES	5.15pm - 6.45pm	Main Hall - 01303 812 297 (Term time)
LINE DANCING	7.30pm – 9pm	Main Hall – 07753 274 913

### TUESDAY

COFFEE & COMPANY	9am – 12.30pm	Main Hall
MOTHER & BABY GROUP	1.30pm – 3pm	Main Hall
LINE DANCING	6pm – 7.30pm,	Main Hall – 07989 210 449

### WEDNESDAY

BABY MASSAGE & TUMMY TIME	10am – 12.00 Noon	Durling Hall
BEES BODS	5.45pm – 6.45pm	Main Hall - 01303 813 274
AEROBIC BODY BLAST	7pm - 8pm	Main Hall - 01233 820 109
LANGUAGE CLASSES	6pm – 8pm	Durling Hall

### THURSDAY

TINY TALK	10am – 11am	Durling Hall
PILATES	9.30 – 10.45am	Main Hall
LINE DANCING	12 Noon – 1.30pm	Main Hall – 07989 210 449
TAEKWONDO	Various classes from 5.15pm	Main Hall – 01303 814 635

### FRIDAY

RUGBY TOTS	9.15am – 10.15am	Main Hall
1 <sup>st</sup> SELLINDGE SCOUT GROUP	CUBS - 6 -7.30pm, SCOUTS - 7.30-9.00pm,	BEAVERS - 6.00-7.15pm, EXPLORERS 7.30—9.00pm.
Both Halls	01303 813 250. <a href="mailto:1stsellindgesg@gmail.com">1stsellindgesg@gmail.com</a>	(Term time)

## Village Hall Monthly Events

### TUESDAY

PARISH COUNCIL	2nd Tuesday of the month at 6.30pm Parish Clerk 01303 813 271	Durling Hall –
----------------	--	----------------

### WEDNESDAY

### FRIDAY

WEIGH and PLAY	12 <sup>th</sup> & 26 <sup>th</sup> July	10am	Durling Hall
----------------	--	------	--------------

### SATURDAY

TABLETOP FAIR	1 <sup>st</sup> Saturday of the month 9am – 1pm	Main Hall
---------------	---	-----------

### SUNDAY

FARMERS MARKET	3 <sup>rd</sup> Sunday of the month 10am – 1pm	Main Hall
----------------	--	-----------



**Sellindge Village Hall**  
Halls available for hire.  
Meetings, Clubs, Parties,  
Wedding receptions etc  
01303 813250 [sellindgevillagehall@gmail.com](mailto:sellindgevillagehall@gmail.com)



# STOUR DOWNS

Smeeth Mersham Brabourne Monks Horton Stowting Sellindge

## Stour Downs Parish Brabourne, Mersham, Monks Horton, Sellindge, Smeeth & Stowting Churches

Rev Chris Denyer 07526 688 826 / 01303 761 972 / [vicar@stourdowns.org.uk](mailto:vicar@stourdowns.org.uk)

Rev Susan Manners (Curate) 01233 500 414

[www.stourdowns.org.uk](http://www.stourdowns.org.uk) also on Facebook

### STOUR DOWNS PARISH Vicar's letter –

Perhaps like me, you are not keen on endings? I don't like reaching the end of a well-written book and I want to know more of what happens next when the film credit's role. Saying goodbye is difficult.

In the past week when writing this, it was the first anniversary of losing our wonderful family labrador. When she passed away, I planted a rose called "Sweet Memories" and it was this particular week that the rose bloomed for the first time this year.

This is my final letter as I prepare to depart for pastures new and I move with the family to Herne to take up the post of Priest-in-Charge of St Martin Herne with St Peter Greenhill. It has been wonderful to get to know a variety of people across the six villages of this parish and to be the Vicar of such beautiful Kent country churches.

I hand over the reins to our Curate Reverend Susan, who will be Curate-in-Charge of the Stour Downs for the next year. It is good that there will be continuity for the churches and communities and of the parish, continuing and growing all that we have been working on. Much of my ministry here as the first Vicar of the Stour Downs has been to draw the six churches together and grow stronger together. Susan will continue to build on this as well as focus on growing us stronger financially. For there to be a new Vicar of the parish, we need to be financially solvent and sustainable across the six churches. The church building of St Mary's, Sellindge is there as it has been for nearly a thousand years as a space for the community to gather for worship, to celebrate life events, for prayer and reflection. On a Thursday morning, the Church Room is home to a welcoming space for coffee, cake, chat and access to the Parish Foodbank. The ancient building continues to be maintained and cared for by volunteers and financed entirely by voluntary contributions. They need your help! We are grateful to the Parish Council for maintaining the churchyard and making a real difference to this over the past few years.

Thank you for the privilege and honour of being your Vicar, journeying with you through some challenging times such as Covid and in happier times of celebration.

May God bless you and keep you – Chris

Services in the Stour Downs July 2024

	Smeeth 9:30am	Mersham 9:30am	Brabourne	Stowting	Monks Horton	Sellindge
<b>7th July</b> (6 <sup>th</sup> after Trinity)	<b>Parish Communion- Rev Chris' farewell service</b>	<i>No service due to Rev Chris' farewell service</i>	<i>No service due to Rev Chris' farewell service</i>		<b>6pm Evensong</b>	
<b>14<sup>th</sup> July</b> (7 <sup>th</sup> after Trinity)	<b>Songs of Praise</b>	<b>Parish Communion</b>		<b>9:30am Family Service</b>		
<b>21<sup>st</sup> July</b> (8 <sup>th</sup> after Trinity)	<b>Parish Communion</b>	<b>Morning Worship</b>	<b>11am Communion</b>			
<b>28<sup>th</sup> July</b> (9 <sup>th</sup> after Trinity)	<b>Morning Worship</b>	<b>Parish Communion</b>		<b>11am Communion</b>		
<b>Wednesday</b> 3 <sup>rd</sup> , 10 <sup>th</sup> , 17 <sup>th</sup> , 24 <sup>th</sup> , 31 <sup>st</sup> July			<b>9:30am Midweek Parish Communion</b>			