

# SELLINDGE VILLAGE NEWS



## August 2024

Edition 724

### RESULT OF THE GENERAL ELECTION HELD ON THURSDAY JULY 4<sup>th</sup> 2024 Ashford parliamentary election - 4 July 2024

Candidate	Description (if provided)	Number of votes cast
Damian Green	The Conservative Party Candidate	13483
<b>Sojan Joseph</b>	<b>Labour Party</b>	<b>15262</b>
Tristram Kennedy Harper	Reform UK	10141
James Ransley	Your Local Consensus Party Candidate	1289
Mandy Rossi	The Green Party	4355
Adam Rowledge	Liberal Democrats	2445

#### ROAD CLOSURE – MOORSTOCK LANE

Due to works planned to be undertaken by **UK Power Networks**, it will be necessary to close part of Moorstock Lane, Sellindge, **from 29<sup>th</sup> July 2024 with estimated completion by 16<sup>th</sup> August 2024.**

Moorstock Lane, Sellindge, will be closed from Windsor Cottages to Trust Cottages, to the extent indicated by signs and barriers on site. The alternative route for any through traffic is via Moorstock Lane, Swan Lane, A20 Main Road and vice versa. Pedestrian access will be maintained during the works.

The closure is required for the safety of the public and workforce while allowing utility works to be carried out, works are undertaken by UK Power Networks.

For the most up to date information on these works please visit: <https://one.network/?tm=138198118>

For information regarding this closure please contact UK Power Networks 08000 294 285, who are able to assist with the scope of these works. The Kent County Council Highways Helpline phone number is: 03000 418 181

#### MAJOR ROAD CLOSURE IN AUGUST – MAIN ROAD A20

Due to works planned to be undertaken by **Kent County Council**, it will be necessary to close part of A20 Main Road, Sellindge, from **5<sup>th</sup> August 2024 with estimated completion by 23<sup>rd</sup> August 2024.**

A20 Main Road, Sellindge, will be closed between the junctions of Coopers Lane and Moorstock Lane, between the hours of **20:00 (8pm) and 05:00 (5am)** only, to the extent indicated by signs and barriers on site.

Pedestrian access will be maintained during the works.

The closure is required for the safety of the public and workforce while allowing resurfacing works to be carried out, works are undertaken by Kent County Council.

For the most up to date information on these works please visit: <https://one.network/?tm=137662129>

For information regarding this closure please contact Kent County Council 03000 418 181, who will be able to assist with the scope of these works. Kent County Council Highways Helpline phone number is: 03000 418 181

#### INDOOR TABLETOP SALES – Sellindge Village Hall 9am to 1pm. **Sat August 3<sup>rd</sup>** 9am to 1pm

Many stalls already booked a mix between household stalls and different crafts. Tables are £6 a 6-foot table. Refreshments available to purchase. Parking and entry are free. Book/info contact Jeanette 07753 283 575.

Saturdays – Sellindge Village Hall 9am to 1pm. — **Sept 7<sup>th</sup> – Oct 5<sup>th</sup> – Nov 2<sup>nd</sup> – Dec 7<sup>th</sup>**



#### SELLINDGE FARMERS & CRAFT MARKET in SELLINDGE VILLAGE HALL

Next Sellindge Farmers & Craft Market is **Sunday August 18<sup>th</sup> Open** at 10am to 1pm.

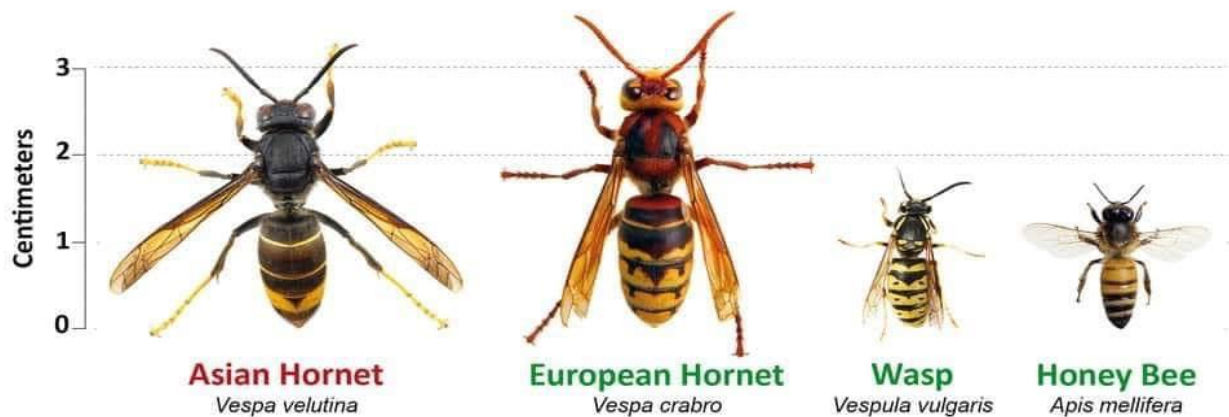
Check out the Sellindge Farmers & Craft Market Face Book Page for more details.

#### SELLINDGE BOOT FAIR – At the Sports and Social Club in Swan Lane.

**Saturday August 17<sup>th</sup>** starting 10am subject weather on the day – Fun day grab a bargain.

*Sellindge Sports & Social Club – Late Summer Show – is on **Sunday August 18<sup>th</sup>**, entry form on **page 9.***

# Think you've seen an Asian Hornet? Report it!



Report through the Asian Hornet Watch app or [www.bit.ly/asianhornetreport](http://www.bit.ly/asianhornetreport)



## URGENT – Defra update 13.5.24

On 10th of May, a further Asian hornet was found near to Four Oaks, Kent by the NBU in traps set as part of the spring trapping work. In addition, an Asian hornet was located by a member of the public in **Lympne, Kent**, on 9th of May. The insect was killed, captured, and subsequently collected by an NBU inspector. Both of these specimens have been sent to the lab for analysis and official confirmation.

Genetic analysis has now been completed on the three other queens found at Four Oaks, Kent, and the single individuals at Romford, London, and Ash, Kent. The analysis has indicated that the hornets found at Four Oaks are overwintered offspring of the nest destroyed in Rye, Kent, in November 2023. **Asian Hornet – note the yellow legs →** However, there is no evidence to show that the hornets found in Romford and Ash are the offspring of any of the nests from last year. The NBU is continuing the spring trapping work, which includes **monitoring the areas around Lympne** and Four Oaks.

Please. Be vigilant. These are being described as over wintered queens. They have hidden away all winter. The one in Ash was apparently in a garden shed.

But there is a lot of European Hornets emerging now. They are harmless. Please do not hurt them.



## MOBILE LIBRARIES DATES and TIMES FOR AUGUST 2024

[www.kent.gov.uk/leisure-and-community/libraries/visiting-a-library/mobile-libraries](http://www.kent.gov.uk/leisure-and-community/libraries/visiting-a-library/mobile-libraries)

Lay By on A20 at the bottom of Swan Lane.

**Thursdays** – 9.15am to 9.45am on **August 1<sup>st</sup>, 15<sup>th</sup> & 29<sup>th</sup>**

Lay by in Swan Lane at the entrance to Greenfields.

**Fridays** – 2.50pm to 3.20pm on **August 2<sup>nd</sup>, 16<sup>th</sup> & 30<sup>th</sup>**



**HI KENT – Reg Charity 1052036** [www.hikent.org.uk](http://www.hikent.org.uk)

*The local charity for people with a hearing loss*

Hi Kent provides FREE NHS hearing aid aftercare, advice and battery supply. The local hearing aid maintenance clinic will be in Coffee & Company in the Durling Hall, Sellindge Village Hall on

**Tuesday August 13<sup>th</sup>** from 10.15am to 11.15am. Other dates for 2024

**Sept 10<sup>th</sup> – Oct 8<sup>th</sup> – Nov 12<sup>th</sup> – Dec 10<sup>th</sup>**

The next meeting of your Parish Council is on **Tuesday August 13<sup>th</sup>** starting at 6.30pm in the Durling Hall. From your Parish Council Clerk Linda Hedley

**Dog Poo Bags** – Dog poo bags are still available from Nigel at Trust Cottages in Moorstock Lane, he puts them on a patio chair or table outside his house, as does Cllr Bull who places on the front garden wall, in Swan Lane if you phone him on his mobile 07710 260 751. Also available from Dog Poo Bag dispenser located at the Village Green Entrance.

**F&HDC NORTH DOWNS WEST WARD – Cllr Jenny Hollingsbee (Conservative)**

[jenny.hollingsbee@folkestone-hythe.gov.uk](mailto:jenny.hollingsbee@folkestone-hythe.gov.uk)

Mobile 07887 918 458  @jennyhollingsbe

**General Election 2024** – Our thanks go to Officers and Staff at both FHDC and ABC for the efficient way in which the election was run. I wish our two new Members of Parliament, Sojan Joseph for the Ashford Constituency (of which the North Downs is part) and Tony Vaughan for the Folkestone & Hythe Constituency, the best of luck as they come to terms with their new positions. My commiserations to Damian Collins and Damian Green our outgoing MP's and I thank them for their service, for fourteen years and twenty seven years respectively, and wish them well for the future.

**Stour Downs Parish** – The Stour Downs Parish includes Sellindge, Stowting and Monks Horton in the North Downs West Ward. Our vicar, Rev Chris Denyer has been appointed as Priest in Charge at Herne with Greenhill. I would like to thank him for all his work over the last five or so years in this Parish and wish him well for the future. I welcome Rev Susan Manners as Interim Curate-in-Charge and wish her well in this role.

**Elham Valley Group of Churches** – which includes Lyminge, Postling and Stanford in the North Downs West Ward, has recently welcomed the induction of Rev Carol Bates as the new Priest-in-charge and I wish her and her family well in this new role.

**Cross Channel Traffic Disruption** - Kent and Medway Resilience Forum has published a letter aimed at residents in our District. It explains why measures such as closing the Roundhill Tunnel and Dover Tap are necessary and seeks to reassure that the emergency services have plans in place to get to anyone that needs help when traffic is disrupted – see [Letter to residents and businesses.pdf \(folkestone-hythe.gov.uk\)](#)

**Police & Crime Commissioner** – At the Police & Crime Panel on 16 July, the Commissioner gave an up-to-date report on the Neighbourhood Policing Model which is due to be fully implemented by September 2024. He also gave a detailed report on the Criminal Justice System where staff shortages continue to be a concern – for further information on this subject see the report [Public reports pack 16072024 1000 Kent and Medway Police and Crime Panel.pdf](#)

**My Community Voice** – this is a good way to find out about local and national scams and also to communicate with our local police officers – to register and for further information [Home Page - My Community Voice Kent](#)

**Microchipping for cats** is now compulsory. On 10 June 2024, it became law in England mandating the microchipping of all pet cats meaning all cats over the age of 20 weeks must be microchipped. You can be fined up to £500 if your dog or cat is not microchipped. DogorCatmicrochipped on the Gov.uk website.

*Disclaimer – The views are the views of those making the submissions and is not necessarily the views of the Editor or Parish Council*



**Home Upgrade Grant**

Is your home heating electric, oil, LPG or solid fuel?

You could be eligible for fully-funded home energy efficiency improvements

**Time is running out for FREE energy-saving upgrades - register your interest by 30 September 2024**

If your home was cold last winter, you struggled to pay your bills. You might be eligible for a Home Upgrade Grant.

HUG2 is a Government grant scheme to fund energy-saving upgrades for residents with off-grid gas heating systems who are most likely to be impacted by the high cost of energy bills.



**HUG**



To find out more, join us at our coming energy events, scan the QR code



Social  
Enterprise  
Kent



COMMUNITY  
ENERGY  
SOUTH

*Coffee & Company*

*At Sellindge Village Hall*

*Every Tuesday 9-1pm*

*All are Welcome to call in for a friendly chat and a cuppa*





**KCC COUNCILLOR** Susan Carey, Elham Valley Ward. [susan.carey@kent.gov.uk](mailto:susan.carey@kent.gov.uk) 01303 670 561

A reminder to you all that major roadworks is planned in Sellindge this month. Some of the works require road closures including part of the A20 Main Road in Sellindge between the junctions of Coopers Lane and Moorstock Lane, between the hours of 20:00 and 05:00 from 5th August 2024.

The road will reopen during the day and the night-time closures are expected to last until 23rd August 2024.

Do please continue to help by reporting problems on our roads particularly the rural roads that are inspected less frequently than the A roads. The best way to do this is online at [www.kent.gov.uk](http://www.kent.gov.uk) then go to the section on 'Roads and Travel' and select the option to 'report a problem'. You can ring on 03000 41 81 81 in office hours where the call centre staff also use the KCC website to report the problem. If there's an immediate danger to life then ring 999. Urgent problems out of office hours can be reported at 03000 41 91 91.

Kent & Medway Resilience Forum implemented Operation Brock on the M20 from 10 July and it's expected to stay in place till mid-August. Whilst this does help mitigate the problems of the heavy cross Channel traffic it is by no means the long-term solution needed and KCC will be lobbying the new Government (as we did previous governments) for the infrastructure we need so that Kent residents and businesses are able to move freely about the county.

KCC is putting together its plans for its 2024/25 budget and we will need to continue to make savings to cope with rising demand for social care within the funds available. There's a consultation under way to ask which services should get priority and you can take part until 07 August. You can take part through registering at Let's Talk Kent <https://letstalk.kent.gov.uk/>

Another consultation that's under way on Let's Talk Kent is on the Local Transport Plan for Kent. I was very pleased to see it identifies the Alkham Valley/Spitfire Way junction that serves Hawkinge and Folkestone as a priority for improvement. Disruption here quickly leads to problems across our local road network. As with previous Local Transport Plans much that it covers, such as the restoration of international rail services at Ashford and Ebbsfleet and the Lower Thames Crossing rely on others – rail companies, Government, developer contributions etc. but KCC has a good record in delivering previous Transport Plans. You can comment on as many or as few items as interest of you and the consultation is open till 08 October.

There's a big push to recruit new foster carers here in Kent. Foster carers are paid and receive support; it's a fulfilling role and a vital one. More information on becoming a foster carer can be found on [LAFosteringSE.org.uk](http://LAFosteringSE.org.uk) or by calling 0300 131 2797. To give you some idea of the scale of KCC's responsibilities, at the end of March 2024 there were 1,460 children in care from Kent families and an additional 480 Unaccompanied Asylum-Seeking Children also in our care.

KCC's most recent full council meeting was on 18 July where one of the papers was the Annual Performance Report. It contains much of interest including progress in reducing our carbon emissions from our own buildings and services which is now down to 11,477 tonnes (it was 45,270 tonnes in 2015).

LED lamps in our streetlights, solar panels on roofs, heat pumps and energy efficiency measures have all contributed to this. The progress continues as KCC's new solar park at Kings Hill on the site of a former pig farm is now fully operational and will generate around 3 million KWH of electricity a year off-setting our carbon emissions by another 621 tonnes a year. KCC won £5m of government grant towards the £6.5m cost of this project and it will produce renewable energy for the next 30 years reducing both KCC's energy costs and carbon emissions.

As usual, I attended Sellindge Parish Council on 09 July to give my KCC report and answer questions.

*Disclaimer – The views are the views of those making the submissions and is not necessarily the views of the Editor or Parish Council*



**Local Transport Plan**  
Public Consultation

**Have your say!**

We have a new ambition for the future of travel in Kent. Over £400 million was invested in transport to deliver our previous Local Transport Plan. Help us understand your priorities for where we invest in the future.

Find out more and have your say at:  
[kent.gov.uk/ltp5](http://kent.gov.uk/ltp5)  
Consultation closes 8 October 2024

For queries or to request hard copies of the consultation material, please email [ltp5@kent.gov.uk](mailto:ltp5@kent.gov.uk) or phone 03000 416595

For any alternative formats, email [alternativeformats@kent.gov.uk](mailto:alternativeformats@kent.gov.uk) or call 03000 421553 (text relay service number 18001 03000 421553). This number goes to an answering machine, which is monitored during office hours.

SCAN ME!

Kent County Council

**Cllr Elaine Martin Contact:** (Green Party)

[Elaine.Martin@folkestone-hythe.gov.uk](mailto:Elaine.Martin@folkestone-hythe.gov.uk)

**Corporate Plan for 2025 – 2030** – The draft of the updated Corporate Plan for 2025 – 2030 is now available for consultation. Residents are being asked to comment on the Corporate Plan and the consultation is open for 9 weeks until the 27<sup>th</sup> September. It is very important that you share your thoughts on it. The survey can be completed online. The draft plan and survey are also available as a printed booklet and can be obtained by contacting the council on 01303 853000 during business hours. *More information and link to survey –*

[Introduction / Corporate Plan / Folkestone & Hythe District Council \(folkestone-hythe.gov.uk\)](#)

**Venetian Fete** – The Venetian Fete is being held again this year on Wednesday 21<sup>st</sup> August on the Royal Military Canal in Hythe. There is a funfair and a flotilla in the afternoon that is show casing local community groups and is repeated in the evening.

Hythe will also be holding their regular Food Festival over the Bank Holiday weekend, 24<sup>th</sup>, 25<sup>th</sup> and 26<sup>th</sup> August.

**Rural Prosperity Fund** – The Rural Prosperity Fund still has grants available. There is a time limit on the spend where project must be completed by 31<sup>st</sup> March 2025. Grants have been awarded to a wide range of projects including installation of solar panel system at a cricket club, funding towards building a village hall where one does not currently exist and expansion of wireless broadband network in an area that struggles with reliability and usable speeds. Non-repayable grants of up to £30,000 can be available for qualifying projects. Full details can be found at [Rural England Prosperity Fund - Folkestone Works](#)

**Otterpool Park** – A recent briefing was held at Otterpool Park for the two new MP's. Sojan Joseph and Tony Vaughan both spoke of their excitement and commitment to delivering Otterpool Park, which fits precisely into the new Government's Garden Town program.

### SELLINDGE WALKING GROUP

We meet at the Village Hall on a Tuesday morning at approximately 10.20am and set off at 10.30am. We walk for 1 and 1/2 hours around the village using local footpaths. This does involve crossing fields and climbing over stiles so appropriate footwear is advisable. We are no longer part of the NHS Walking for Health Scheme just a group of locals who enjoy walking. Everyone walks at their own risk.



**LTA YOUTH**

**HOLIDAY TENNIS COACHING CAMPS**

are back at Sellindge Tennis Club!!!  
The ideal way to get started or if you already play, level up your game with our qualified LTA coaches.  
29/07-16/08  
£7.50 per hour  
07545871087

adtennis.co.uk

**LTA TENNIS**



Sellindge Tennis Club

### SELLINDGE TENNIS CLUB

Holiday tennis 2024 at Sellindge tennis club. The ideal way to get started or to level up your game if you already play, with our LTA qualified coaches.

9-10am 4-6 year olds –  
10 -1pm 6-12 year olds  
1-3pm 12-16 year olds –  
£ 7.50 per hour

Book now at

<https://clubspark.lta.org.uk/adtennis/Coaching/Camps> or email [adtennis@icloud.com](mailto:adtennis@icloud.com) with any questions



**QUIZ NIGHT**

17<sup>TH</sup> AUGUST 2024 7-7.30

VENUE: SELLINDGE SPORTS & SOCIAL CLUB

69 SWAN LANE, SELLINDGE, TN25 6HB

£5 PER HEAD, MAXIMUM OF 8 PER TEAM

GOLDEN BUCKET – CASH PRIZE

FOOD AND DRINK AVAILABLE

PLEASE CALL DENISE ON 07949862366  
WITH TEAM DETAILS OR EMAIL:  
[nampora1955@gmail.com](mailto:nampora1955@gmail.com)

IN AID OF SELLINDGE & DISTRICT BOWLS CLUB



## SELLINDGE TENNIS CLUB



We've some fantastic coaching opportunities for adults and juniors on offer **Sellindge Tennis Club - Kent LTA Club of the Year 2021** at the moment.

**Junior coaching - 4-8 year olds** – Mondays: 4.30 pm - 6.30 pm – Saturdays: 9.00 am - 10am

**Junior coaching - 9-12 years olds** – Mondays: 5.30 pm - 6.30 pm – Saturdays: 10am – 11am

**Adult coaching – beginners or rusty rackets welcome** – Fridays: 10.00 am – 11.00 am

More details on how to book the above sessions are available at [www.adtennis.co.uk](http://www.adtennis.co.uk) or by texting Nick Skelton on 07545 871 087.

**Adult coaching** – Tuesdays: 6.30 pm to 7.30 pm. Contact Mike Bruce on 07743 341 299.

Club social tennis is a regular feature at Sellindge Tennis club. New adult players are able to mix in with the regulars and enjoy doubles play in a relaxed and welcoming environment.

### Walking Tennis

Free beginners Walking Tennis sessions starts Tuesday 4 June from 2 pm.

Contact Mike Bruce for more information on 07743 341 299.

find out more about our Club socials and

trial a session for free contact Caroline Club Secretary 07816 062 205



## THE SELLINDGE SPORTS & SOCIAL CLUB –

[www.sellindgesportsclub.co.uk](http://www.sellindgesportsclub.co.uk) 

**Thurs** Pizza nights, **Fri** Fish and Chips, takeaway & local delivery available.

Open 9am Saturdays and Sundays serving Breakfast Rolls & full menu.

**Monday – Crafty Crafters – 1.30pm to 3.30pm.**

**Tuesday – Whist Drive – 7pm**

**Wednesday – Pilates – 9.30am**

**Youth Club** for ages 11 to 16 from 5pm to 7pm – (Term time)

**Thursday – night BINGO 8pm**

### OPENING TIMES

Monday	3pm – 7pm
Tuesday	3pm – 9pm
Wednesday	3pm – 9pm
Thursday	3pm – 10pm
Friday	3pm – 11pm
Saturday	9am – 11pm
Sunday	9am – 6pm
Closing times subject to change	



### SELLINDGE

## SUMMER MULTI SPORT CAMP

WEEK 1- 29TH JULY - 2ND AUG 9AM - 2PM  
WEEK 2 - 5TH AUG - 9TH AUG 9AM - 2PM

- FOOTBALL
- ROUNDBALL
- DODGEBALL
- NERF GUN
- ATHLETICS
- FOOT TENNIS
- BADMINTON
- AND MANY FUN ACTIVITIES

AGES 6 -13

LIMITED SPACES AVAILABLE

1 DAY £25 OR  
5 DAYS FOR £100

PLEASE MESSAGE US FOR FURTHER DETAILS OR BOOKING

07394896796



QUALIFIED COACHES FULLY INSURED  
FULLY DBS CHECKED



## Sellindge Clubs

### Late Summer Fun Show

Sellindge Sports and Social Club  
69, Swan Lane, Sellindge

**Sunday 18<sup>th</sup> August 24**

Bring entries from 11.30am to 1pm

Tombola, Food and Drink available during judging

**3pm to 4pm to see show**

This show is open to all villagers and club members so please come along and join in the fun, the emphasis is on fun and there will be at least one category that everyone can take part in

## SELLINDGE BOOT FAIRS 2024 – Sat 17<sup>th</sup> August

(↑↑ entry form on **page 9**)

CAR - £7 – CAR AND TRAILER OR VAN - £10 STARTS AT 10 AM All dates subject to weather.

## Village Hall Weekly Events

### MONDAY

<b>SUPERSTRIKERS</b>	9.30am -10.30am	<b>Main Hall</b> <a href="http://www.superstrikers.co.uk">www.superstrikers.co.uk</a>
<b>RAINBOWS</b>	4pm – 5pm	<b>Main Hall</b> - 01303 812 297 (Term time)
<b>BROWNIES</b>	5.15pm - 6.45pm	<b>Main Hall</b> - 01303 812 297 (Term time)
<b>LINE DANCING</b>	7.30pm – 9pm	<b>Main Hall</b> – 07753 274 913

### TUESDAY

<b>COFFEE &amp; COMPANY</b>	9am – 12.30pm	<b>Main Hall</b>
<b>MOTHER &amp; BABY GROUP</b>	1.30pm – 3pm	<b>Main Hall</b>
<b>LINE DANCING</b>	6pm – 7.30pm,	<b>Main Hall</b> – 07989 210 449

### WEDNESDAY

<b>BABY MASSAGE &amp; TUMMY TIME</b>	10am – 12.00 Noon	<b>Durling Hall</b>
<b>BEES BODS</b>	5.45pm – 6.45pm	<b>Main Hall</b> - 01303 813 274
<b>AEROBIC BODY BLAST</b>	7pm - 8pm	<b>Main Hall</b> - 01233 820 109
<b>LANGUAGE CLASSES</b>	6pm – 8pm	<b>Durling Hall</b>

### THURSDAY

<b>TINY TALK</b>	10am – 11am	<b>Durling Hall</b>
<b>PILATES</b>	9.30 – 10.45am	<b>Main Hall</b>
<b>LINE DANCING</b>	12 Noon – 1.30pm	<b>Main Hall</b> – 07989 210 449
<b>TAEKWONDO</b>	Various classes from 5.15pm	<b>Main Hall</b> – 01303 814 635

### FRIDAY

<b>RUGBY TOTS</b>	9.15am – 10.15am	<b>Main Hall</b>
<b>1<sup>st</sup> SELLINDGE SCOUT GROUP</b>	<b>CUBS</b> - 6 -7.30pm, <b>SCOUTS</b> - 7.30-9.00pm, 01303 813 250. <a href="mailto:1stsellindgesg@gmail.com">1stsellindgesg@gmail.com</a> (Term time)	<b>BEAVERS</b> - 6.00-7.15pm, <b>EXPLORERS</b> 7.30—9.00pm.

Both Halls

## Village Hall Monthly Events

### TUESDAY

<b>PARISH COUNCIL</b>	2nd Tuesday of the month at 6.30pm Parish Clerk 01303 813 271	<b>Durling Hall</b> –
-----------------------	--	-----------------------

### WEDNESDAY

### FRIDAY

<b>WEIGH and PLAY</b>	9 <sup>th</sup> & 23 <sup>rd</sup> August	10am	<b>Durling Hall</b>
-----------------------	---	------	---------------------

### SATURDAY

<b>TABLETOP FAIR</b>	1 <sup>st</sup> Saturday of the month 9am – 1pm	<b>Main Hall</b>
----------------------	---	------------------

### SUNDAY

<b>FARMERS MARKET</b>	3 <sup>rd</sup> Sunday of the month 10am – 1pm	<b>Main Hall</b>
-----------------------	--	------------------



## Sellindge Village Hall

Halls available for hire.  
Meetings, Clubs, Parties,  
Wedding receptions etc

01303 813250 [sellindgevillagehall@gmail.com](mailto:sellindgevillagehall@gmail.com)



## Stour Downs Parish Brabourne, Mersham, Monks Horton, Sellindge, Smeeth & Stowting Churches

Rev Susan Manners (Curate) 01233 500 414 [www.stourdowns.org.uk](http://www.stourdowns.org.uk) also on Facebook

### STOUR DOWNS PARISH Vicar's letter –

Dear all – As I sit looking out of my office window the sun is out, which is a lovely change as up until now July hasn't seemed much like summer but in the coming week the schools break up, summer upon us whatever the weather says.

The summer holidays are with us and depending on your age you might be excited and looking forward to August as a time to enjoy family and a time away from school. If you a parent of school age children, you might have a different view – what on earth are we going to do with the children for six weeks. If you are older, you might be looking after grandchildren which is, I'm told, a combination of brilliant and exhausting. You might on the other hand see August as difficult because there is nothing on television except sport and it is quite lonely as some activities take a break for the summer. However you think of the summer let's pray that the weather helps us enjoy some time outside soaking up the vitamin D.

Speaking of sport, as I write much of the country seems full of hope due to a certain football match this evening. By the time you read this it will be a distant memory however the result goes. We will instead be in the midst of the Olympics with the Paralympics still to come. Following the stories of people we don't know about yet, doing some sports we have rarely heard of or only remember every four years. People who have put their all into training for this moment some of them have been dreaming out most of their lives. Everything they have done in training, all the hard work, missing out on things to make sure they eat right and get enough sleep comes down to this moment. In some cases, it is over in a matter of seconds, but the preparation has taken years. Whatever the prize is for them whether it be a gold medal or making the final or just having the opportunity to represent their country this is an important moment for them. The apostle Paul tells us that Christian faith is like running a race where we need to strain toward what is ahead, pressing on toward the goal and keep going to win the prize. Much like the athletes in the Olympics/Paralympics we are pressing on towards a goal, straining forward.

During the Olympic and Paralympic games, we are reminded that no one achieves this on their own there is a huge team of family, coaches etc behind the scenes helping them achieve their goal. So, this summer let's try and support each other and look out for our neighbours whatever we are doing.

God bless, Rev Susan

### Services in the Stour Downs

#### August 2024

	Smeeth 9:30am	Mersham 9:30am	Brabourne	Stowting	Monks Horton	Sellindge
<b>4<sup>th</sup> August</b> (10 <sup>th</sup> after Trinity)	<b>Parish Communion</b>	<b>Iona Service</b>	<b>10am Family Service</b>		<b>6pm Evensong</b>	
<b>11<sup>th</sup> August</b> (11th after trinity)	<b>Songs of Praise</b>	<b>Parish Communion</b>				
<b>18<sup>th</sup> August</b> (12th after trinity)	<b>Parish Communion</b>	<b>Morning Worship</b>	<b>11am Communion</b>			
<b>25<sup>th</sup> August</b> (13 <sup>th</sup> after Trinity)	<b>Morning Worship</b>	<b>Parish Communion</b>		<b>11am Communion</b>		
<b>Wednesday</b>			<b>9:30am Midweek Parish Communion</b>			



# Entry Form

## Rules and classification for our FUN late summer show

All entries should arrive between 11.30am and 1pm when judging will take place. At which time the room will be closed to the public and will reopen at about 3pm. All entries must remain in the show room until 4pm for viewing. The cost is only £1 for every 5 entries or part thereof. You may only enter one item per category but can enter all categories. Please fill this form in and bring it with you on the day.

Name .....

Please tick each category you wish to enter

	1	Victoria Sandwich (Jam only)		29	A Vase of Perennials
	2	3 Fruit Scones		30	1 Stem Dahlia
	3	Carrot Cake		31	An Orchid in a pot
	4	Lemon Drizzle Cake/Tray Bake		32	A Flowering Pot Plant
	5	4 Cup Cakes		33	A Foliage Pot Plant
	6	Fruit Cake (no decorations)		34	3 Cooking Apples
	7	3 Cheese Scones		35	3 Dessert Apples
	8	Chocolate Cake		36	5 Plums
	9	Short Bread		37	5 Blackberries
	10	Ginger Cake		38	A Plate of any Fruit
	11	5 Cheese Straws		39	3 Runner Beans
	12	Child under 6 a. colouring b. any craft		40	3 French Beans
	13	Child 6 to 8 a. drawing b. any craft		41	5 Potatoes
	14	Child 9 to 11 a. panting b. any craft		42	3 Carrots (tops trimmed)
	15	Child 11 and under 3 decorated Buns		43	1 Beetroot (top Trimmed)
	16	A Photograph of an Animal or Bird		44	3 Sticks of Rhubarb
	17	A Photograph of a Building		45	3 Onion Sets
	18	Any Other Craft		46	3 Leeks
	19	A Painting (any Medium)		47	3 Shallots
	20	A Hand Made Greetings Card		48	8 Cherry Tomato's
	21	A Hand Knitted Item		49	5 Tomato's
	22	A Crocheted Item		50	3 Leeks
	23	An Item of Needlework		51	3 Courgettes
	24	1 Stem Large Flowered Rose		52	3 Different Vegetables
	25	5 Rose Stems		53	Heaviest Marrow
	26	3 Dahlia Stems		54	Longest Runner Bean
	27	A Vase of Mixed Flowers		55	Odd Shaped Fruit or Veg
	28	A Vase of Annuals			

24 to 30 - Must be home grown (or allotment)

31 to 33 - Must have been owned by the exhibitor for at least 10 weeks

34 to 55 - Must be home grown (or allotment) with the exception of 37 which may be gathered from the wild

Competitors should bring their own vases. **The judge's decision is final.**