

# SELLINDGE VILLAGE NEWS

## September 2024

Edition 725



### INDOOR TABLETOP SALES – Sellindge Village Hall

9am to 1pm. **Sat September 7<sup>th</sup>** 9am to 1pm

Many stalls already booked a mix between household stalls and different crafts. Tables are £6 a 6-foot table.

Refreshments available to purchase. Parking and entry are free. Book/info contact Jeanette 07753 283 575.

Saturdays – Sellindge Village Hall 9am to 1pm.

– Oct 5<sup>th</sup> – Nov 2<sup>nd</sup> – Dec 7<sup>th</sup>



### SELLINDGE FARMERS & CRAFT MARKET in SELLINDGE VILLAGE HALL

Next Sellindge Farmers & Craft Market is

**Sunday September 15<sup>th</sup> Open** at 10am to 1pm.

Check out the Sellindge Farmers & Craft Market Face Book Page for more details.

### HI KENT – Reg Charity 1052036 [www.hikent.org.uk](http://www.hikent.org.uk)

*The local charity for people with a hearing loss*

Hi Kent provides FREE NHS hearing aid aftercare, advice and battery supply. The local hearing aid maintenance clinic will be in Coffee & Company in the Durling Hall, Sellindge Village Hall on –

**Tuesday September 10<sup>th</sup>** from 10.15am to 11.15am.

Other dates for 2024 **Oct 8<sup>th</sup> – Nov 12<sup>th</sup> – Dec 10<sup>th</sup>**



Sellindge Garage Safari, organised by 1st Sellindge Scout Group.

Time to sort out the loft and garage, clear out the cupboards and turn those unwanted items into cash.

Spaces available at the Hall for those living in the outlying areas of the village

Food, refreshments and paper maps available from the Village Hall

Cost of entry - £5 to be added to paper and google map, also shiny balloons to show off your house.

To book your property in contact:-

1stsellindgesg@gmail.com or phone / message

01303813250 / 07729374448

### SELLINDGE PARISH COUNCIL NOTICE



#### Neighbourhood Planning

Neighbourhood plans give communities direct power to develop a shared vision for their neighbourhood & shape the development & growth of their local area.

Sellindge Parish Council is starting to work on one now.

Soon there will be a meeting, where there will be a chance for all residents to get involved as would like your help to shape it.

**Look out for the date & please come if you can.**

Sellindge Parish Council  
Tel: 01303 813 271  
Website: [www.sellindge-pc.gov.uk](http://www.sellindge-pc.gov.uk)

### COMMUNITY SPEEDWATCH



With the support of Sellindge Parish Council we have seen the return of the Sellindge Community Speedwatch team.

This is having an impact and many residents are telling us that they are seeing a reduction of speed through the village, due to our presence, habits are now starting to change.

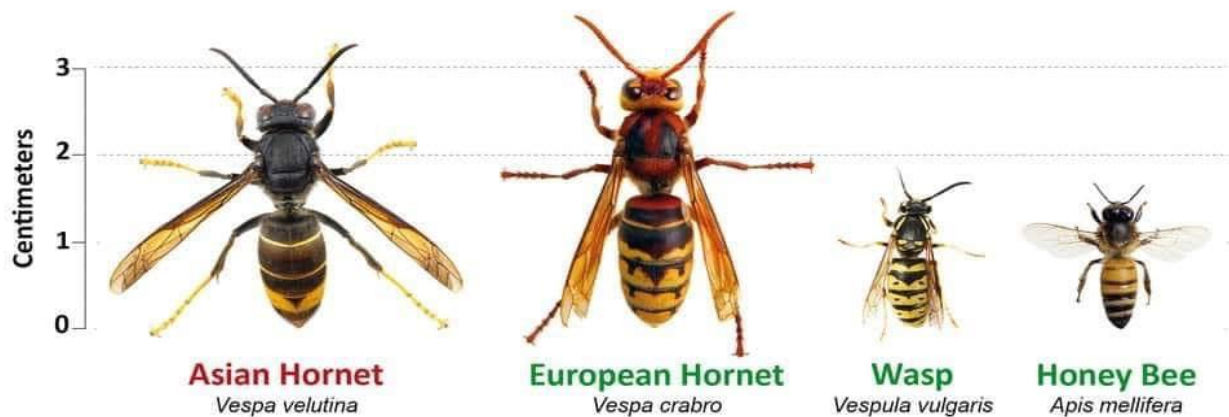
We often see mixed results, recent regular hotspots where we have visited a number of times are recording little or no speeding. However at another site we registered 12 drivers over the speed limit.

In conjunction with our efforts the Police have been conducting their own monitoring and this has been showing positive results.

**However we still need more volunteers, so if you have a spare hour in the month to come and join us, or would like to know a little more, contact the office on email: [admin@sellindge-pc.gov.uk](mailto:admin@sellindge-pc.gov.uk).**

Sellindge Parish Council Email: [admin@sellindge-pc.gov.uk](mailto:admin@sellindge-pc.gov.uk)  
Tel: 01303 813 271 Website: [www.sellindge-pc.gov.uk](http://www.sellindge-pc.gov.uk)

# Think you've seen an Asian Hornet? Report it!



Report through the Asian Hornet Watch app or [www.bit.ly/asianhornetreport](http://www.bit.ly/asianhornetreport)



## MOBILE LIBRARIES DATES and TIMES FOR SEPTEMBER 2024

[www.kent.gov.uk/leisure-and-community/libraries/visiting-a-library/mobile-libraries](http://www.kent.gov.uk/leisure-and-community/libraries/visiting-a-library/mobile-libraries)

Lay By on A20 at the bottom of Swan Lane.

**Thursdays** – 9.15am to 9.45am on **September 12<sup>th</sup> & 26<sup>th</sup>**

Lay by in Swan Lane at the entrance to Greenfields.

**Fridays** – 2.50pm to 3.20pm on **September 13<sup>th</sup> & 27<sup>th</sup>**



**SELLINDGE PC** [www.sellindge-pc.gov.uk](http://www.sellindge-pc.gov.uk) 01303 813 271 [clerk@sellindge-pc.gov.uk](mailto:clerk@sellindge-pc.gov.uk)

The next meeting of your Parish Council is on **Tuesday September 10<sup>th</sup>** starting at 6.30pm in the Durling Hall. There is also a pop in beforehand to raise any issues from 6pm.

**Dog Poo Bags** – Dog poo bags are still available from Nigel at Trust Cottages in Moorstock Lane, he puts them on a patio chair or table outside his house, as does Cllr Bull who places on the front garden wall, in Swan Lane if you phone him on his mobile 07710 260 751. Also available from Dog Poo Bag dispenser located at the Village Green Entrance.

## SELLINDGE WALKING GROUP

We meet at the Village Hall on a Tuesday morning at approximately 10.20am and set off at 10.30am.

We walk for 1 and 1/2 hours around the village using local footpaths. This does involve crossing fields and climbing over stiles so appropriate footwear is advisable.

We are no longer part of the NHS Walking for Health Scheme just a group of locals who enjoy walking. Everyone walks at their own risk.

## Sellindge Parish Council Notice

Due to circumstances beyond our control, the office may not be open for its usual hours.

However if you need anything please do contact via email on [clerk@sellindge-pc.gov.uk](mailto:clerk@sellindge-pc.gov.uk) or [admin@sellindge-pc.gov.uk](mailto:admin@sellindge-pc.gov.uk), where your enquiry will be answered as soon as possible.

**Home Upgrade Grant** Is your home heating electric, oil, LPG or solid fuel?  
You could be eligible for fully-funded home energy efficiency improvements

Time is running out for **FREE** energy-saving upgrades - register your interest by **30 September 2024**

If your home was cold last winter, you struggled to pay your bills. You might be eligible for a Home Upgrade Grant.

HUG2 is a Government grant scheme to fund energy-saving upgrades for residents with off-grid gas heating systems who are most likely to be impacted by the high cost of energy bills.



To find out more, join us at our coming energy events, scan the QR code



## F&HDC NORTH DOWNS WEST WARD – Cllr Jenny Hollingsbee (Conservative)

[jenny.hollingsbee@folkestone-hythe.gov.uk](mailto:jenny.hollingsbee@folkestone-hythe.gov.uk) Mobile 07887 918 458  @jennyhollingsbee

**Waste bin outside Village Hall** – FHDC are seeing if they can find a replacement bin.

**Folkestone Sports Centre** – The news that Folkestone Sports Centre has gone into administration is extremely disappointing. The previous Conservative Administration funded a Business Plan for the Centre but I understand none of the recommendations were implemented. It could not have been at a worse time of the year, just when School holidays were starting and the swimming pool would be in high demand. With Hythe Pool maintenance costs constantly increasing, let's hope that the loss of the Folkestone Sports Centre Swimming Pool will not leave us without a Pool for the District.

**My Community Voice** – A further reminder to sign-up to [Home Page - My Community Voice Kent](#) This is where you can find information on current scams locally and across Kent as well as other general information. For example, are you aware that Tamper Proof Screws for Vehicle Number Plates are available free of charge at Folkestone Police Station front counter. Folkestone front counter is open daily from 9am to 5pm, so go and get your screws!

**Sandgate Road Car Park** – Disabled motorists using the Sandgate Road Car Park can now register their vehicle for a quicker exit. Blue badge holders, eligible for three hours free parking, are being encouraged to register and upload a copy of their document [onto the council's Autobill platform](#). Once approved, blue badge holders will then be able to leave without the need to visit a parking terminal.

**Ashford Constituency MP** – Last week I met Sojan Joseph our new MP for the Ashford Constituency. I was able to discuss with him the Otterpool Park Garden Town Project and the impact that the loss of the winter fuel allowance will have on some vulnerable residents. I wait to hear an update on both issues.

**Sellindge Primary School** – wishing all new Reception pupils 'Good Luck' for the start of their education journey. Best Wishes also, for all pupils returning to School for the new academic year 2024-2025. Welcome to all new residents of the Village. If there is an issue, I can help you with, please contact me. I am happy to come to you or you are welcome to come to my house.

**Cllr Elaine Martin Contact:** (Green Party) [Elaine.Martin@folkestone-hythe.gov.uk](mailto:Elaine.Martin@folkestone-hythe.gov.uk)

A consultation is underway by Kent County Council until October 8th 2024 concerning its statutory Local Transport Plan. All the details of the draft Local Transport Plan and how to respond are on the KCC webpage at [www.kent.gov.uk/ltp5](http://www.kent.gov.uk/ltp5) The Local Transport Plan sets out KCC's priorities for transport investment in the County as whole and across the district. The Local Transport Plan will help our Council make the case to secure funding for these improvements over time.

Reach the Beach, the free summer bus service between Folkestone West Station and the Harbour Arm, has been hugely successful. The numbers expected were 1000 passengers per week but during the first two weeks almost 2000 passengers used the service each week. This number has continued to increase over the weeks it has been in service.

F&HDC have launched a new campaign called *Raise the Rate* which aims to improve the district's current recycling rate of 44.6% by encouraging residents to be extra careful about putting the right things in the correct bins. As part of the campaign an A-Z guide for recycling and waste page has been launched along with details for recycling and waste resources. See F&HDC's website for details

The Kent Wildlife Trust is no longer operating the Visitors Centre at the Romney Warren Nature Reserve. However, the nature reserve will remain open whilst the long-term future of the closed visitor centre and café are being decided. The Romney Warren Nature Reserve is a Site of Special Scientific Interest (SSSI), and although the buildings are currently closed, public access to the country park and trails with the free centre car park is still in use.

*Coffee & Company*

*At Sellindge Village  
Hall*

*Every Tuesday 9-1pm*

*All are Welcome to call  
in for a friendly chat  
and a cuppa*





**KCC COUNCILLOR** Susan Carey, Elham Valley Ward. [susan.carey@kent.gov.uk](mailto:susan.carey@kent.gov.uk) 01303 670 561

Thank you to those of you who took part in the consultation on KCC's 2025/26 budget. The results of this will help shape where savings are made and what should be prioritised. There are several other consultations still under way including the Transport Plan for Kent. You can take part through registering at Let's Talk Kent <https://letstalk.kent.gov.uk/>

Whilst we must wait till the October budget to see what the new government will fund and what it will not, there has already been one policy announcement about Adult Social Care funding. The government confirmed in *Fixing the Foundations* that it will not be proceeding with adult social care funding change that would have put a cap on care costs. This reform, which would have combined a cap of £86,000 on lifetime care costs with a more generous means test, was due to be implemented in October 2025. With so many of us living into frail old age, more families are being expected to meet care costs and it's a shame to see this attempt to share the burden more fairly is not going ahead as planned.

More people are eligible for free flu and COVID-19 vaccinations this autumn with invitations being sent out by the NHS soon. Kent County Council's Director of Public Health, Dr Ajan Ghosh, says: "We have long lived with the flu virus and are all learning to live with COVID-19. However, these viruses remain life-threatening for some – particularly for our most vulnerable residents, such as older people and individuals who have underlying medical conditions including heart disease and diabetes."

Those qualifying for the flu vaccination from 1 September 2024 are:

- all children aged 2 or 3 years on 31 August 2024
- primary school-aged children, from Reception to Year 6
- secondary school-aged children, from Year 7 to Year 11
- all children in clinical risk groups aged from 6 months to under 18 years
- pregnant women

Those qualifying for the flu vaccination from October 2024 include:

- adults aged 65 years and over
- those aged 18 years to under 65 years in clinical risk groups (as defined by the [Green Book, Influenza Chapter 19](#)). This includes pregnant women, individuals with chronic heart, kidney or liver disease, diabetes, or a weakened immune system (immunosuppression)
- those in long-stay residential care homes
- carers in receipt of carer's allowance, or those who are the main carer of an elderly or disabled person
- close contacts of immunocompromised individuals
- frontline workers in a social care setting without an employer-led occupational health scheme.

Those qualifying for the COVID-19 vaccination this Autumn are:

- adults aged 65 years and over
- residents in a care home for older adults
- individuals aged 6 months to 64 years in a clinical risk group ([as defined in tables 3 or 4 in the COVID-19 chapter of the Green Book](#)). Pregnant women are included in this clinical risk group
- frontline NHS and social care workers and those working in care homes for older people

Vaccines do wane in effectiveness so please keep your vaccinations up to date.

## THE SELLINDGE SPORTS & SOCIAL CLUB –

[www.sellindgesportsclub.co.uk](http://www.sellindgesportsclub.co.uk) 

**Thurs** Pizza nights, **Fri** Fish and Chips, takeaway & local delivery available.

Open 9am Saturdays and Sundays serving Breakfast Rolls & full menu.

**Monday – Crafty Crafters – 1.30pm to 3.30pm.**

**Tuesday – Whist Drive – 7pm**

**Wednesday – Pilates — 9.30am**

**Youth Club** for ages 11 to 16 from 5pm to 7pm – (Term time)

**Thursday – night BINGO 8pm**

### OPENING TIMES

Monday	3pm – 7pm
Tuesday	3pm – 9pm
Wednesday	3pm – 9pm
Thursday	3pm – 10pm
Friday	3pm – 11pm
Saturday	9am – 11pm
Sunday	9am – 6pm

**Closing times subject to change**



### Club Statement

Hi all – as I'm sure most of you have worked out, we have come to the end of the road of our footballing adventure – I can confirm we will not be continuing next season and Amanda and I are going back to being parents of a player rather than manager & club sec. It's been an absolute privilege to coach you over the last few years and I'm very proud of the confident young men you are all becoming. I'd like to say thank you to Amanda for all of her work, much of it behind the scenes which has been invaluable and also thank you to all the coaches who have assisted me over the years, Graeme, Darren, Wes, Russell – also a big thanks to anyone who has ever run the line – you've all been fantastic and a huge thanks to all of you parents/carers who take time out to get the boys there. Be very proud of what you have achieved in a few short years – a league title, semi-final of a cup and a tournament win – all unimaginable a few years back. Thank you all and I wish you every success in whatever you path you take – I hope you'll remember your times with the Swans fondly – see you all soon



**AFC Sellindge** – Play in the Ashford & District Sunday League – Division 2 – KO at 10.30am

**Sept 8<sup>th</sup>** Away V Saltwood AFC – KO at 10.30am

Please note that Sellindge Sports & Social Club is also the home ground for Saltwood AFC



**Sellindge Ladies Football Club** play on a Sunday afternoon at 2pm they compete in the Southeast Kent Women's League in Division two.

**Sept 8<sup>th</sup>** Away V Lydd Town. KO 2pm – **Sept 22<sup>nd</sup>** Home V Ramsgate. KO 2pm

**Sept 29<sup>th</sup>** Away V Folkestone Invicta. KO 2pm – **Oct 6<sup>th</sup>** Home V Mersham. KO 2pm

**Sellindge Ladies Football Club Under 9** play in the Ashford & District Youth League – Sats KO 10am

**Sept 7<sup>th</sup>** Away V Hawkinge KO 10am – **Sept 14<sup>th</sup>** Home V Hythe Town U9 Red KO 10am

**Sept 21<sup>st</sup>** Away V Ashford Utd U9 **9am\*** – **Sept 28<sup>th</sup>** Home V Lydd U9 Yellow KO 10am

**Oct 5<sup>th</sup>** Away V Hythe Town U9 Red KO 10am

**Sellindge Ladies Football Club Under 14 mixed** play Sundays in the

Kent Girls/Ladies League Division 3 KO 10am

**Sept 8<sup>th</sup>** Away V Orpington FC Broncos – **Sept 15<sup>th</sup>** Home V Anchorians Halos KO 10am

**Sept 29<sup>th</sup>** Away V Margate youth u14 Girls

### Club Late Summer Fun Show Results

Another successful Late Summer Fun Show, with a burst of late entries we had 41 competitors with an amazing 201 entries which is the second most entries in our 10 years of holding the event.

Best in cooking was Darryl Price.

Best Junior was Robyn Stanley.

Best Craft was Stephen Stanley

Best Flowers was Heidi Milner.

Best Fruit was Julie Andrews,

Best Vegetables was Robert Crux.

Best in Show went to Darryl Price for her very tasty Ginger Cake.

Thanks go to our very diligent Judges, Carol, Suzy, Christina, Marian, Gail and her team also many thanks to all the competitors who took the time to come along and enter, a great time was had by all.

So, let's hope more of you can make it next year.

## Village Hall Weekly Events

### MONDAY

<b>SUPERSTRIKERS</b>	9.30am -10.30am	<b>Main Hall</b> <a href="http://www.superstrikers.co.uk">www.superstrikers.co.uk</a>
<b>RAINBOWS</b>	4pm – 5pm	<b>Main Hall</b> - 01303 812 297 (Term time)
<b>BROWNIES</b>	5.15pm - 6.45pm	<b>Main Hall</b> - 01303 812 297 (Term time)
<b>LINE DANCING</b>	7.30pm – 9pm	<b>Main Hall</b> – 07753 274 913

### TUESDAY

<b>COFFEE &amp; COMPANY</b>	9am – 12.30pm	<b>Main Hall</b>
<b>MOTHER &amp; BABY GROUP</b>	1.30pm – 3pm	<b>Main Hall</b>
<b>LINE DANCING</b>	6pm – 7.30pm,	<b>Main Hall</b> – 07989 210 449

### WEDNESDAY

<b>BABY MASSAGE &amp; TUMMY TIME</b>	10am – 12.00 Noon	<b>Durling Hall</b>
<b>BEES BODS</b>	5.45pm – 6.45pm	<b>Main Hall</b> - 01303 813 274
<b>AEROBIC BODY BLAST</b>	7pm - 8pm	<b>Main Hall</b> - 01233 820 109
<b>LANGUAGE CLASSES</b>	6pm – 8pm	<b>Durling Hall</b>

### THURSDAY

<b>TINY TALK</b>	10am – 11am	<b>Durling Hall</b>
<b>PILATES</b>	9.30 – 10.45am	<b>Main Hall</b>
<b>LINE DANCING</b>	12 Noon – 1.30pm	<b>Main Hall</b> – 07989 210 449
<b>TAEKWONDO</b>	Various classes from 5.15pm	<b>Main Hall</b> – 01303 814 635

### FRIDAY

<b>RUGBY TOTS</b>	9.15am – 10.15am	<b>Main Hall</b>
<b>1<sup>st</sup> SELLINDGE SCOUT GROUP</b>	<b>CUBS</b> - 6 -7.30pm, <b>SCOUTS</b> - 7.30-9.00pm, 01303 813 250. <a href="mailto:1stsellindgesg@gmail.com">1stsellindgesg@gmail.com</a> (Term time)	<b>BEAVERS</b> - 6.00-7.15pm, <b>EXPLORERS</b> 7.30—9.00pm.

Both Halls

## Village Hall Monthly Events

### TUESDAY

<b>PARISH COUNCIL</b>	2nd Tuesday of the month at 6.30pm Parish Clerk 01303 813 271	<b>Durling Hall</b> –
-----------------------	--	-----------------------

### WEDNESDAY

### FRIDAY

<b>WEIGH and PLAY</b>	6 <sup>th</sup> & 20 <sup>th</sup> September	10am	<b>Durling Hall</b>
-----------------------	--	------	---------------------

### SATURDAY

<b>TABLETOP FAIR</b>	1 <sup>st</sup> Saturday of the month 9am – 1pm	<b>Main Hall</b>
----------------------	---	------------------

### SUNDAY

<b>FARMERS MARKET</b>	3 <sup>rd</sup> Sunday of the month 10am – 1pm	<b>Main Hall</b>
-----------------------	--	------------------



## Sellindge Village Hall

Halls available for hire.  
Meetings, Clubs, Parties,  
Wedding receptions etc

01303 813250 [sellindgevillagehall@gmail.com](mailto:sellindgevillagehall@gmail.com)



## Stour Downs Parish Brabourne, Mersham, Monks Horton, Sellindge, Smeeth & Stowting Churches

Rev Susan Manners (Interim Curate in Charge) 01233 500 414 [www.stourdowns.org.uk](http://www.stourdowns.org.uk) also on Facebook

### STOUR DOWNS PARISH Vicar's letter –

Last week I was licensed to the Stour Downs, which covers six villages including Sellindge as the Interim Curate in Charge for a period of twelve months. What is one of those? You might well ask!

You see when Chris left, I asked to stay here but the finances of the parish are such that we can't afford a vicar. So, I have been given the job for 12 months to see if during that time we can become financially viable hence the slightly odd title.

If not, in a year's time I will have to move. If that happens, there will be a long period without a vicar in this area.

Many of you probably think that the Church of England is wealthy and the Church Commissioners are extremely wealthy. You are not wrong but unfortunately this does not help our parish. Some parts of the Church of England are extremely wealthy, it depends which diocese you are in. Canterbury is the second poorest diocese after, I believe, Liverpool. The Church Commissioners are a statutory body similar to a government department who are responsible for clergy pensions but who don't give money to the parish.

Neither does the government give the church any money.

Each parish is self-funding. This means that we have to find enough money to cover all our costs which include insurance and maintenance of our medieval buildings, the costs of having a vicar and some support services provided by the diocese.

The idea of the Church of England is that it provides a church for every place in England and if you live in the parish you are entitled to baptism, weddings and funerals in the local church as well as pastoral support, support for our schools which means you'll find me in Sellindge school around once a fortnight doing school assembly.

We also run a coffee, cake and chat morning every Thursday from 10-12 in the church room behind the church to which all are welcome. We run our foodbank from this but it is for everyone to come and have a coffee and chat. For us to become financially viable we need your help! It is your village church if you want to keep it as a working church, I would like to ask you to give us your regular financial support however small (or large!) that is. You can give to individual churches using parish giving Online Visit [www.parishgiving.org.uk](http://www.parishgiving.org.uk) By phone 0333 002 1271 Please quote church code St Mary's Sellindge – 060606258 Thank you, any help you can give. Rev Susan



### Services in the Stour Downs

September 2024

	Smeeth 9:30am	Mersham 9:30am	Brabourne	Stowting	Monks Horton	Sellindge
<b>1<sup>st</sup> September</b> (14 <sup>th</sup> after Trinity)	<b>Parish Communion</b>	<b>Iona Service</b>	<b>11am Family Service Harvest Festival</b>		<b>6pm Evensong</b>	
<b>8<sup>th</sup> September</b> (15 <sup>th</sup> after trinity)	<b>Songs of Praise</b>	<b>Holy Communion</b>				
<b>15<sup>th</sup> September</b> (16 <sup>th</sup> after trinity)	<b>Parish Communion Harvest Festival</b>	<b>Morning Worship</b>	<b>11am Communion</b>			
<b>22<sup>nd</sup> September</b> (17 <sup>th</sup> after Trinity)	<b>Morning Worship</b>	<b>Parish Communion</b>		<b>11am Communion Harvest Festival</b>		
<b>29<sup>th</sup> September</b> <b>Harvest Festival</b> (18 <sup>th</sup> after Trinity)						<b>9:30am Harvest Communion</b>
<b>Wednesday</b>			<b>9:30am Midweek Parish Communion</b>			

*Disclaimer – The views are the views of those making the submissions and is not necessarily the views of the Editor or Parish Council*