

SELLINDGE VILLAGE NEWS

October 2024

Edition 726



HALLOWEEN BALL!
Saturday 26th October 2024
1.30pm - 3pm
Sellindge Village Hall
0 - 10 years old
Bouncy Castle, Music, Refreshments and Baby area.
Halloween Crafts
We'll have an extra special appearance from
MICKEY & MINNIE MOUSE
Glitter & Lipgloss by Guenda will be us aswell for Glitter Tattoos and Halloween designs.
£10 per child, Book Now
Don't forget to dress up

SELLINDGE PUMPKIN TRAIL
SIGN UP TO THE PUMPKIN TRAIL MAP & DECORATE YOUR HOME THIS HALLOWEEN
+ HALLOWEEN FANCY DRESS COMPETITION (KIDS)
JUDGING AT 6PM THURS 31ST OCT
@ NOTION COFFEE LOUNGE
(OPEN LATER FOR TAKEAWAY HOT DRINKS)
FOLLOW THE FACEBOOK GROUP FOR UPDATES

INDOOR TABLETOP SALES – Sellindge Village Hall 9am to 1pm. **Sat October 5th**

Many stalls already booked a mix between household stalls and different crafts. Tables are £6 a 6-foot table. Refreshments available to purchase. Parking and entry are free. Book/info contact Jeanette 07753 283 575.
Saturdays – Sellindge Village Hall 9am to 1pm. – **Nov 2nd – Dec 7th**



SELLINDGE FARMERS & CRAFT MARKET in SELLINDGE VILLAGE HALL

Next Sellindge Farmers & Craft Market is –

Sunday October 20th Open at 10am to 1pm.

Check out the Sellindge Farmers & Craft Market Face Book Page for more details.



NEIGHBOURHOOD PLAN

COMMUNITY ENGAGEMENT EVENT

SATURDAY 19TH OCTOBER

FROM 10AM

DURLING ROOM, VILLAGE HALL



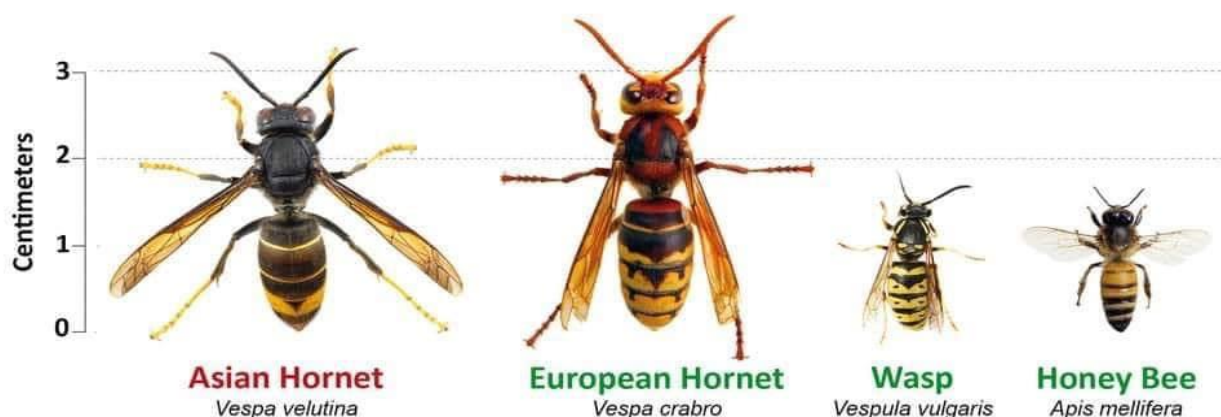
Neighbourhood plans can provide for new facilities, or allocate sites for housing, employment, recreation or wildlife. It may deal with a wide range of issues (such as environment, design, heritage and transport) or it may focus on one or two issues only.

We need Community engagement to make the plan a success – therefore we will be holding a number of events during the planning process to identify the views, aspirations, want and needs of local Sellindge residents.

Please help us by attending the first of these events.

Disclaimer – The views are the views of those making the submissions and is not necessarily the views of the Editor or Parish Council

Think you've seen an Asian Hornet? Report it!



Report through the Asian Hornet Watch app or www.bit.ly/asianhornetreport



Animal & Plant Health Agency

SELLINDGE PC www.sellindge-pc.gov.uk 01303 813 271 clerk@sellindge-pc.gov.uk

The next meeting of your Parish Council is on **Tuesday October 8th** starting at 6.30pm in the Durling Hall. From your Parish Council Clerk Linda Hedley

Dog Poo Bags – Dog poo bags are still available from Nigel at Trust Cottages in Moorstock Lane, he puts them on a patio chair or table outside his house, as does Cllr Bull who places on the front garden wall, in Swan Lane if you phone him on his mobile 07710 260 751.

Also available from Dog Poo Bag dispenser located at the Village Green Entrance.

MOBILE LIBRARIES DATES and TIMES FOR OCTOBER 2024

www.kent.gov.uk/leisure-and-community/libraries/visiting-a-library/mobile-libraries

Lay By on A20 at the bottom of Swan Lane.

Thursdays – 9.15am to 9.45am on **October 10th & 24th**

Lay by in Swan Lane at the entrance to Greenfields.

Fridays – 2.50pm to 3.20pm on **October 11th & 25th**



SELLINDGE WALKING GROUP

We meet at the Village Hall on a Tuesday morning at approximately 10.20am and set off at 10.30am. We walk for 1 and 1/2 hours around the village using local footpaths. This does involve crossing fields and climbing over stiles so appropriate footwear is advisable.

We are no longer part of the NHS Walking for Health Scheme just a group of locals who enjoy walking. Everyone walks at their own risk.

HI KENT – Reg Charity 1052036 www.hikent.org.uk

The local charity for people with a hearing loss

Hi Kent provides FREE NHS hearing aid aftercare, advice and battery supply. The local hearing aid maintenance clinic will be in Coffee & Company in the Durling Hall, Sellindge Village Hall on–

Tuesday October 8th from 10.15am to 11.15am. Other dates for 2024 – **Nov 12th – Dec 10th**

F&HDC NORTH DOWNS WEST WARD – Cllr Jenny Hollingsbee (Conservative)

jenny.hollingsbee@folkestone-hythe.gov.uk Mobile 07887 918 458  @jennyhollingsbee

Police & Crime Panel - as a member of the panel, I can put in a question for the PCC to answer at the next meeting. This must be on policy and not on operational issues and I would welcome positive suggestions from local residents for the next meeting in November.

Otterpool Park Garden Town – the Leader has published the following update “The Otterpool Park project continues at an intense pace. My thanks go to Susan Priest our Chief Executive, the Interim Director of Corporate Services and S151 Officer and Gary Ridgewell the Interim Managing Director of Otterpool LLP, for their enormous effort in managing the negotiations with Homes England, MHCLG and the Treasury. There is still a great deal of work going on to progress Otterpool Park and conclude these negotiations to begin the 21st Century New Town, but I genuinely think we are getting there! The team continue to meet with Homes England twice weekly, and we are in communication with the new Labour Government at a high level. We continue to update our two new MP’s for Otterpool Park, outlining the latest issues and opportunities.”

See Full Council Agenda and view webcast on Wednesday 2 October at 7 pm.

Housing targets – the new Government has announced an increase in housing targets for our District from 735 to 838 units per annum, an increase of 14%. Members recently received a briefing on the proposed planning reforms and a paper went to Cabinet on 25 September and again the webcast can be viewed

[Home - Folkestone & Hythe webcasting \(public-i.tv\)](#)

Annual Canvass – FHDC have just started the annual canvass, a statutory requirement, to ensure the electoral register is up-to-date. Residents will either receive an email about this or – if the council does not have your email address – a paper form through your letterbox. Households should read the instructions carefully as there may not be a need to respond. More information about the process can be [found on the council’s website](#).

My Community Voice – (Kent Police local Policing team) Book your Fraud Protect Presentation - The Fraud Prevent and Protect Officer is keen to give presentations to organisations and community groups on how to protect yourselves from the threat of Scams and avoid criminals stealing your money. These can be tailored for the needs and requirements of any group and can be booked for anytime in the future. If you are part of or in charge of any groups, including businesses that would benefit from this input, then please contact Stephen Kelly at

Stephen.kelly@kent.police.uk

Ticket Fraud Many of you may have been unsuccessful in obtaining tickets for next year’s Oasis concerts. It is important now if you are looking online for tickets being sold second hand that you do not end up "looking back in anger" from buying fake Oasis tickets. Criminals will see this as a wonderful opportunity to advertise fake tickets for sale via social media etc. Be vigilant, avoid clicking on suspicious links and only ever use authorised ticket agents to buy tickets. Further information on ticket fraud visit the Action fraud Website - Ticket fraud | Action Fraud.

Radnor Lodge Tea Room – FHDC is seeking offers from interested parties wanting to take on the Radnor Lodge tearoom in Folkestone. The lease contract allows trading from the tearoom between 9am and 7pm every day and permits the selling of hot (warmed through only) and cold food, non-alcoholic beverages, and ice cream (or any combination of these). Further information contact mhairi.richards@folkestone-hythe.gov.uk

Cllr Elaine Martin Contact: (Green Party) Elaine.Martin@folkestone-hythe.gov.uk

Southern Water, the Environment Agency, Kent County Council and the Romney Marsh Area of the Internal Drainage Board all sent representatives to this week’s Overview & Scrutiny Committee meeting. The district’s potential risk of inland flooding and the quality of the coastal bathing water were all discussed in detail. Councillors cross examined the work of each of these agencies. The intention of the meeting was to publicly shine a light on the problems of inland drainage and flooding risks and the pollution found on local beaches.

The next full District council meeting in October is to be held in New Romney, the first to be held outside Folkestone. The meeting will be held at The Marsh Academy, New Romney (TN28 8BB), at 7pm on Wednesday 2 October. Attendees will be able to meet some of the district council’s elected members before the meeting at from 6pm. The full council meeting will be broadcast live on [the council’s webcast channel](#) as usual.

The District is facilitating the Winter Well Event again this year. The Winter Well Event is being held on 27th November at South Kent Community Church, Castle Hill Avenue, Folkestone CT20 2QR between 10am and 1 pm. These events are a one stop shop morning providing advice, help from a range of agencies.

F&HDC are launching their annual canvas in October and November for 2024. This is a legal requirement to make sure the electoral register is accurate and up to date every year.

Please check and make sure your details are correct if you are contacted to do so.

KCC COUNCILLOR Susan Carey, Elham Valley Ward. susan.carey@kent.gov.uk 01303 670 561

Following the Government's decision to restrict the Winter Fuel Payment to those eligible for Pension Credit or other means tested benefits it may be worthwhile to check your eligibility for these. If you aren't eligible then you may still find there is support available via KentTogether.

You can find KentTogether at www.kent.gov.uk or ring 03000 41 92 92.

You may have seen news coverage of the government's consultation for reforms to the National Planning Policy Framework and other changes to the planning system. Housing targets have been raised in Kent to help meet the target of 1.5m homes to be built countrywide in the next 5 years. The methodology for setting these targets is not known and it has resulted in a large increase for Kent and a reduction for London. In our response to the consultation KCC is asking for this to be explained and justified. KCC is also raising concerns about mineral extraction and waste planning (for which KCC is responsible) and which is not covered in the new plans. Nature Recovery is also a missing topic and I've written many times about the work under way on this (see www.makingspacefornature.org.uk) KCC does however welcome the proposals to look at transport needs earlier in the process and to look at plans across a region rather than each district being looked at in isolation. Our response to the consultation raises concerns about infrastructure in Kent to support the new housing and questions about how realistic the targets are.

The much-postponed European Entry/Exit System (EES) is due to start on 10 November. All EU states need to be able to introduce EES at the same time so it's possible it may be postponed again but KCC is involved in the plans to have mitigation measures in place by 10 November. Eurotunnel has adapted its facilities to enable travellers to register on site but there are concerns about how the Port of Dover will cope on its constrained site. The Kent Resilience Forum which includes KCC, Kent Police, the District Councils, Kent Fire & Rescue, Kent Ambulance and others are working to mitigate the delays that are expected as travellers make their first registrations. A registration will last for 3 years which should ease the initial impact of EES. The whole of Kent suffers when we have cross-Channel disruption and Sellindge more than most and we need to do all we can to cope with this change.

KCC is proposing to build a Transfer Station near Junction 11 of the M20 for the waste collected kerbside in the Folkestone & Hythe District. At present the waste collected from our homes is taken to Ashford before being sorted and sent for recycling or to the Waste to Energy plant at Allington. The new site will reduce the need for such long journeys and should help provide a better service. See the plans on KCC website. Planning Application reference is KCC/FH/0115/2024 - Land adjacent to Ashford Road/A20 Westenhanger, Kent CT21 4HU. Alternatively contact me, I'll be happy to either answer or pass on any questions.

I attended the meeting of Sellindge Parish Council on 10 September and will continue to keep your Parish Council informed on these issues.

SELLINDGE VILLAGE HALL – YOUNG HEARTS

New Group starting in November from Young Hearts.

Infant development Play – More information in the November issue of the Sellindge Village News





Come and join us for our fantastic fireworks night, Saturday November 9th. Gates open 5pm Clubhouse 12 Noon. Tickets available in advance. £12 for Family ticket (these, only available if purchased in advance from Clubhouse). £4 per adult and £3 per child. Food and Drink available from the Clubhouse.

Monday – Crafty Crafters – 1.30pm to 3.30pm.

Tuesday – Whist Drive – 7pm

Wednesday – Pilates — 9.30am

Thursday – Youth Club for ages 11 to 16 from 5pm to 7pm – (Term time) **night BINGO 8pm**

Thurs Pizza nights, **Fri** Fish and Chips, takeaway & local delivery available.

Open 9am Saturdays and Sundays serving Breakfast Rolls & full menu.



AFC Sellindge – Play in the Ashford & District Sunday League – Division 2 – KO at 10.30am

Oct 6th Sherber Trophy game Home V Woodchurch – KO at 10.30am

Oct 13th Away V Fox Sunday – KO 10.30am



Sellindge Ladies Football Club play on a Sunday afternoon at 2pm they compete in the Southeast Kent Women's League in Division two.

Oct 6th Home V Mersham Sports Club. KO 2pm –

Oct 13th Away V Betteshanger Welfare. KO 2pm – **Oct 27th** Away V Hawkinge. KO 2pm

Nov 3rd Away V Herne Bay Development (Kent Divisional Cup)

Sellindge Ladies Football Club Under 9 play in the Ashford & District Youth League – Sats KO 10am

Oct 5th Away V Hythe Town U9 Red KO 10am – **Oct 19th** Home V South Ashford U9 10am

Oct 26th Home V Hawkinge Town UP Eagles KO 10am – **Nov 2nd** Away V Hythe Town U9 Blue

Sellindge Ladies Football Club Under 14 mixed play Sundays in the Kent Girls/Ladies League Division 3 KO 10am

Oct 20th Away V Long Lane JFC U14 girls KO 10am - **Oct 27th** Home V Canterbury Eagles u14 Girls

Nov 3rd Away V– Anchorians Hearts U14 Girls KO 10am



Village Hall Weekly Events

MONDAY

SUPERSTRIKERS	9.30am -10.30am	Main Hall www.superstrikers.co.uk
RAINBOWS	4pm – 5pm	Main Hall - 01303 812 297 (Term time)
BROWNIES	5.15pm - 6.45pm	Main Hall - 01303 812 297 (Term time)
LINE DANCING	7.30pm – 9pm	Main Hall – 07753 274 913

TUESDAY

COFFEE & COMPANY	9am – 12.30pm	Main Hall
MOTHER & BABY GROUP	1.30pm – 3pm	Main Hall
LINE DANCING	6pm – 7.30pm,	Main Hall – 07989 210 449

WEDNESDAY

BABY MASSAGE & TUMMY TIME	10am – 12.00 Noon	Durling Hall
BEES BODS	5.45pm – 6.45pm	Main Hall - 01303 813 274
AEROBIC BODY BLAST	7pm - 8pm	Main Hall - 01233 820 109
LANGUAGE CLASSES	6pm – 8pm	Durling Hall

THURSDAY

TINY TALK	10am – 11am	Durling Hall
PILATES	9.30 – 10.45am	Main Hall
TAEKWONDO	Various classes from 5.15pm	Main Hall – 01303 814 635

FRIDAY

RUGBY TOTS	9.15am – 10.15am	Main Hall
1 st SELLINDGE SCOUT GROUP	CUBS - 6 -7.30pm, SCOUTS - 7.30-9.00pm, 01303 813 250. 1stsellindgesg@gmail.com (Term time)	BEAVERS - 6.00-7.15pm, EXPLORERS 7.30—9.00pm.

Both Halls

Village Hall Monthly Events

TUESDAY

PARISH COUNCIL	2nd Tuesday of the month at 6.30pm Parish Clerk 01303 813 271	Durling Hall –
----------------	--	----------------

WEDNESDAY

GET TOGETHER CLUB	2 nd Wednesday of the month 2pm – 4pm	Durling Hall
-------------------	--	--------------

SATURDAY

TABLETOP FAIR	1 st Saturday of the month 9am – 1pm	Main Hall
---------------	---	-----------

SUNDAY

FARMERS MARKET	3 rd Sunday of the month 10am – 1pm	Main Hall
----------------	--	-----------



sellindge Village Hall

Halls available for hire.
Meetings, Clubs, Parties,
Wedding receptions etc

01303 813250 sellindgevillagehall@gmail.com



Stour Downs Parish Brabourne, Mersham, Monks Horton, Sellindge, Smeeth & Stowting Churches

Rev Susan Manners (Interim Curate in Charge) 01233 500 414 www.stourdowns.org.uk also on Facebook

STOUR DOWNS PARISH Vicar's letter –

In our churches we are working to improve our impact on the world around us and be good stewards of God's creation. Part of this is being involved in something called the Eco Church awards. Smeeth, Mersham and Brabourne have achieved Eco-church awards. Smeeth and Mersham received the silver award and Brabourne received its bronze award in September.

We are now looking to do this in Sellindge Church.

The aim of the Eco Church awards is to support churches in taking practical action to care for God's earth in our part of the world. To achieve an award, it requires you to meet standards in five areas. Worship and Teaching, Building Management, Land Management, Community and Global Engagement, and Lifestyle.

What does this involve?

Worship and Teaching – Embedding creation care in worship, prayer and learning within the church.

Building Management – Involves finding energy efficient and innovative ways to manage our places of worship which is not easy with medieval buildings. Things like LED lighting and having composting toilets in Brabourne church. We also twin our toilets which means funding a project in a community that helps families to build their own basic toilet, access clean water and learn about hygiene.

Land Management – Is about nurturing spaces for people and nature and we work hard to look after our churchyards to make them pleasant places to take a break and have a bit of peace and quiet with benches to sit on, but also ensuring we make space for wildlife and wildflowers.

Community and Global Engagement – Means that we try to help people engage with environmental issues and at a basic level wherever possible, Fairtrade and / or ethically sourced goods are used at church services and events.

Lifestyle – We all know that we need to look after the planet, and we are responsible for ensuring it is in a good state for the generations to come. It is part of our Christian faith and so it means thinking about the way we live and trying to be as sustainable as possible both as a church and as individuals.

The whole point of the Eco Church awards is that it gives us a framework for action to ensure we continue working to improve in this area. Could you help with this?

Rev Susan



Services in the Stour Downs October 2024

	Smeeth 9:30am	Mersham 9:30am	Brabourne	Stowting	Monks Horton	Sellindge
6th October (19 th after Trinity)	Parish Communion	Morning Worship Harvest	10am Family Service		6pm Evensong Harvest	
13th October (20 th after trinity)	Morning Praise	Parish Communion				
20th October (21 st after trinity)	Parish Communion	Morning Worship	11am Communion			
27th October (Last Sunday after Trinity)	Morning Praise	Parish Communion		11am Communion		
Wednesday			9:30am Midweek Parish Communion			