

# SELLINDGE VILLAGE NEWS

## November 2024

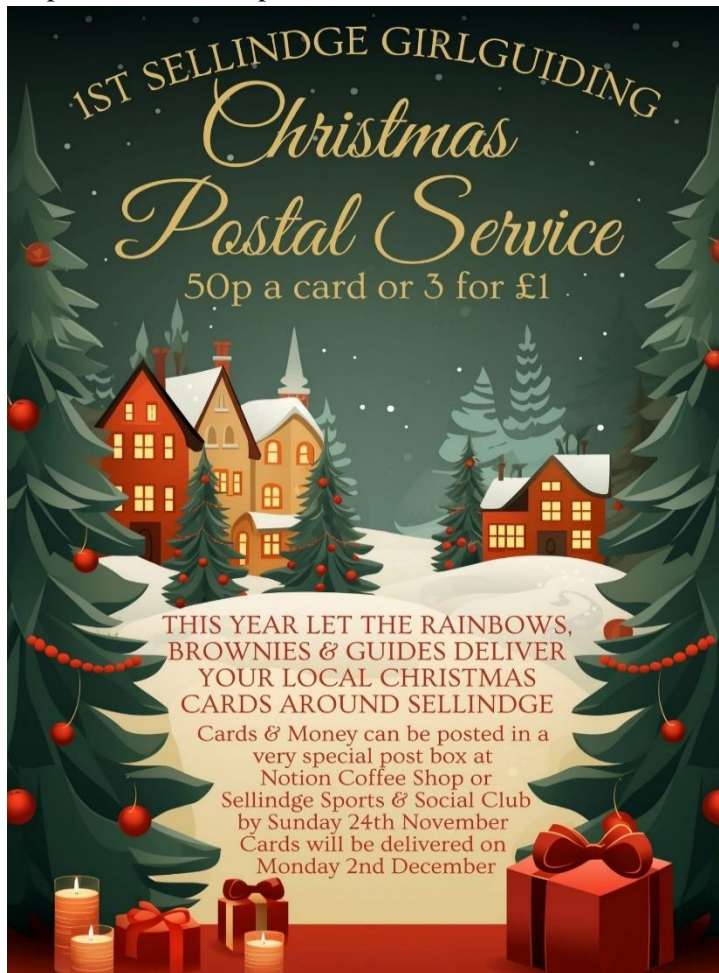
Edition 727



SELLINDGE SPORTS AND SOCIAL CLUB - [www.sellindgesportsclub.co.uk](http://www.sellindgesportsclub.co.uk) 



Come and join us for our fantastic fireworks night, **Saturday November 9<sup>th</sup>**. Gates open 5pm Clubhouse 12 Noon. Tickets available in advance. £12 for Family ticket (these, only available if purchased in advance from Clubhouse). £4 per adult and £3 per child. Food and Drink available from the Clubhouse.



**SELLINDGE FARMERS & CRAFT MARKET in SELLINDGE VILLAGE HALL**

Next Sellindge Farmers & Craft Market is – **Sunday November 17<sup>th</sup> Open** at 10am to 1pm.

Check out the Sellindge Farmers & Craft Market Face Book Page for more details.

*Disclaimer – The views are the views of those making the submissions and is not necessarily the views of the Editor or Parish Council*

**INDOOR TABLETOP SALES – Sellindge Village Hall 9am to 1pm. Sat November 2<sup>nd</sup>**

Many stalls already booked a mix between household stalls and different crafts. Tables are £6 a 6-foot table. Refreshments available to purchase. Parking and entry are free.

To Book/info contact Jeanette 07753 283 575.

Saturdays – Sellindge Village Hall 9am to 1pm.



## SELLINDGE COMMUNITY

### SPEEDWATCH TEAM

With the ongoing support of the Sellindge Parish Council the Community Speedwatch team are continuing to have an impact. Many residents are telling us that they are seeing a reduction of speed through the village due to our persistence and habits are hopefully now starting to change.

Although we see mixed results in regular spots we monitor we are trying to change locations as much as we can as well as timings especially with the darker nights. Just over two weeks saw us report 66 vehicles over the limit. However in order to change and vary times around we still need more volunteers to help with this, so even an odd hour you have spare in a month to come and join us will help.

If you would like to know a little more contact the office e-mail  
[admin@sellindge-pc.gov.uk](mailto:admin@sellindge-pc.gov.uk)



**SELLINDGE PC** [www.sellindge-pc.gov.uk](http://www.sellindge-pc.gov.uk)  
01303 813 271 [clerk@sellindge-pc.gov.uk](mailto:clerk@sellindge-pc.gov.uk)

The next meeting of your Parish Council is **Tuesday November 12<sup>th</sup>** starting at 6.30pm in the Durling Hall. From your Parish Council Clerk Linda Hedley **Dog Poo Bags** – Dog poo bags are still available from Nigel at Trust Cottages in Moorstock Lane, he puts them on a patio chair or table outside his house, as does Cllr Bull who places on the front garden wall, in Swan Lane if you phone him on his mobile 07710 260 751. Also available from Dog Poo Bag dispenser located at the Main Village Green Entrance.

### Sellindge Neighbourhood Plan 2025-2040

Sellindge Parish Council has started work on a Neighbourhood Plan for the period 2025-2040. The idea of the Neighbourhood Plan is to put in place a strategy and policies for the future of Sellindge.

Neighbourhood plans can provide for new facilities, or allocate sites for housing, employment, recreation or wildlife. They may deal with a wide range of issues

such as environment, design, heritage and transport. The first Community engagement event was held on 19th October and the process of engaging a steering committee from residents, as well as councillors has begun. The target is to have a draft plan by the end of March 2025.



**The Rural and Community  
Housing Enabling Service**

A **Local Housing Needs Survey** has also been posted to all residents of Sellindge, with part 1 being for all residents to respond to and part 2 for residents of any age who is in need of affordable housing and the responses from this will also be incorporated in the Neighbourhood Plan going forward.

If you did not receive a survey card and wish to do the survey online follow this link <https://online1.snapsurveys.com/sellindge> or would like a card or a paper copy, pick one up from the Parish Council Office, Primary School. **Please respond to the survey by December 4th 2024.** The finding of the survey will be published on the Parish Council website.

Community engagement is key to making the plan a success and there will be more events to identify the views, aspirations, wants and needs of Sellindge residents.

## SELLINDGE NEIGHBOURHOOD PLAN 2025-2040

### STEERING GROUP MEETING

**Wednesday 6th November 12 noon in the Village Hall**

Following on from the Community event held on 19th October, Sellindge Parish Council are continuing the work on the Neighbourhood plan in order to put in place strategies and policies for the future of the village.

Neighbourhood plans help with provision of new facilities, allocate sites for housing, employment, recreation or wildlife needs. It may also deal with a wide range of issues such as environment, design, heritage and transport.

The next step is with your continued help and engagement is through a steering committee and a series of meetings so as we can complete the plan by March 2025.

So please if you would like to get involved the first of these steering meetings is to be held at 12noon at the Village hall on Wednesday 6th November.

We do need your help Community engagement to make the plan a success, so I hope you can come along.

If this meeting time is not good for you but you want to get involved, please do email [admin@sellindge-pc.gov.uk](mailto:admin@sellindge-pc.gov.uk) as we will look to change meeting times to accommodate for as many as we can who want to be involved.

**Please come along and support the events when they happen.**



## MOBILE LIBRARIES DATES and TIMES FOR NOVEMBER 2024

[www.kent.gov.uk/leisure-and-community/libraries/visiting-a-library/mobile-libraries](http://www.kent.gov.uk/leisure-and-community/libraries/visiting-a-library/mobile-libraries)

Lay By on A20 at the bottom of Swan Lane.

**Thursdays** – 9.15am to 9.45am on **November 7<sup>th</sup> & 21<sup>st</sup>**

**Fridays** – 2.50pm to 3.20pm on **November 8<sup>th</sup> & 22<sup>nd</sup>**

St Kathrines Crescent TN25 6FU. *No info as to where on St*

*Kathrines Crescent, will endeavour to Locate on Friday November 8<sup>th</sup> (Nigel).*



**Kent Libraries**

**HI KENT – Reg Charity 1052036** [www.hikent.org.uk](http://www.hikent.org.uk)

*The local charity for people with a hearing loss*

Hi Kent provides FREE NHS hearing aid aftercare, advice and battery supply. The local hearing aid maintenance clinic will be in Coffee & Company in the Durling Hall, Sellindge Village Hall on–

**Tuesday November 12<sup>th</sup>** from 10.15am to 11.15am. Other dates for 2024 – – **December 10<sup>th</sup>**

**F&HDC NORTH DOWNS WEST WARD – Cllr Jenny Hollingsbee (Conservative)**

[jenny.hollingsbee@folkestone-hythe.gov.uk](mailto:jenny.hollingsbee@folkestone-hythe.gov.uk) Mobile 07887 918 458  @jennyhollingsbe

**Winter Fuel Allowance** – In July 2024, the government announced that the Winter Fuel Payment will become a means-tested benefit, so around 10 million people will now lose out on this payment. You will only get Winter Fuel Allowance automatically if you receive [Pension Credit](#) or another social security benefit. At the Full Council Meeting, held at The Marsh Academy, on Wednesday 4 October, I put forward a motion that included writing to the Chancellor to ask her to reconsider the decision to withdraw the Winter Fuel Allowance for all Pensioners. Unfortunately, the opposition voted against the motion, instead opting to work with KCC in respect of the Household Support Fund which is funding from Government to support the most vulnerable. In our District there are 24,497 pensioners who will lose this winter fuel allowance.

**Otterpool Park** – Negotiations continue to take place with Homes England but they are ‘dragging’ their feet. A working group has been set-up within the Council to consider the options being discussed with Homes England and also looking into other possibilities.

**Call for sites** – the District Council has just issued a ‘call for sites’ press release. It is an opportunity for residents, Parish Councils, landowners, developers and other stakeholders to suggest land – with the potential for future development – for a wide range of uses. These include housing, employment, leisure, community, open space or areas set aside for nature. This is the first stage of a new Local Plan and residents will be consulted throughout the process – watch this space!

**Police & Crime Commissioner** – Kent’s PCC is writing his new Police and Crime Plan which sets the Chief Constables priorities. His plan is to cut crime, support victims and build trust. He wants to know what you think and what your experience of crime is. He has launched an anonymous survey for residents to have their say – see [www.kent-pcc.gov.uk](http://www.kent-pcc.gov.uk)

In October I attended the Sports & Social Club meeting and visited the Primary School.

## SELLINDGE VILLAGE HALL – YOUNG HEARTS – NEW GROUPS



Mini Milestones

Sensory Play

**PLAY GYM**  
**0-6 MONTHS**

Sellindge Village Hall  
Wednesdays 1-2pm  
Starts 6th November  
£50 for the full term

Development

Play Diet



**PLAY GYM**  
**6-12 MONTHS**

Mini Milestones

Sensory

THURSDAYS, 12 - 1PM

Sellindge Village Hall  
Starts Thursday 7th November  
£50 for the full term

Development

Play Diet



**MINI MOVERS**  
**12+ MONTHS**

STARTS THURSDAY 7TH NOVEMBER

Sellindge Village Hall  
1.30pm - 2.30pm  
£50 for the full term

## **F&HDC NORTH DOWNS WEST WARD –**

**Cllr Elaine Martin Contact:** (Green Party) [Elaine.Martin@folkestone-hythe.gov.uk](mailto:Elaine.Martin@folkestone-hythe.gov.uk)

As I am sure you will have heard, the Government is stopping the Winter Fuel Payment for any pensioner who is not in receipt of Pension Credit. Can I urge you to check if you can apply for Pension Credit and that will give you access to the £300 payment. If you are a pensioner and are on a low income you may be eligible. The application form is available on the Council's website and friends and families can help by checking with relatives and helping with filling in the application form.

The deadline for applying and being able to receive the Winter Fuel Payment is 21 December 2024.

The consultation on the corporate plan has been completed, with 550 responses received.

This is an amazing response rate as these things go, so many thanks if you returned the online questionnaire.

F&HDC have launched the Call for Sites exercise which started on the 7th October and runs for 6 weeks, closing on the 18th November 2024. It invites suggestions to be submitted by landowners, planning agents, public bodies, town and parish councils, local community groups and individuals to the planning department. The sites could have several uses, including community uses and sites for green infrastructure.

For the first time the October meeting of the full District council was successfully held outside of Folkestone at The Marsh Academy, New Romney. It is hoped that the full District Council meeting will continue to move around the District to encourage more members of the public to attend.

The F&HDC Asset and Social Housing Decarbonisation staff won the Asset Management category award at the recent Kent Housing Group Excellence Awards. The work carried out is already making a difference for tenants who are seeing their bills reduce and their homes warmer. The work has also reduced the tenants carbon emissions which benefits us all.

**KCC COUNCILLOR** Susan Carey, Elham Valley Ward. [susan.carey@kent.gov.uk](mailto:susan.carey@kent.gov.uk) 01303 670 561

Some good news. The much-postponed introduction of the European Entry Exit (EES) by EU states has once more been postponed. It was due to be introduced on 10 November and involves registering biometric information in order to enter or leave an EU state. However, several EU states including France have said they are not yet ready. The delay is an opportunity for the EU and the UK Government to put in place appropriate technology to allow people to register in advance of their travel. Without this provision it is anticipated there would be considerable delays at the ports as people register for the first time. It's only necessary to register once every three years so once most travellers are used to the new system there should be less impact on Kent's road network. As yet, there is no revised date but KCC is continuing to lobby for remote registration as it's believed EES will be introduced at some point next year.

Some bad news. There's also a delay to the Lower Thames Crossing which is the long-planned road tunnel from Kent to Essex. The new Government has said that a decision on this major infrastructure project will not now be made before May 2025. This is disappointing as one of the reasons our roads in Kent become overwhelmed is that most of the cross-Channel traffic is funnelled down the M20. Much of the cross-Channel traffic (particularly the freight traffic) is headed to/from the Midlands and the Lower Thames Crossing would be a more direct route thus relieving congestion in East Kent, the M25 and Dartford. It's a desperately needed project and one that KCC has long supported.

Solar panels and battery storage have become increasingly desirable as energy prices rise and people look for ways to reduce both their energy bills and carbon emissions. KCC is working with Solar Together to bring together residents interested in solar power with reputable manufacturers and installers in a group buying scheme (you get a discount for bulk buying and the manufacturers and installers get a guaranteed pipeline of work). There are hundreds of households in Kent that have already taken part. You can get a no obligation quote for panels and/or batteries so if you've been thinking about installing solar look on the KCC website and add Solar Together to your list of quotes.

For those simply concerned about meeting their winter fuel bills do see what support may be available to you. The KCC website [www.kent.gov.uk](http://www.kent.gov.uk) is a good place to start or you can ring 03000 41 92 92.

The KCC Public Health Team is joining with the NHS to encourage all those eligible to take up the vaccinations they are offered this autumn. Covid is still with us and flu is always a risk in the winter.

New for this year is the RSV vaccine for those between 75 and 79 years old which helps protect against respiratory syncytial virus. There are a number of KCC consultations under way including education strategies and support services for children and you can take part at <https://letstalk.kent.gov.uk/>

## LYMPNE + SELLINDGE TABLE TENNIS CLUB

We are a long-standing table tennis club which has recently relocated to Sellindge Village Hall.

The club meets every Wednesday afternoon between 2pm and 4pm.

We are a mature group who play competitive games, but do not participate in leagues.

Members are a friendly and social group.

New members are welcome along to see if our club suits your needs. Serious play; friendly outcomes.

Come along and see at Sellindge Village Hall.

**SELLINDGE SPORTS AND SOCIAL CLUB** - [www.sellindgesportsclub.co.uk](http://www.sellindgesportsclub.co.uk) 



Come and join us for our fantastic fireworks night, Saturday November 9<sup>th</sup>. Gates open 5pm Clubhouse 12 Noon.

Tickets available in advance. £12 for Family ticket (these, only available if purchased in advance from Clubhouse).

£4 per adult and £3 per child. Food and Drink available from the Clubhouse.

**Monday – Crafty Crafters – 1.30pm to 3.30pm.**

**Tuesday – Whist Drive – 7pm**

**Wednesday – Pilates — 9.30am**

**Thursday – BINGO 8pm**

**Thurs** Pizza nights, **Fri** Fish and Chips, takeaway & local delivery available.

Open 9am Saturdays and Sundays

serving Breakfast Rolls & full menu.



**AFC Sellindge** – Play in the Ashford & District Sunday League Division 2 10.30am

**Nov 3<sup>rd</sup>** Away V Bromley Green –

**Nov 10<sup>th</sup>** Home V Shadoxhurst

**Nov 17<sup>th</sup>** Home V Folkestone Utd reserves  
Kent Sunday Junior Trophy.



**Sellindge Ladies Football Club** play on a Sunday afternoon at 2pm they compete in the Southeast Kent Women's League in Division two.

**Nov 3<sup>rd</sup>** Away V Herne Bay Development (Kent Divisional Cup)

**Nov 10<sup>th</sup>** Home V Baypoint Seconds – **Nov 17<sup>th</sup>** Away V Aylesford 2d's Kent Womens Plate

**Nov 24<sup>th</sup>** Home V Lydd Town. 2pm – **Dec 1<sup>st</sup>** Home V Ramsgate (Kent Divisional Cup)

**Sellindge Ladies Football Club Under 9** play in the Ashford & District Youth League – Sats KO 10am

**Nov 2<sup>nd</sup>** Away V Hythe Town U9 Red – **Nov 9<sup>th</sup>** Home V Ashford U9 10am

**Nov 16<sup>th</sup>** Away V Lydd u9 KO 10am – **Nov 23<sup>rd</sup>** Home V Hythe Town U9 Red

**Sellindge Ladies Football Club Under 14 mixed** play Sundays in the Kent Girls/Ladies League Division 3 KO 10am

**Nov 3<sup>rd</sup>** Away V– Anchorians Hearts U14 Girls KO 10am

**Nov 20<sup>th</sup>** Away V Otford Utd 10am U14 League Cup - **Dec 1<sup>st</sup>** Away V Anchorians Halo 10am



## Village Hall Weekly Events

### MONDAY

SUPERSTRIKERS	9.30am -10.30am	Main Hall <a href="http://www.superstrikers.co.uk">www.superstrikers.co.uk</a>
RAINBOWS	4pm – 5pm	Main Hall - 01303 812 297 (Term time)
BROWNIES	5.15pm - 6.45pm	Main Hall - 01303 812 297 (Term time)
LINE DANCING	7.30pm – 9pm	Main Hall – 07753 274 913

### TUESDAY

COFFEE & COMPANY	9am – 12.30pm	Main Hall
MOTHER & BABY GROUP	1.30pm – 3pm	Main Hall
LINE DANCING	6pm – 7.30pm,	Main Hall – 07989 210 449

### WEDNESDAY

BABY MASSAGE & TUMMY TIME	10am – 12.00 Noon	Durling Hall
PLAY GYM 0 – 6 months	1pm – 2pm	Durling Hall <b>**NEW**</b>
L+S TABLE TENNIS		Main Hall <b>**NEW**</b>
BEES BODS	5.45pm – 6.45pm	Main Hall - 01303 813 274
AEROBIC BODY BLAST	7pm - 8pm	Main Hall - 01233 820 109
LANGUAGE CLASSES	6pm – 8pm	Durling Hall

### THURSDAY

TINY TALK	10am – 11am	Durling Hall
PILATES	9.30 – 10.45am	Main Hall
PLAY GYM 6 – 12 months	12 Noon – 1pm	Main Hall <b>**NEW**</b>
PLAY GYM 12 months +	1.30pm – 2.30pm	Main Hall <b>**NEW**</b>
TAEKWONDO	Various classes from 5.15pm	Main Hall – 01303 814 635

### FRIDAY

RUGBY TOTS	9.15am – 10.15am	Main Hall
1 <sup>st</sup> SELLINDGE SCOUT GROUP	CUBS - 6 -7.30pm, SCOUTS - 7.30-9.00pm, 01303 813 250. <a href="mailto:1stsellindgesg@gmail.com">1stsellindgesg@gmail.com</a> (Term time)	BEAVERS - 6.00-7.15pm, EXPLORERS 7.30—9.00pm.

Both Halls

## Village Hall Monthly Events

### TUESDAY

PARISH COUNCIL 2nd Tuesday of the month at 6.30pm Durling Hall – Parish Clerk 01303 813 271

### WEDNESDAY

GET TOGETHER CLUB 2<sup>nd</sup> Wednesday of the month 2pm – 4pm Durling Hall

### SATURDAY

TABLETOP FAIR 1<sup>st</sup> Saturday of the month 9am – 1pm Main Hall

### SUNDAY

FARMERS MARKET 3<sup>rd</sup> Sunday of the month 10am – 1pm Main Hall



## sellindge Village Hall

Halls available for hire.  
Meetings, Clubs, Parties,  
Wedding receptions etc

01303 813250 [sellindgevillagehall@gmail.com](mailto:sellindgevillagehall@gmail.com)



## Stour Downs Parish Brabourne, Mersham, Monks Horton, Sellindge, Smeeth & Stowting Churches

Rev Susan Manners (Interim Curate in Charge) 01233 500 414 [www.stourdowns.org.uk](http://www.stourdowns.org.uk) also on Facebook

### STOUR DOWNS PARISH Vicar's letter –

November can be a difficult month for many of us. As the clocks change, the nights draw in and the weather gets colder it is easy for us to turn inwards and become insular. To stay in our homes where it is warm (hopefully) and to spend less time outside. It is a time when loneliness can become more and more difficult. Jesus told us to love our neighbour as ourselves. That means looking out for them, checking in on people and offering a helping hand to those in need. As a church we try to do this through our Thursday coffee and cake in the church room which is a good way to have a chat and meet some new people.

We also do pastoral care visits and for those in need of a bit of extra help we run our own foodbank.

November is also a time of remembering. At the beginning of the month the church remembers those who have died at All Saints and All Souls. Smeeth Church will have a service of Light on 3<sup>rd</sup> November at 3pm for anyone who wishes to come and remember a loved one, to light a candle and have their name read out. If you would like to come along you would be very welcome and if you aren't going to be there but would like someone's name read out do let us know.

On 10<sup>th</sup> November we will have our Remembrance Sunday services at both Smeeth and Mersham. Both will begin at 10:45 and the Smeeth service will have the Royal British Legion and the uniformed organisations joining us as we remember all those who laid down their lives so that we may live. This year in particular, we will be remembering the 80<sup>th</sup> anniversary of the D-Day Landings.

You are very welcome at this or any of our services, events and activities. Don't forget at the end of the month we will have the Brabourne Friends Christmas Fayre and the Mersham Christmas Tree Festival. We welcome any group, society, individual or school to decorate a tree for the Christmas Tree Festival. Alternatively, just come along and enjoy the show there will be soup lunches and lots of cake to enjoy.

With every blessing, Rev Susan

### Services in the Stour Downs November 2024

	Smeeth 9:30am	Mersham 9:30am	Brabourne	Stowting	Monks Horton	Sellindge
<b>3<sup>rd</sup> November</b> (All Saints)	<b>Parish Communion</b>  <b>3pm Service of Light – Remembering the Departed</b>	<b>Morning Worship Harvest</b>	<b>10am Family Service</b>		<b>6pm Evensong</b>	
<b>10<sup>th</sup> November</b> (Remembrance)	<b>8am Holy Communion</b> <b>10:45am Remembrance</b>	<b>10:45 Remembrance</b>				
<b>17<sup>th</sup> November</b> (2 <sup>nd</sup> before Advent)	<b>Parish Communion</b>	<b>Morning Worship</b>	<b>11am Communion</b>			
<b>24<sup>th</sup> November</b> (Christ the King)	<b>Morning Praise</b>	<b>Parish Communion</b>		<b>11am Communion</b>		
<b>Wednesday</b>			<b>9:30am Midweek Parish Communion</b>			